



AFRICA BIODIVERSITY COLLABORATIVE GROUP

October 24, 2017

Mission

To advance understanding of critical biodiversity conservation challenges and their solutions in sub-Saharan Africa



AFRICA BIODIVERSITY COLLABORATIVE GROUP

Current Phase

- ABCG II cooperative agreement, Oct 2015-Sept 2018
- 5 million over 3 years
- Emphasis on capacity development of African institutions
- Nairobi-based Communications and Engagement Officer
- WCS hosts the Secretariat, housing full-time ABCG staff



AFRICA BIODIVERSITY COLLABORATIVE GROUP

Objectives

1. **Prioritize** biodiversity conservation in international development agendas
2. **Promote** best practices for conservation among practitioners
3. **Partner** with social and development institutions, including African institutions and civil society, to build capacity for biodiversity conservation



AFRICA BIODIVERSITY COLLABORATIVE GROUP

Approach

1. Identify and prioritize emerging and high-priority conservation issues affecting sub-Saharan Africa;
2. Foster technical and information exchange through partnerships with African institutions and civil society, to design and test innovative approaches and build communities of practice, and;
3. Synthesize collective lessons from field activities and share them with a broader multi-sector community in the US and Africa for data-driven decision making and policy integration.



AFRICA BIODIVERSITY COLLABORATIVE GROUP

Thematic Activity Areas

1. Land and Resource Tenure Rights
2. Land Use Management
3. Managing Global Change Impacts on Biodiversity
4. Global Health Linkages to Biodiversity Conservation
5. Emerging Issues



AFRICA BIODIVERSITY COLLABORATIVE GROUP

Connect

ABC G website: www.abcg.org

- Join our listserv

Twitter: @ABC Gconserve

Facebook: www.facebook.com/ABC Gconserve

LinkedIn: www.linkedin.com/company/africa-biodiversity-collaborative-group



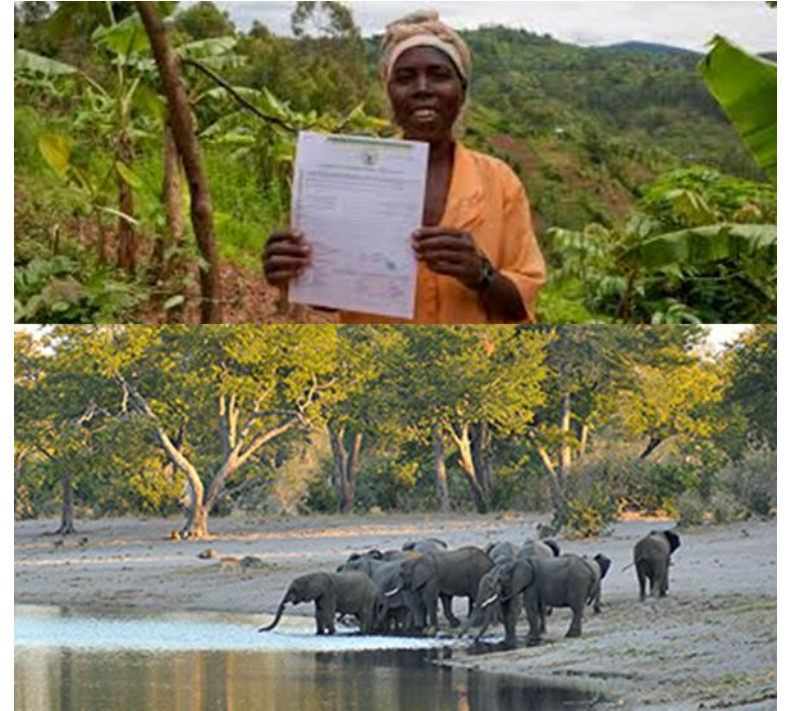
AFRICA BIODIVERSITY COLLABORATIVE GROUP

Piloting New Approaches for Securing Tenure in Three Critical Ecosystems in Africa

Land and Resource Rights Working Group

Land and Resource Tenure Rights Task

ABCG Members Objectives



CONSERVATION INTERNATIONAL



the Jane Goodall Institute



The Nature Conservancy
Protecting nature. Preserving life.



WORLD RESOURCES INSTITUTE



AFRICA BIODIVERSITY COLLABORATIVE GROUP

Land and Resource Tenure Rights Task

Approaches
Geographies



CONSERVATION INTERNATIONAL



the Jane Goodall Institute



The Nature Conservancy
Protecting nature. Preserving life.



WCS



WORLD RESOURCES INSTITUTE



AFRICA BIODIVERSITY COLLABORATIVE GROUP

Land and Resource Tenure Rights Task

Lessons Challenges

The screenshot shows the World Resources Institute (WRI) website. At the top left is the WRI logo and name. To the right are links for 'Other Sites', 'What We Do', 'Where We Work', 'Publications', 'Maps & Data', 'Blog', 'News', 'Events', 'About', and a 'DONATE' button. Below this is a navigation bar with categories: 'Climate', 'Energy', 'Food', 'Forests', 'Water', 'Cities', 'BUSINESS', 'ECONOMICS', 'FINANCE', and 'GOVERNANCE'. A search bar is on the right. The main content area features the article title 'The Risks of Making a Difference: Tundu Lissu Shot in Tanzania' by Peter Veit, dated October 16, 2017. Below the title are social media sharing options (Comments, Add Comment, Print, Twitter, Facebook, LinkedIn, etc.). A paragraph of text describes the article's content, and a photo of Tundu Lissu in parliament is shown with a caption.

The Risks of Making a Difference: Tundu Lissu Shot in Tanzania

by  Peter Veit - October 16, 2017

[Comments](#) | [Add Comment](#) | [Print](#) | [Twitter](#) | [Facebook](#) | [LinkedIn](#) | [More](#)

Tundu Lissu, a leading opposition member of the Tanzanian parliament and a former World Resource Institute (WRI) colleague who worked on community land rights, was injured in a shooting outside his home on September 7. Peter Veit, who has known Lissu for more than 20 years and saw him three weeks before the attack, writes about his friend and the risks he ran by making a difference.



Tundu Lissu in Parliament. Wikimedia

On 7 September, my dear friend and former colleague, Member of Parliament

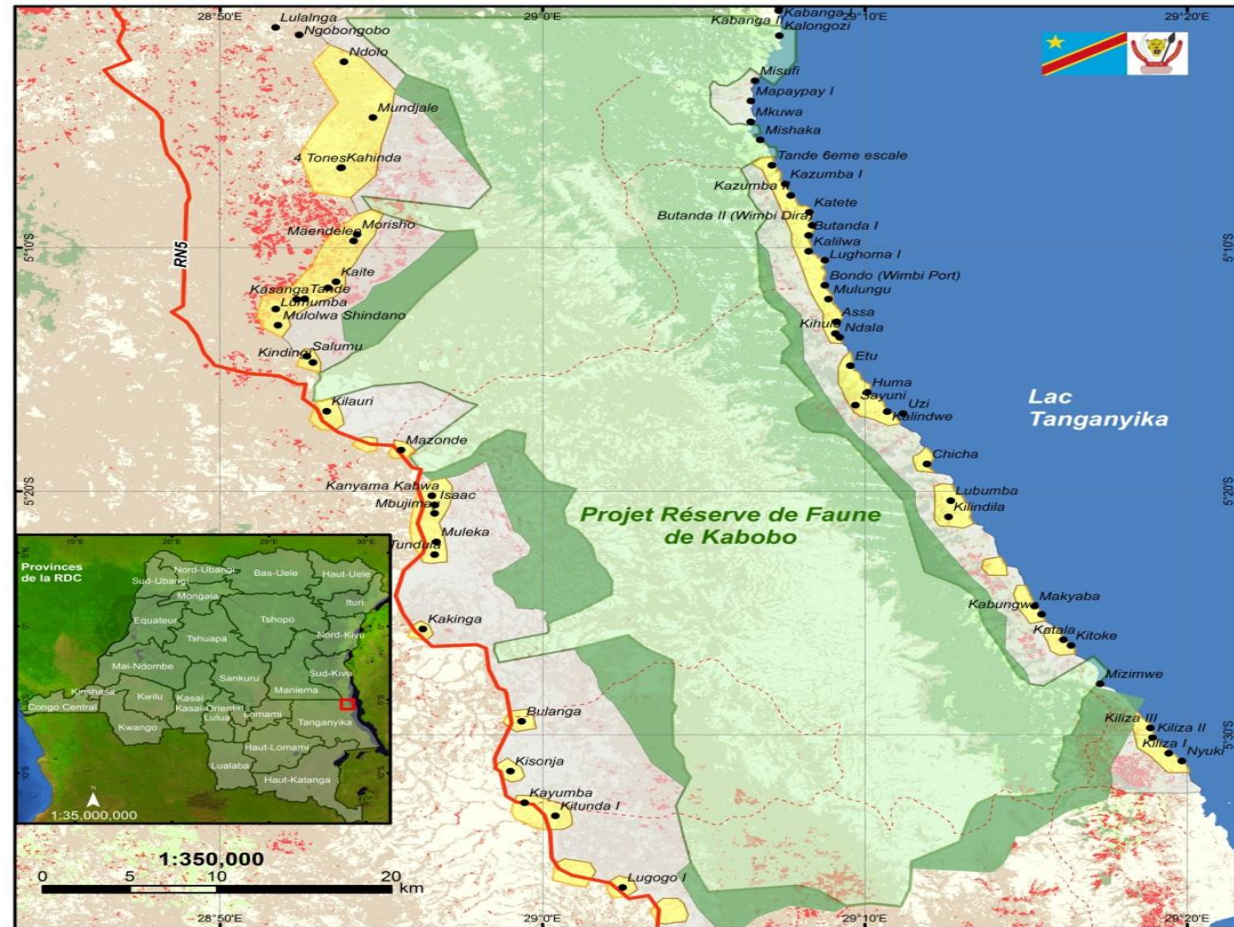


AFRICA BIODIVERSITY COLLABORATIVE GROUP

Kabobo Wildlife Reserve Democratic Republic of Congo

Wildlife Conservation Society

Kabobo Landscape



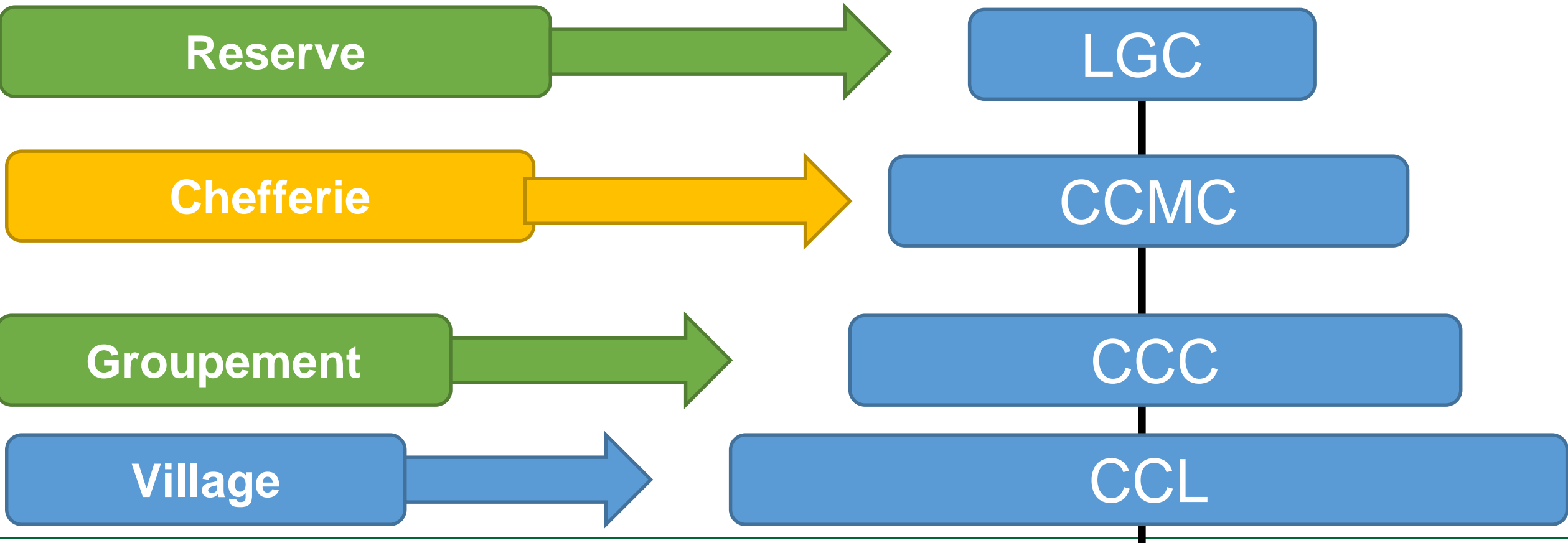
Context

- Kabobo is one of the biodiverse landscape in Albertine Region
 - new species discovered
 - number of species
 - endemic species
 - Locally important
 - Cultural and socio-economic values
 - political - protected area

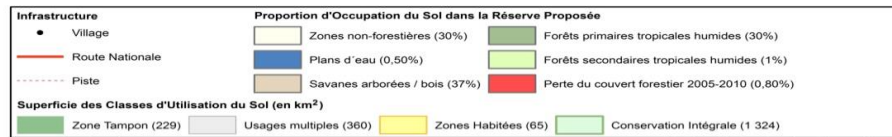
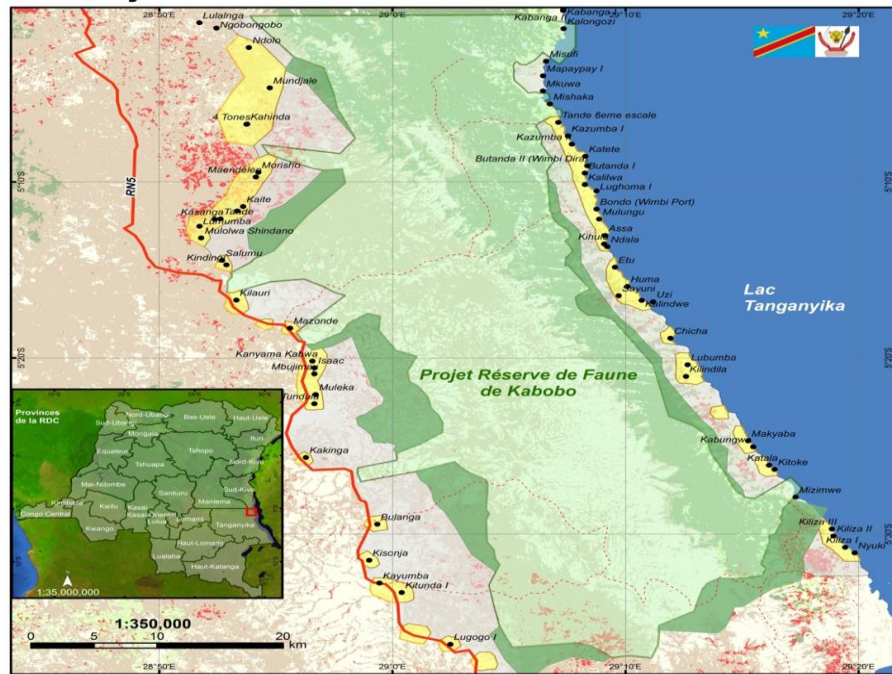


Photo credit: WCS.

Main Outputs -community structure settings



Establishing community rights to co-manage



Sources des données : Base de données WCS-RDC, Projet de Conservation de la Biodiversité de Kabobo, FACET (OSIFAC, 2012), Référentiel géographique commun de la RDC. Système de Coordonnées Géographiques : Ellipsoïde de référence : WGS84, Amorces chiffrées en degrés, minutes, Réalisation : WCS-RDC/SIG, Novembre, 2016.

Article 4

La réserve comprend trois zones dont les modes de gestion diffèrent;

A savoir:

- la zone de conservation destinée à acquérir le statut de Parc national;
- la zone tampon avec accès aux ressources identifiées par les communautés locales;
- la zone d'usages multiples qui est ouverte aux différentes activités quotidiennes.

Des mesures de gestion des zones tampons ainsi que les différents services écologiques accessibles dans la zone de conservation seront définis entre l'ICCN et les communautés riveraines au profit du développement durable;

Article 6

Le fonctionnement du comité local de gouvernance s'effectuera suivant la charte signée entre le Comité local de gouvernance et l'ICCN.

Representative co-management structure

- Meetings ICCN - LGC - WCS
- Women and Batwa included in the LGC



Photo credit: WCS.



Photo credit: WCS.



CONSERVATION INTERNATIONAL



the Jane Goodall Institute

The Nature Conservancy
Protecting nature. Preserving life.



WORLD RESOURCES INSTITUTE



AFRICA BIODIVERSITY COLLABORATIVE GROUP

Community user rights

- Consultative meetings held at village level
- Charter and internal by-law were developed and adopted by LGC



Consultative meeting at village level on the Kabobo gazettement process. Photo credit: WCS.

Empowering local structures

- Capacity building
 - conservation laws
 - power and limits of traditional chiefs
 - forestry code
 - land and conflict
- Regular meetings used as discussion forums



Meeting with stakeholders to discuss Kabobo gazettement. Photo credit: WCS.



CONSERVATION INTERNATIONAL



the Jane Goodall Institute



The Nature Conservancy
Protecting nature. Preserving life.



WORLD RESOURCES INSTITUTE



AFRICA BIODIVERSITY COLLABORATIVE GROUP

Key successes

- Gazettement of the reserve with community supports at village and provincial levels
- Support from local political authorities and communities to protect Kabobo - visit of Minister in USA
- Establishment of local community structures
- Integrate conflict resolution in conservation



AFRICA BIODIVERSITY COLLABORATIVE GROUP



One to one meetings regarding Kabobo gazettement. Photo credit: WCS.



Chief of the Buzito Village and community meeting in Miketo village. Photo credit: WCS.

Opportunities

- Political support from provincial authorities
- Kabobo being the newly created PA through participatory process
- Community support and attachment to the site



Photo credit: WCS.



AFRICA BIODIVERSITY COLLABORATIVE GROUP

Land Tenure Pilot Project Sites: Southern Tanzania (AWF, WRI)

- Joint effort of 4 ABCG members to identify and assess alternative approaches in Tanzania
- Consultant report endorsed Group CCROs (Certificates of Customary Rights of Occupancy) which AWF, TNC, and JGI are implementing in field
- Consultant also made several other recommendations, including engaging in the ongoing National Land Policy reform process
- WRI sharing findings/recommendations with senior government officials, Members of Parliament, and donors
- WRI supporting local NGO efforts in the Land Policy reform process (e.g., UCRT, TALA, etc.)

The local community viewpoint regarding the review, the procedure and the process of writing of the Tanzanian National Land Policy (December 2016 draft)

By Edward Lekaita¹, Ujamaa Community Resource Team (UCRT), Arusha, Tanzania

August 2017

1.0 Introduction

This article explains the ongoing new land policy formulation in Tanzania as led by the Ministry of Lands. Tanzania's current land policy of 1995 requires urgent review in order to help address current land-related challenges being experienced in the country. This is not to say however that everything in the 1995 National Land Policy is obsolete, as some of the foundational principles of the land policy continue to remain valid: they work well and should be protected and promoted. One of these key principles is the decentralization of land administration to local communities as a means for protecting their land rights. It is important that the new land policy formulation should continue to promote and protect local communities rights to land by maintaining the existing categorization of land, its administration and control between local communities and government.

The process of writing the new National Land Policy of 2016 for Tanzania began officially in August 2016. The exercise was prompted by the fact that the current National Land Policy of 1995 is now outmoded and requires major review in order to respond to the changing socio-economic and environmental circumstances of Tanzania. Critical issues include longstanding and increasing incidences of land conflict between different land users and particularly between farmers and pastoralists, the increasing shortage of fertile land due to the growth in the country's population which has almost doubled since 1990, a need to better address land grabbing, and the need to correct a problematic contradiction in the land laws. It is understood that the aim of the government in its development of the new policy is both to address these



THE UNITED REPUBLIC OF TANZANIA
MINISTRY OF LANDS, HOUSING AND HUMAN
SETTLEMENTS DEVELOPMENT



DRAFT
THE NATIONAL LAND POLICY, 2016

For external consultations with stakeholders.

Fifth Edited Dar es Salaam Version

Date Wednesday, 26 October 2016

1



CONSERVATION
INTERNATIONAL



the Jane Goodall Institute



The Nature
Conservancy
Protecting nature. Preserving life.



WORLD
RESOURCES
INSTITUTE



AFRICA BIODIVERSITY COLLABORATIVE GROUP

Land Tenure Pilot Project Sites: Western Tanzania (TNC)

Tuongane (“Let’s Unite” in Kiswahili) Project Introduction

- Collaborative project between The Nature Conservancy and Pathfinder International to enable communities to create healthier families, forests, and fisheries.
- Tuongane’s goal is to work with local governments and communities to address environmental and health challenges in the Greater Mahale Ecosystem, in Western Tanzania.
- ABCG-funded pilot is helping to strengthen resource rights and secure tenure, both critical towards empowering communities and promoting stewardship of land and natural resources.
- TNC is supporting District Authorities to issue Certificates of Customary Rights of Occupancy (CCROs).



CONSERVATION INTERNATIONAL



the Jane Goodall Institute

The Nature Conservancy
Protecting nature. Preserving life.



WORLD RESOURCES INSTITUTE



AFRICA BIODIVERSITY COLLABORATIVE GROUP

Land Tenure Pilot Project Sites: Western Tanzania (TNC)

Tuungane Activities

- Build capacity of Tanganyika and Uvinza District staff, local leaders, Village Land Use Management (VLUM) teams to improve land use planning and land titling management skills.
- Train local leaders and VLUM teams on how to develop land use plans and land titling bylaws.
- Raise awareness through workshops and meetings on the importance of CCROs in Tanganyika and Uvinza Districts.
- Support District Authorities to issue CCROs for three villages.



Local fisherman from Katumbi village on Lake Tanganyika in Tanzania. Photo credit: Ami Vitale.



CONSERVATION INTERNATIONAL



Protecting nature. Preserving life.



WORLD RESOURCES INSTITUTE



AFRICA BIODIVERSITY COLLABORATIVE GROUP

Land Tenure Pilot Project Sites: Western Tanzania (TNC)

Tuongane Accomplishments

- High-level District officials, members of the Participatory Land Use Management team, and local leaders from ten villages trained on land use planning and land titling.
- Land use plans in six villages have been prepared, a result of TNC's collaboration with the National Land Use Planning Commission and the Tanganyika District Council.

Tuongane Next Steps

- CCRO awareness meetings will be conducted in Mgambazi, Rukoma, Lubalisi villages (Uvinza District) in preparation of CCRO issuance.
- Issue CCROs in Mgambazi, Rukoma, Lubalisi.



Lake Tanganyika in Tanzania where TNC's and partners are implementing the Tuongane project. Photo credit: Ami Vitale.



CONSERVATION
INTERNATIONAL



the Jane Goodall Institute



The Nature
Conservancy
Protecting nature. Preserving life.



WORLD
RESOURCES
INSTITUTE



AFRICA BIODIVERSITY COLLABORATIVE GROUP

Land Tenure Pilot Project Sites: Western Tanzania (JGI)

- JGI's ABCG activities support land use planning work implemented under the Landscape Scale Community Centered Ecosystem Conservation Program in Western Tanzania CoAg
- The goal of the program is to conserve biodiversity and to protect and restore wildlife habitat in critical ecosystems in western Tanzania. Specifically, the program aims to achieve the following intermediate results:
 - ★ Expanded area under improved natural resource management
 - ★ Increased incomes and benefits from sustainable use of natural resources
- CCROs being piloted in 2 villages, Vikonge and Mnyamasi of Nsimbo and Mpanda Districts
- Support to both District issuing agencies, Village Councils and Assemblies, VLUM teams and Adjudication Committees
- Intention is to have CCROs Issued by December 2017



Land Tenure Pilot Project Sites: Western Tanzania (JGI)

Progress to Date:

- Procurement of IT equipment to store and issue CCRO documentation
- Initial Meetings with Village Councils to agree on Village Adjudication Committee membership
- Outreach Meetings with villagers - focus on vulnerable households
- Training in Conflict Management for Village Council Staff (using Dispute Mechanisms under existing legislation)
- Initial GIS Survey work undertaken



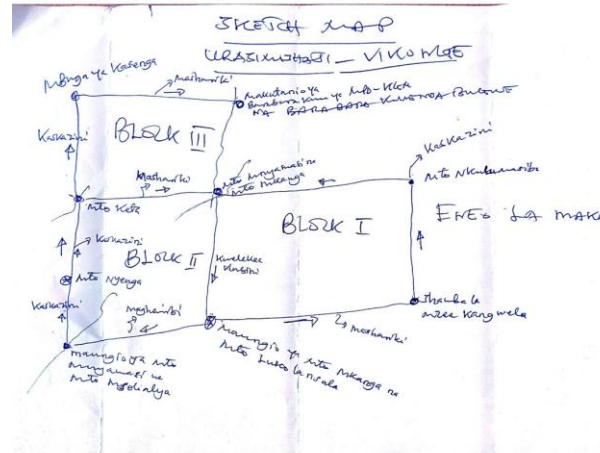
Mapping GPS Points for CCRO Issuance by JGI. Photo Credit: JGI.

Land Tenure Pilot Project Sites: Western Tanzania (JGI)

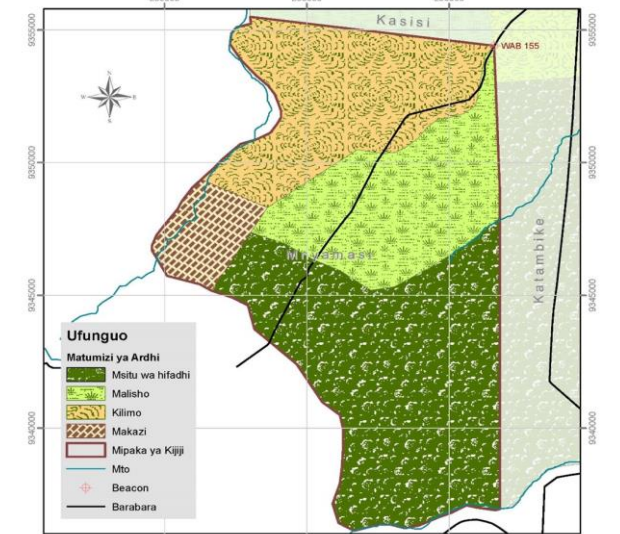
Next Steps:

Additional meetings with Village Councils and Assemblies (NB: female participation)

- GIS Training with District and Village staff
- Complete Survey work
- Submit CCRO application paperwork & fees
- Target Date for Issuance of title documents is December 2017



Mpango wa matumizi bora ya Ardhi - Kijiji cha Mnyamasi



Matumizi	Ukubwa (Ha)	Asilimia
Msitu wa hifadhi	6,980.9	45%
Malisho	3,594.9	23%
Kilimo	3,943.9	25%
Makazi	964.4	6%
JUMLA	15,484.1	100%

0 1 2 3 4 5 Kilometers

GIS - WGS 1984 UTM Zone 38S
Projection - Transverse Mercator
Linear Unit - Meter

Digital Cartography and GIS by Paul Meyer - JGI, 2017

Scanned by CamScanner



CONSERVATION INTERNATIONAL



the Jane Goodall Institute



WORLD RESOURCES INSTITUTE



AFRICA BIODIVERSITY COLLABORATIVE GROUP

AWF work in Southern Tanzania

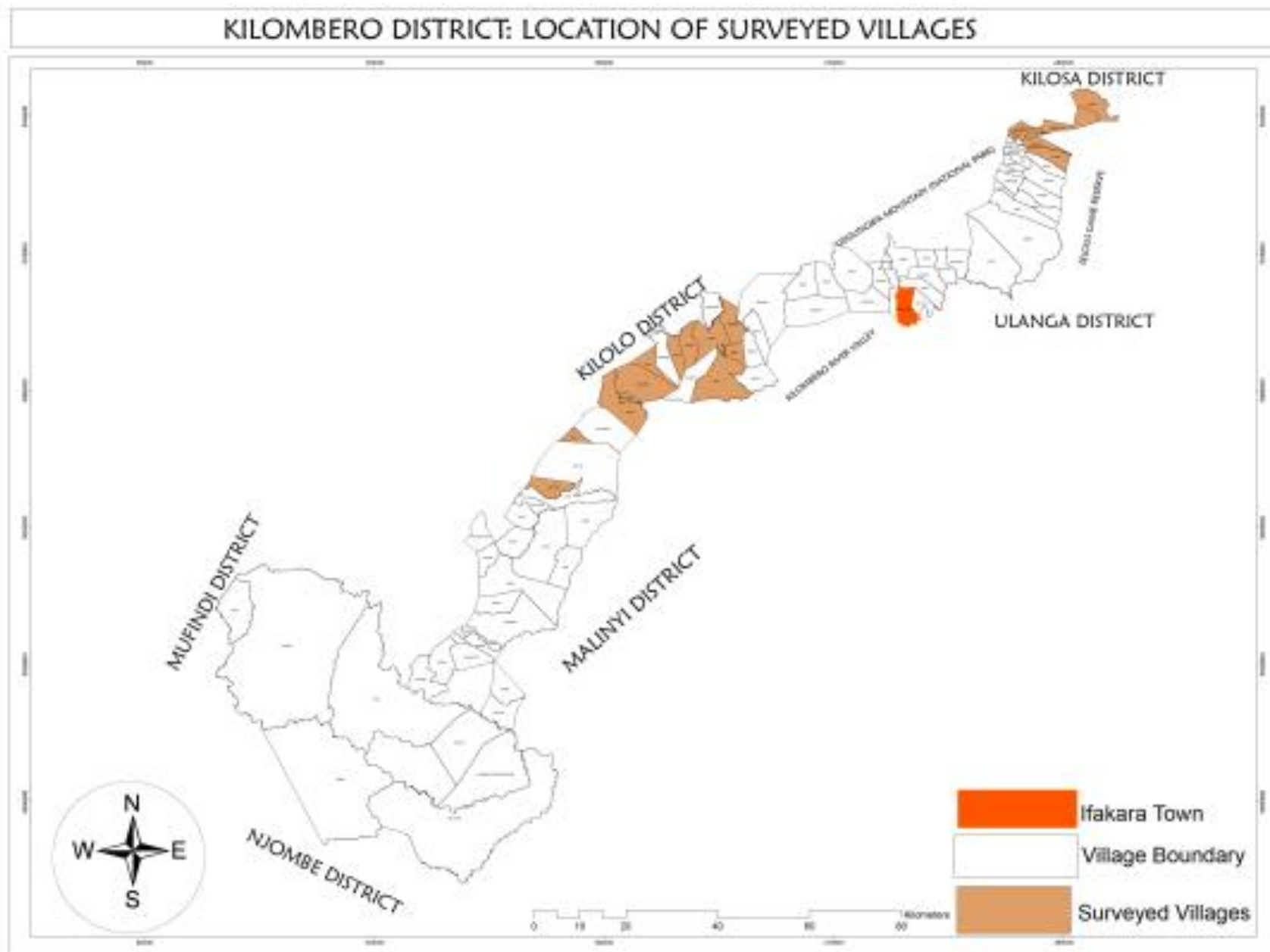
Overall Purpose of activities:

- To engage communities at village level and sensitize them on the importance of tenure security (both individual and group CCROs)

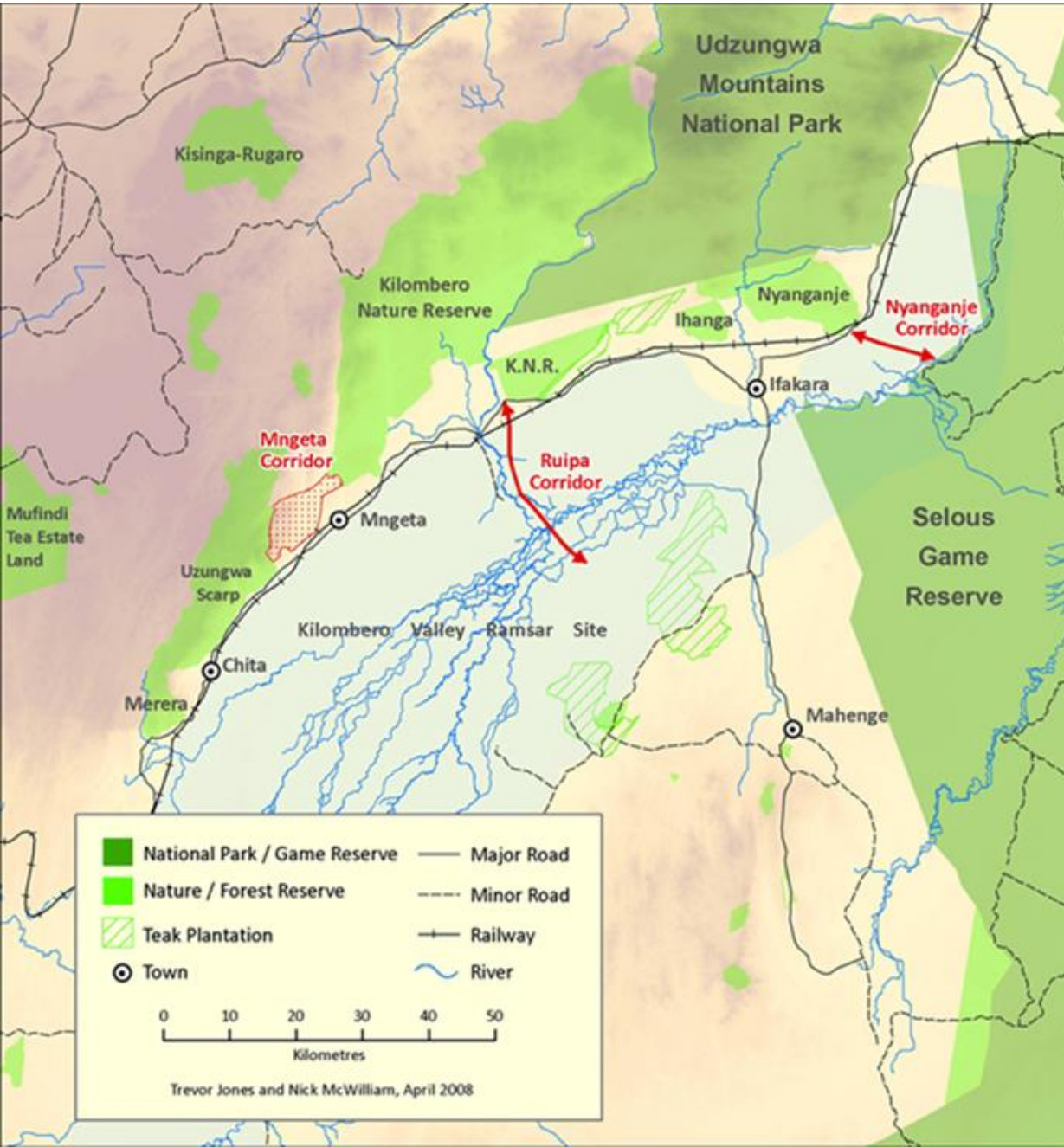
Progress to date:

- Secured buy-in from the leadership of the Tanzania National Land Use Planning Commission (NLUPC) to survey local communities in 20 villages about access and use rights over land in the Kilombero Valley in Southern Tanzania's SAGCOT Region
- The assessments in 20 villages documented land tenure status, socio-economic and biodiversity profiles in the Mngeta Corridor and Udzungwa- Magombera landscapes (Map 1).

Location of AWF led program area



Geographical Context of the area where LUP is key



Mr. Ismail Kipalanga of Mkula Village holding his CCROs



Photo credit: AWF.

Key findings and next steps

- Effective and sustainable land use and land tenure security requires planning, administration and management to be a bottom-up process largely engineered at village level
- Land surveys and titling has not been adequately undertaken in villages within the landscapes
- By August 2017, a total of 22,814 farms had been adjudicated, about 6000 CCROs prepared and 2100 CCROs issued through the Land Tenure Support Program (LTSP) in collaboration with Kilombero District Council.
- There is a need of promoting issuance of CCROs (both individual and group CCROs) in order to ensure tenure security and protect the natural environment at this time where the cluster is attracting different kind of investment

Next Steps

- AWF and the NLUPC will convene a stakeholders' dialogue in late November 2017 where findings of the assessments and surveys done in Kilombero will be presented. It is hoped that this will influence land policy at national level

Thank you!



Photo credit: Ami Vitale.



Photo credit: Ami Vitale.



CONSERVATION INTERNATIONAL



the Jane Goodall Institute

The Nature Conservancy
Protecting nature. Preserving life.



WORLD RESOURCES INSTITUTE



AFRICA BIODIVERSITY COLLABORATIVE GROUP