

Implementation of Land Policy for Improved Ecosystem Management and Land Tenure in East Africa



the Jane Goodall Institute

Lilian Pintea, VP Conservation Science, Vienna, VA, USA

lpintea@janegoodall.org Phone: +1-703-682-9221

Laws and policies governing LUP



Other supporting laws

- *Forest Act*
- *Wildlife Act*
- *Environmental Management Act*
- *Water Act*
- *Beekeeping Act*
- *Agriculture Act*

- **Land Act (1999)**
 - Focuses on general land and conflict resolution
- **Village Land Act (1999)**
 - directs land governance and provides power to establish village committees
- **Urban planning Act (2007)**
 - land management for towns and semi-urban centers
- **Land Use Planning Act (2007)**
 - establishes National Land Use commission, gives power to appropriate authorities for land use planning.
 - empowers the commission to develop guidelines

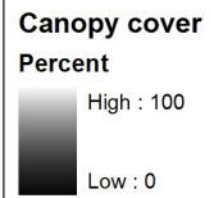
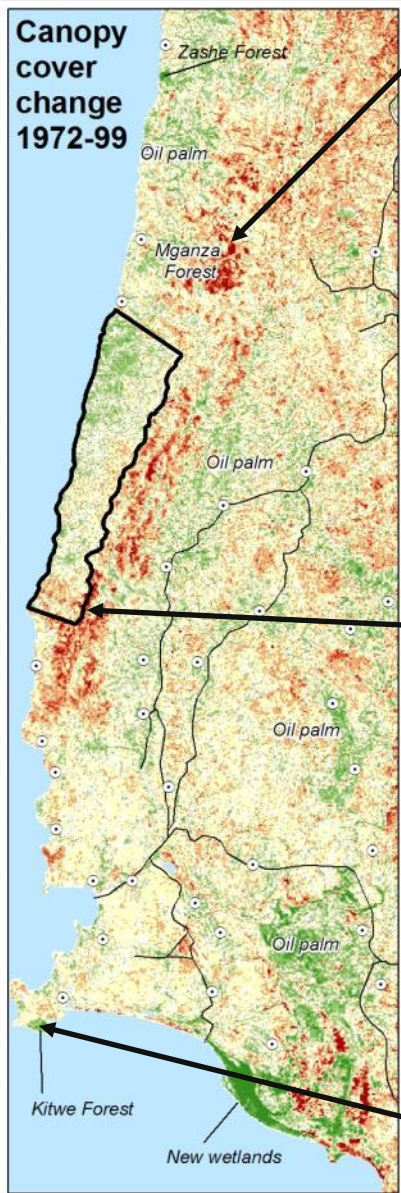
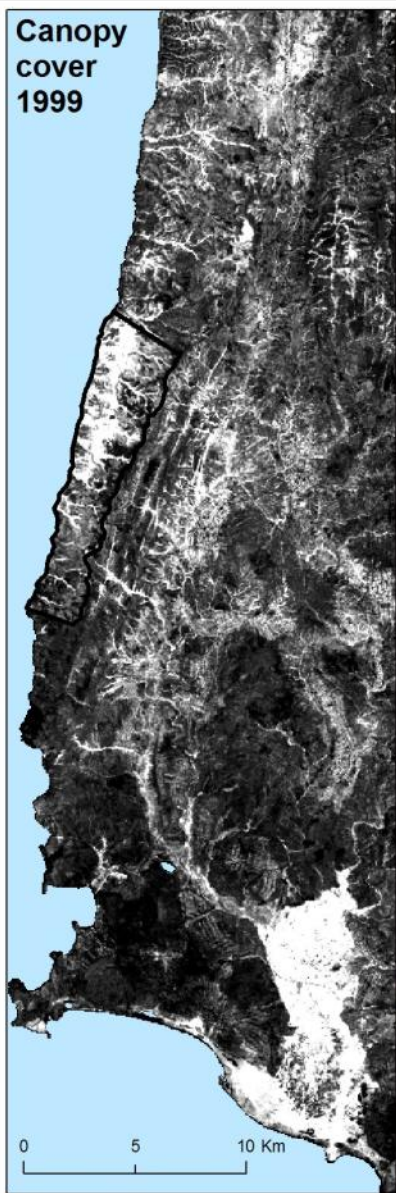
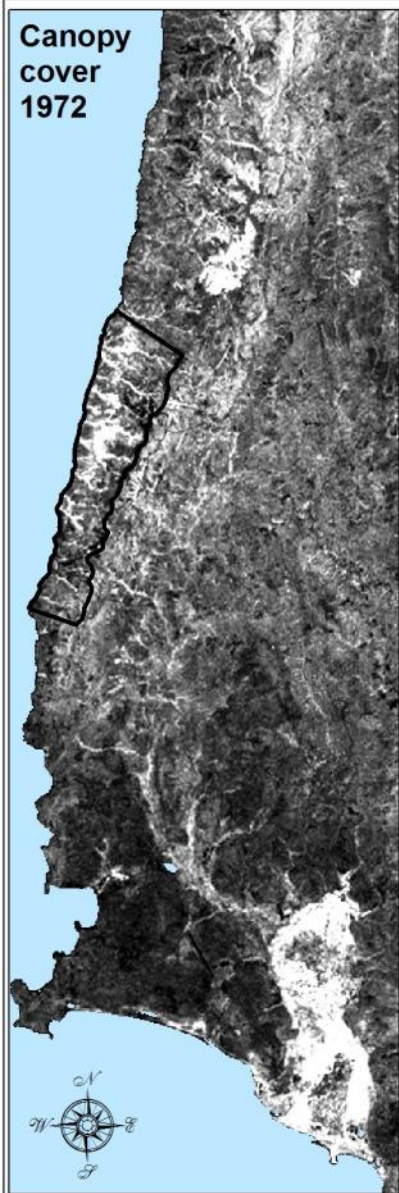
Key Steps for Village Land Use Planning



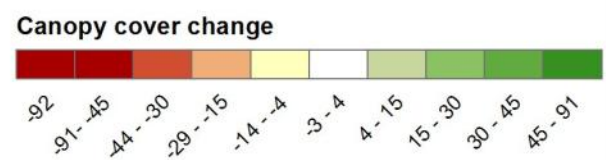
1. Sensitization and Education including establishment of PLUM and VLUM
2. Participatory village assessment including collecting socio-economic information
3. Village map development of provision of technical support to guide the process
4. Zoning and drafting of land uses including by-laws establishment
5. Endorsement at village, district and ministerial levels
6. Monitoring and Evaluation – work plan and follow-up

Study Area: Greater Gombe Ecosystem





- Gombe NP
- Water
- Major roads
- Settlements



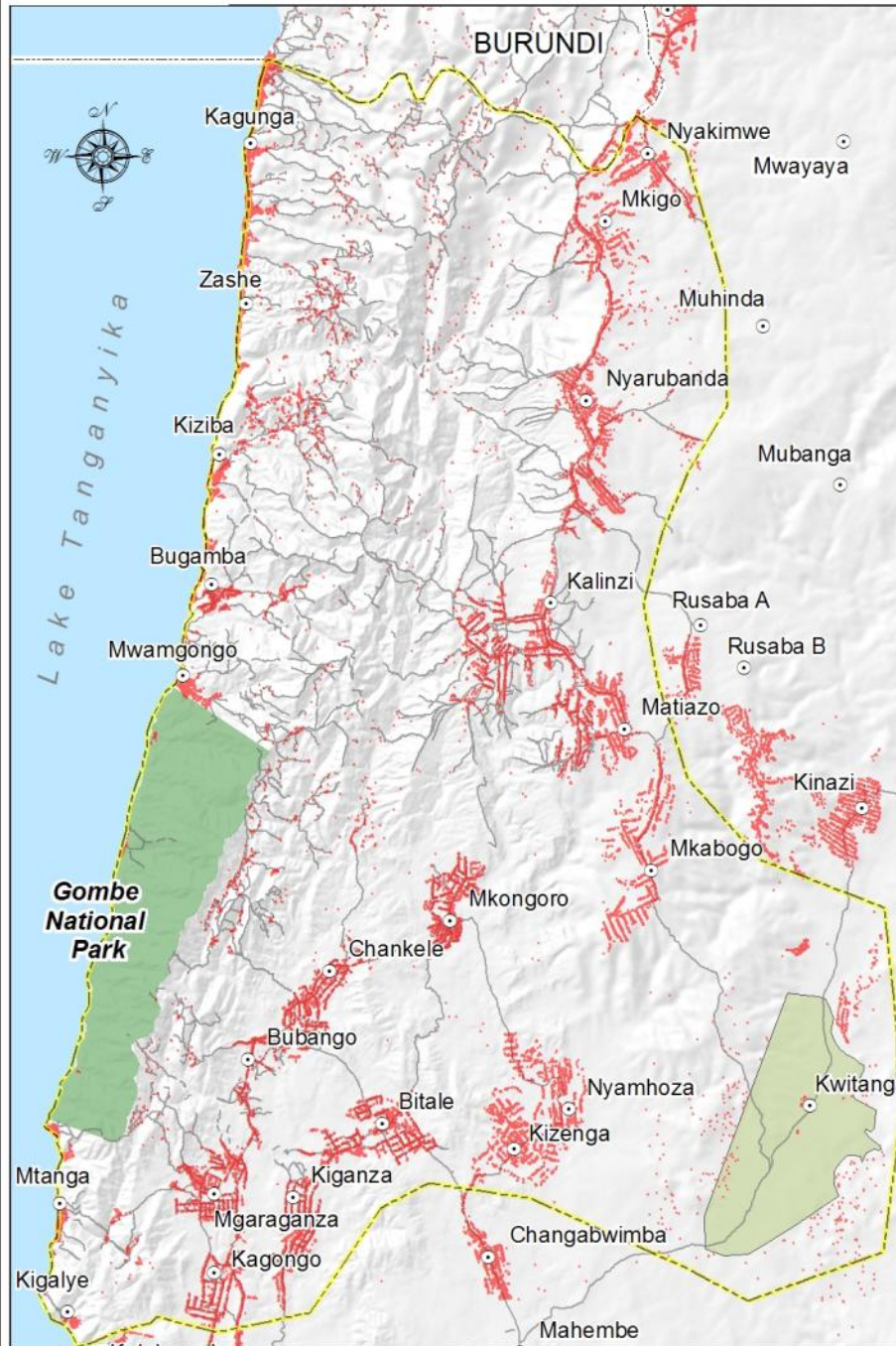
“Perfect Storm” of Threats

Chimpanzee communities as separate conservation targets in the Greater Gombe CAP

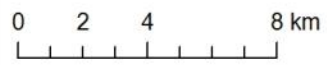


Table 2: Threats with an Overall Rating of “Very High” or “High”

Threats Across Targets		Mitumba Chimpanzee Community	Kasekela Chimpanzee Community	Kalande Chimpanzee Community	Kwitanga Chimpanzee Community	Zashe Chimpanzee Community	Chimpanzee Metapopulation	Stable Watersheds and Village Forest Reserves	Kwitanga Corridor	Overall Threat Rank
		1	2	3	4	5	6	7	8	
1	Incompatible food crops; incompatible conversion to food crops	High	Low	Very High	High	Very High	High	High	High	Very High
2	Incompatible settlements and infrastructure; incompatible conversion to settlements and infrastructure development	Very High	Low	High	Medium	Very High	High	High	High	Very High
3	Incompatible extraction of firewood	Low	-	Medium	High	High	High	Very High	High	Very High
4	Deliberate killing by humans	High	Low	High	High	Very High			Medium	Very High
5	Incompatible human-ignited fires	Low	Low	High	High	High	Medium	High	Medium	High
6	Lack of conservation and land-use planning, and inadequate implementation of appropriate land-use plans						Medium	Very High	High	High
7	Pathogens introduced by humans and human activities	High	High	High	Medium	High				High
8	Incompatible charcoal production	Medium		Medium	High	Medium	Low	High	Medium	High
9	Kasekela community expansion	High		High						High
Threat Status for Targets and Project		Very High	Medium	Very High	High	Very High	High	Very High	High	Very High



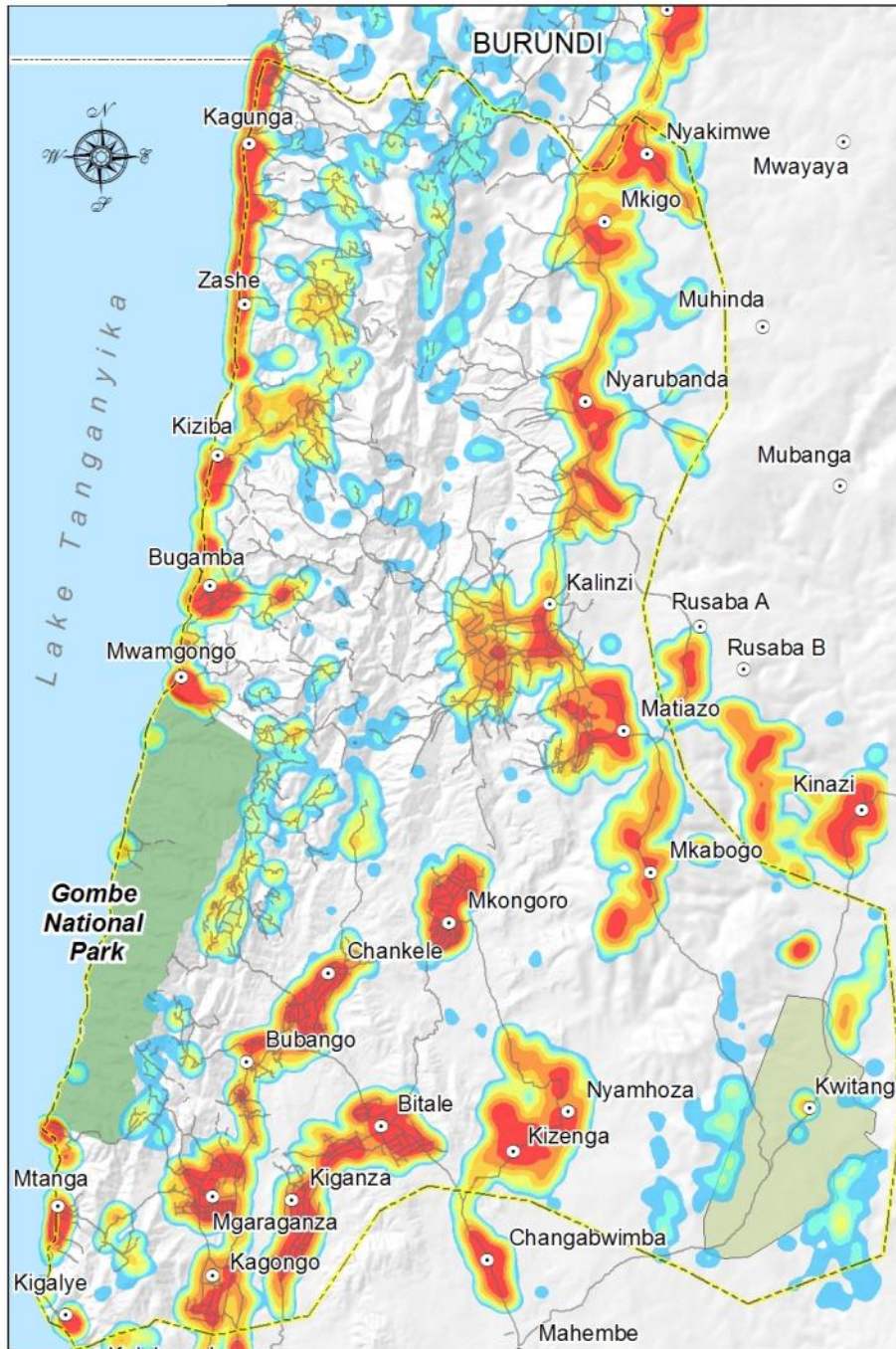
- Settlements
- Greater Gombe Ecosystem
- Human structures / houses
- Roads/footpaths outside Gombe
- Kwitanga prison forest
- Gombe N. Park (Cons. core)
- Tanzania boundary



Chimp Data Sources:
Kamenya 2007; Cyprian 2006;
Ndumuligo 2004-2006;
Greengrass 2000

Houses, roads and footpaths
mapped from June, 2005
QuickBird satellite image

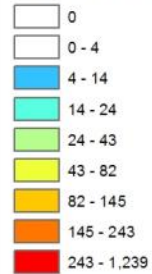
Map developed by: Lilian Pintea, JGI



- Settlements
- ▭ Greater Gombe Ecosystem
- Roads/footpaths outside Gombe
- ▭ Kwitanga prison forest
- ▭ Gombe N. Park (Cons. core)
- ▭ Tanzania boundary

House Density

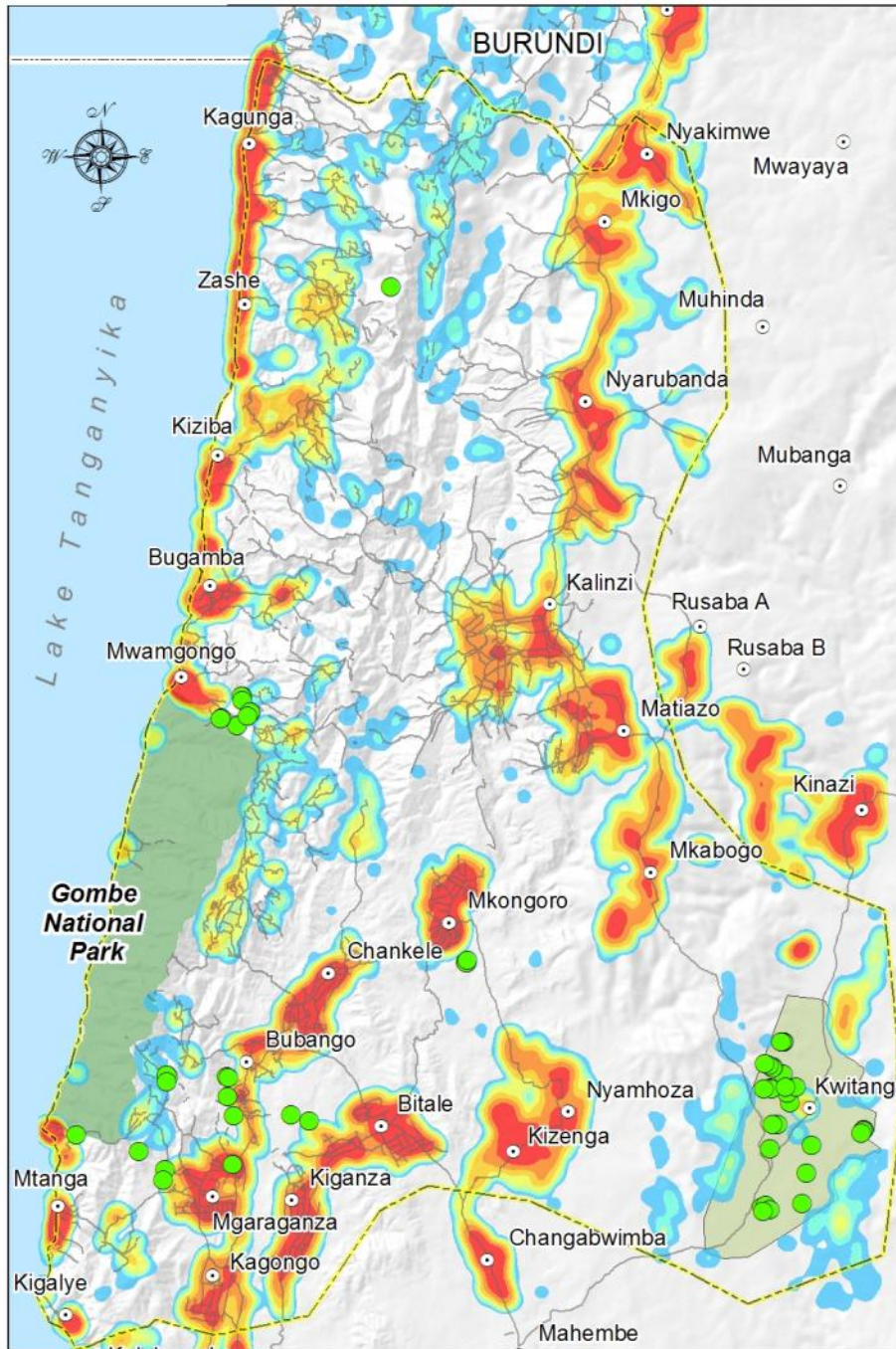
Structures / 500 m radius



Chimp Data Sources:
Kamenya 2007; Cyprian 2006;
Ndumuligo 2004-2006;
Greengrass 2000

Houses, roads and footpaths
mapped from June, 2005
QuickBird satellite image

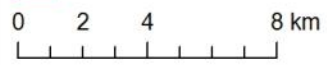
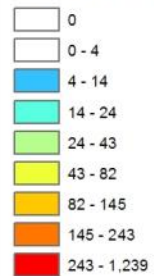
Map developed by: Lilian Pintea, JGI



- Chimp sightings outside Gombe
- Settlements
- Greater Gombe Ecosystem
- Roads/footpaths outside Gombe
- Kwitanga prison forest
- Gombe N. Park (Cons. core)
- Tanzania boundary

House Density

Structures / 500 m radius

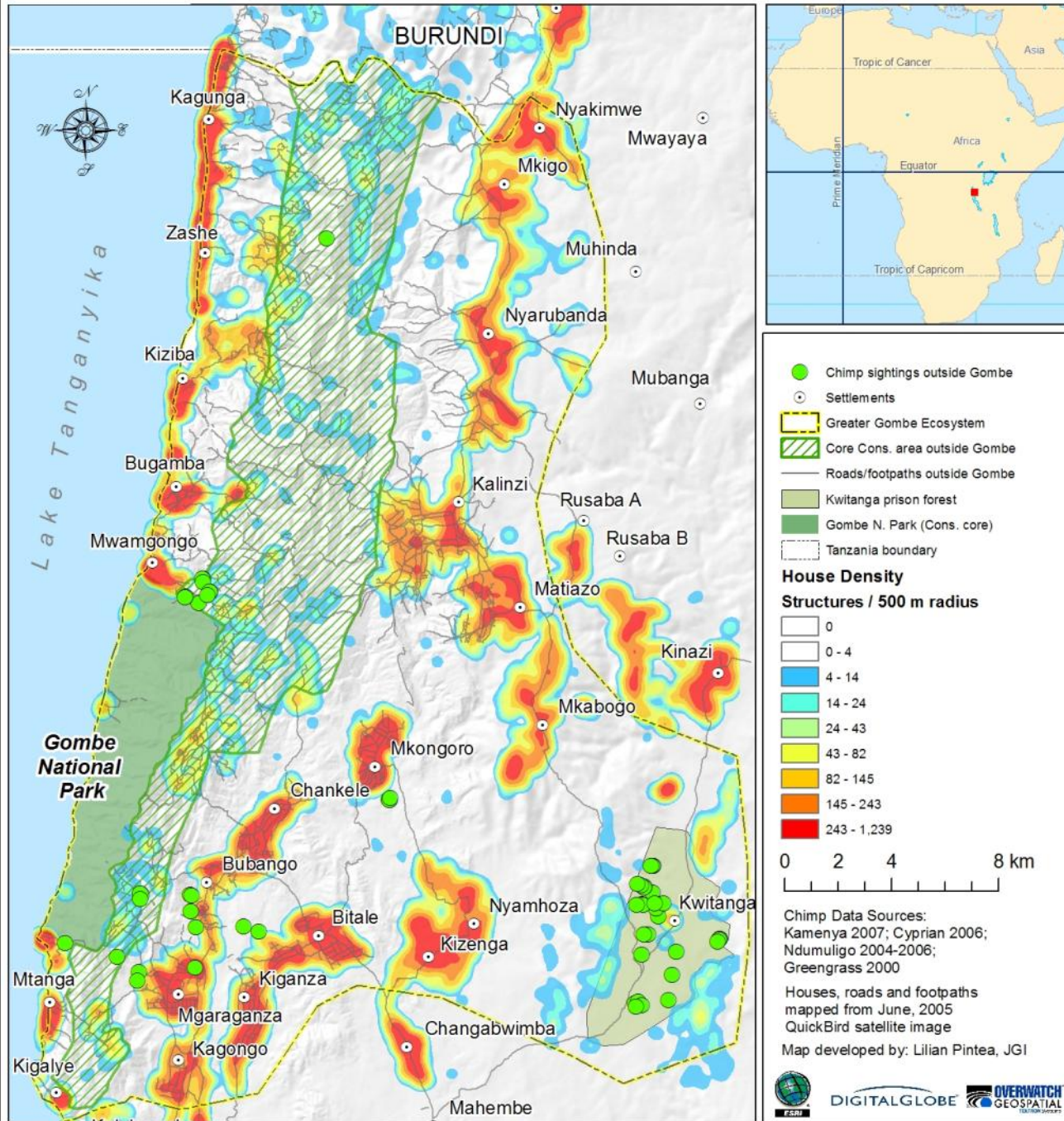


Chimp Data Sources:
Kamenya 2007; Cyprian 2006;
Ndumuligo 2004-2006;
Greengrass 2000

Houses, roads and footpaths
mapped from June, 2005
QuickBird satellite image

Map developed by: Lilian Pintea, JGI





Gombe National Park

Kalinzi

US Dept of State Geographer
© 2012 Google
Image © 2012 DigitalGlobe
Image © 2012 GeoEye

Google earth

Imagery Date: 6/10/2005

lat -4.713223° lon 29.658008° elev 1063 m

Eye alt 21.65 km

Conservation core area
defined by CAP

Kalinzi

US Dept of State Geographer
© 2012 Google
Image © 2012 DigitalGlobe
Image © 2012 GeoEye

Google earth

Imagery Date: 6/10/2005

lat -4.713223° lon 29.658008° elev 1063 m

Eye alt 21.65 km

Connecting CAP and Participatory Village Land Use Planning processes



452m

esri®

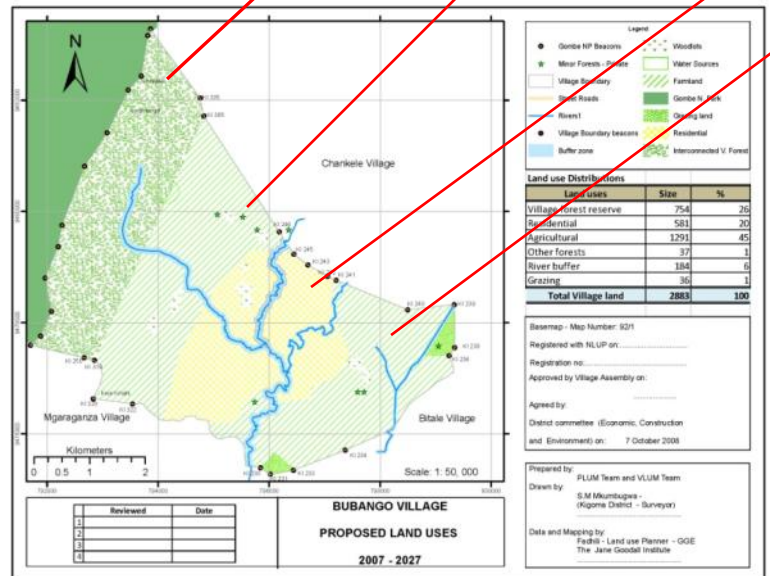
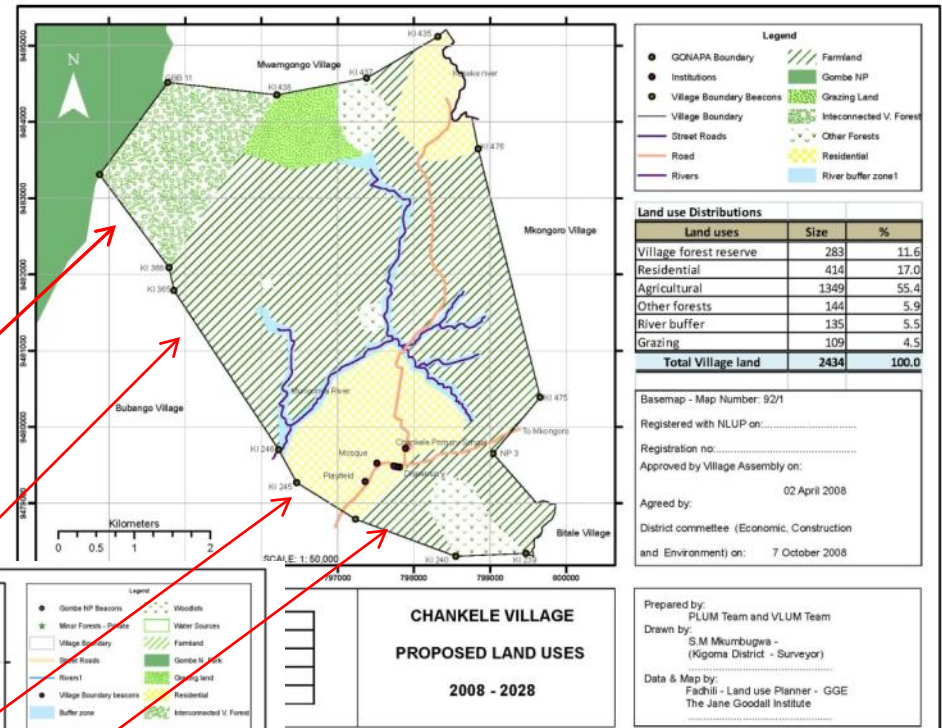
Participatory Village Land Use Planning



- Participatory approach, as per guidelines of the NLUPC
- Facilitated by KDC PLUM Teams
- As directed by the Land Act and Village Land Act, 1999



Village land use plans guided by CAP



Conservation core area
defined by CAP

Kalinzi

US Dept of State Geographer
© 2012 Google
Image © 2012 DigitalGlobe
Image © 2012 GeoEye

Google earth

Imagery Date: 6/10/2005

lat -4.713223° lon 29.658008° elev 1063 m

Eye alt 21.65 km

Conservation core area
defined by CAP

Village boundaries

Kalinzi

US Dept of State Geographer
© 2012 Google
Image © 2012 DigitalGlobe
Image © 2012 GeoEye

Google earth

Imagery Date: 6/10/2005

lat -4.713223° lon 29.658008° elev 1063 m

Eye alt 21.65 km

Conservation core area
defined by CAP

Village boundaries
&
Village Forest Reserves
established by
land use plans

Kalinzi

US Dept of State Geographer
© 2012 Google
Image © 2012 DigitalGlobe
Image © 2012 GeoEye

Google earth

Conservation core area
defined by CAP

Village boundaries
&
Village Forest Reserves
established by
land use plans

Kalinzi

US Dept of State Geographer
© 2012 Google
Image © 2012 DigitalGlobe
Image © 2012 GeoEye

Google earth

Imagery Date: 6/10/2005

lat -4.713223° lon 29.658008° elev 1063 m

Eye alt 21.65 km

Conservation core area
defined by CAP

Village boundaries
&
Village Forest Reserves
established by
land use plans

Kalinzi

US Dept of State Geographer
© 2012 Google
Image © 2012 DigitalGlobe
Image © 2012 GeoEye

Google earth

Imagery Date: 6/10/2005

lat -4.713223° lon 29.658008° elev 1063 m

Eye alt 21.65 km

Conservation core area
defined by CAP

Village boundaries
&
Village Forest Reserves
established by
land use plans

Kalinzi

US Dept of State Geographer
© 2012 Google
Image © 2012 DigitalGlobe
Image © 2012 GeoEye

Google earth

Imagery Date: 6/10/2005

lat -4.713223° lon 29.658008° elev 1063 m

Eye alt 21.65 km

Conservation core area
defined by CAP

Village boundaries
&
Village Forest Reserves
established by
land use plans

Kalinzi

US Dept of State Geographer
© 2012 Google
Image © 2012 DigitalGlobe
Image © 2012 GeoEye

Google earth

Imagery Date: 6/10/2005

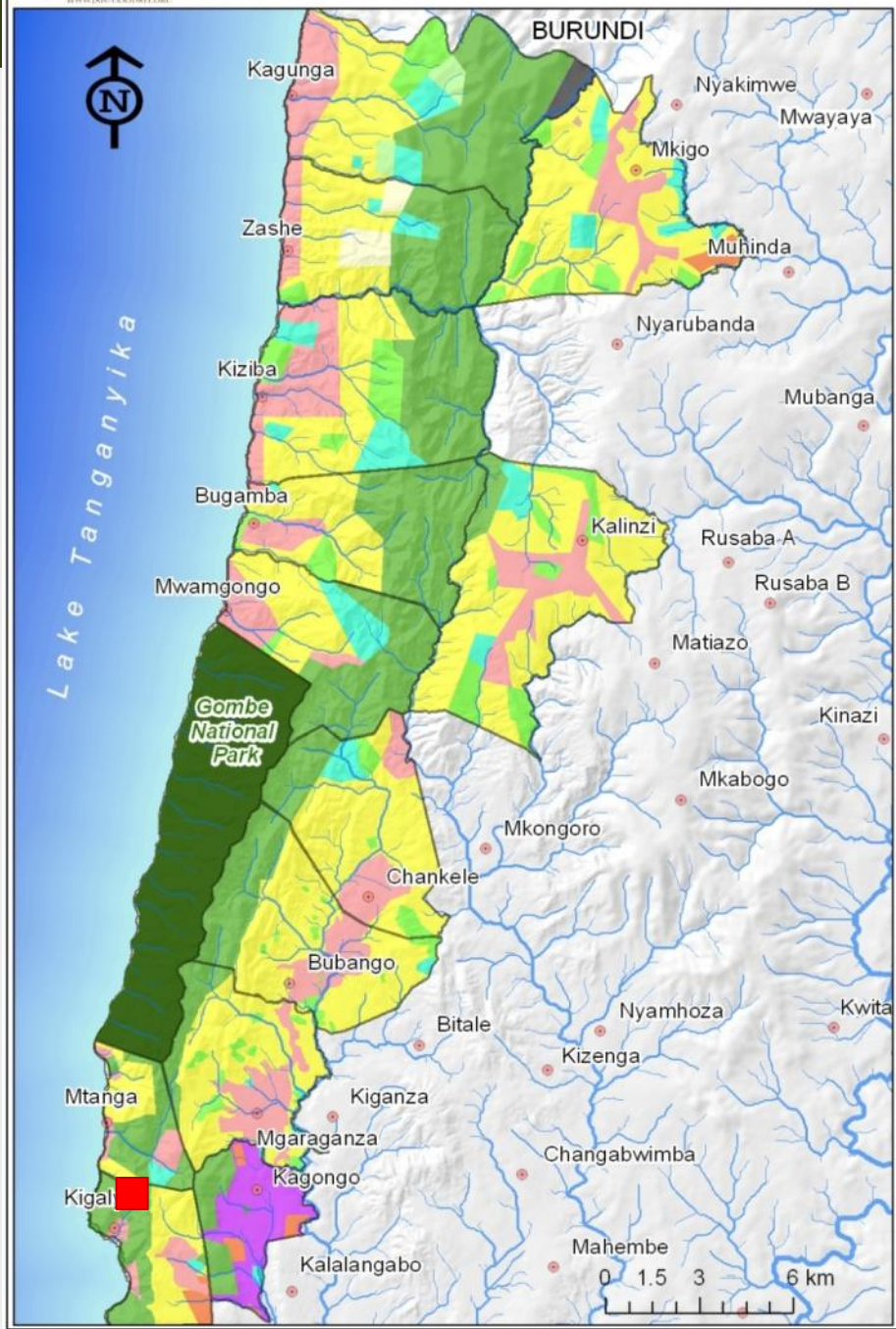
lat -4.713223° lon 29.658008° elev 1063 m

Eye alt 21.65 km

The result?



Village land use plans established individually for a coordinated result



Legend

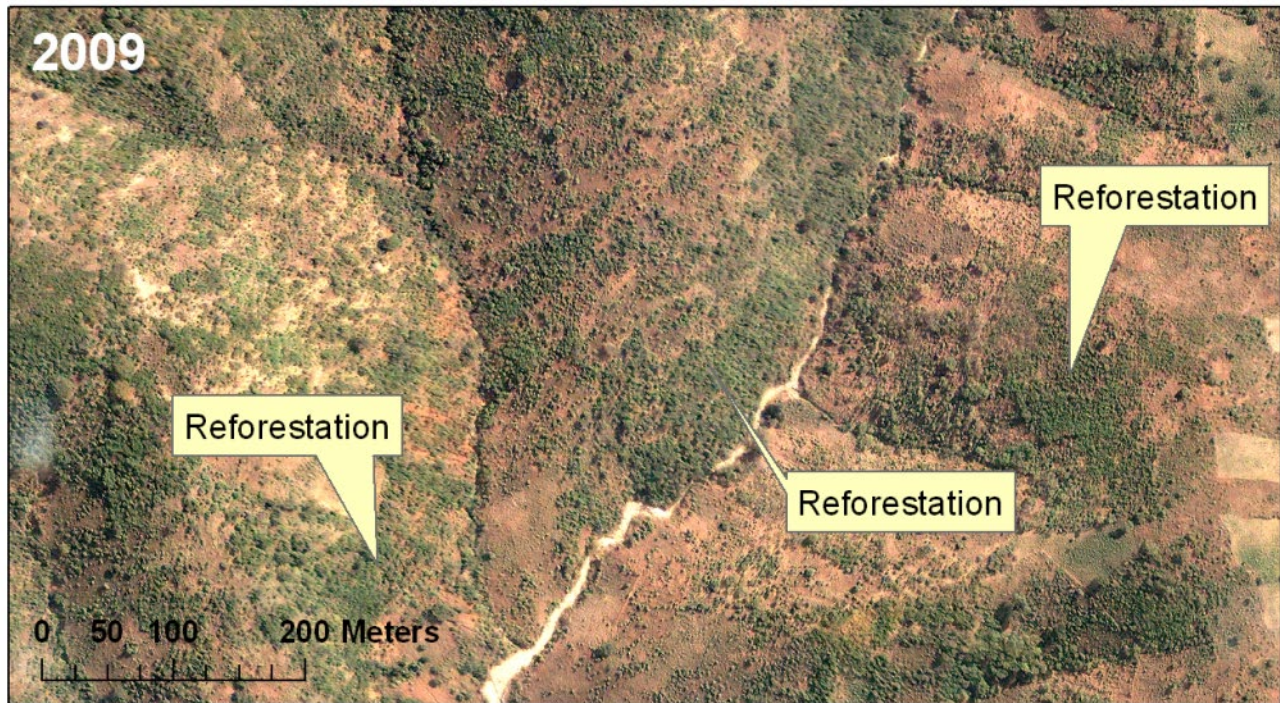
- Village boundary
- Settlements
- Land Use(2009-2029)**
 - Aggriculture/Residence
 - Agriculture
 - Agriculture/Forest
 - Clay soil mining site
 - Conflict area
 - Graze
 - Residence extension
 - Oilpalm/Residence
 - Open Land
 - Residence
 - Village forest reserve
 - Woodlot/Forest
 - Gombe National Park

Land use mapping: Jovin Lwehabura
Houses, roads and footpaths derived from 2005 QuickBird imagery: William Whatley
Map developed by: Lilian Pintea

Implementation



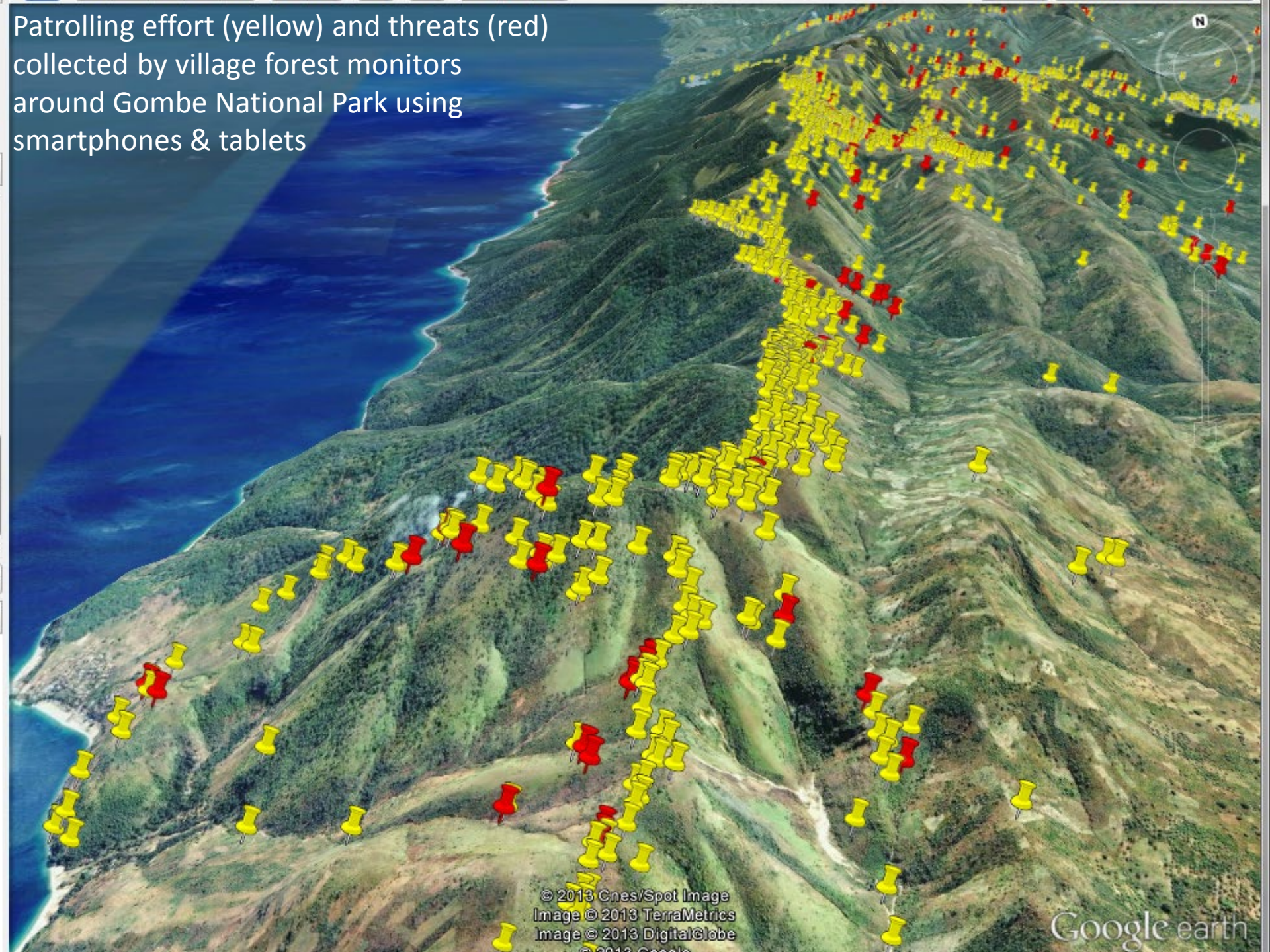
Monitoring with 60-cm
QuickBird satellite
Imagery



Community Forest Monitoring using mobile mapping



Patrolling effort (yellow) and threats (red) collected by village forest monitors around Gombe National Park using smartphones & tablets



© 2013 Cnes/Spot Image
Image © 2013 TerraMetrics
Image © 2013 DigitalGlobe
© 2013 Google

Google earth

Thank You!

