



the Jane Goodall Institute

FOR WILDLIFE RESEARCH, EDUCATION AND CONSERVATION

Ensuring The Survival of Great Apes in Eastern DRC



Dario Merlo, Project Coordinator,
Community Centered Conservation Program



the Jane Goodall Institute

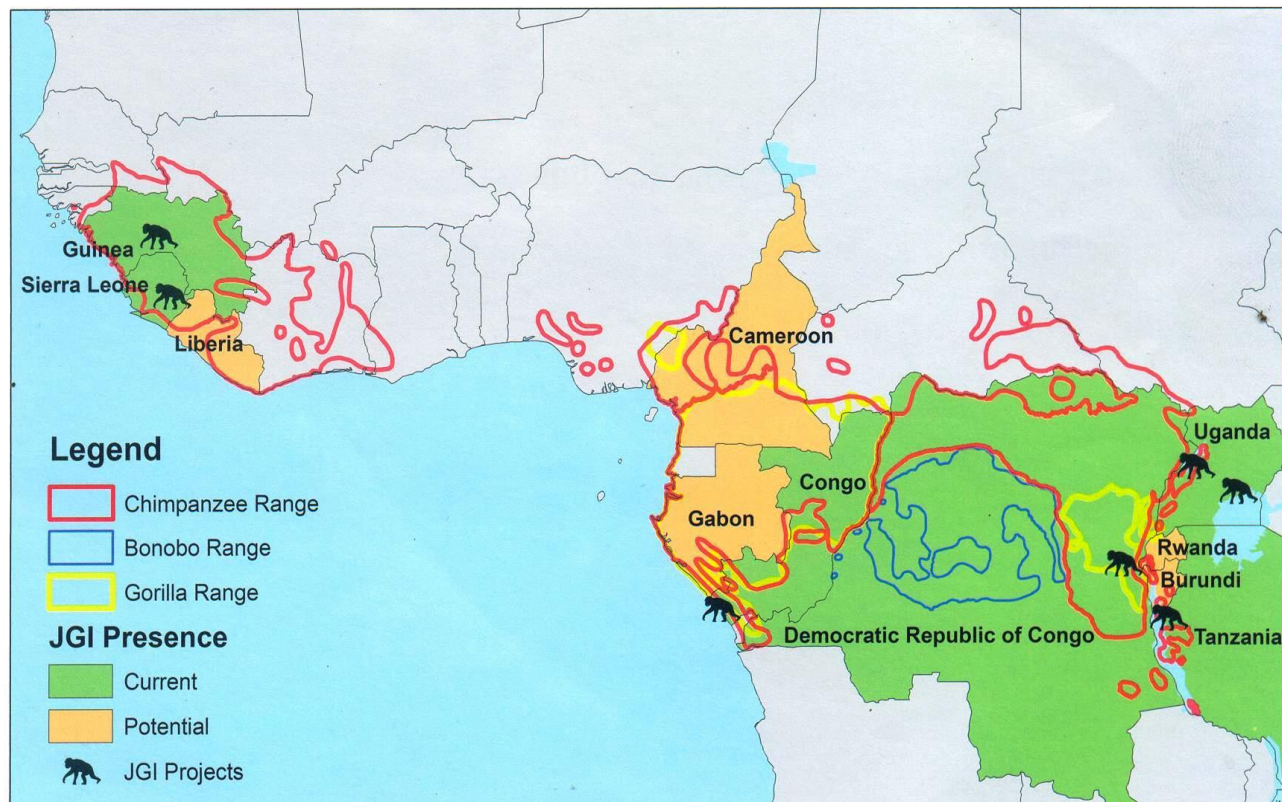
FOR WILDLIFE RESEARCH, EDUCATION AND CONSERVATION

JGI in Africa



the Jane Goodall Institute

African Great Ape Ranges and JGI Presence



500 250 0 500 Kilometers



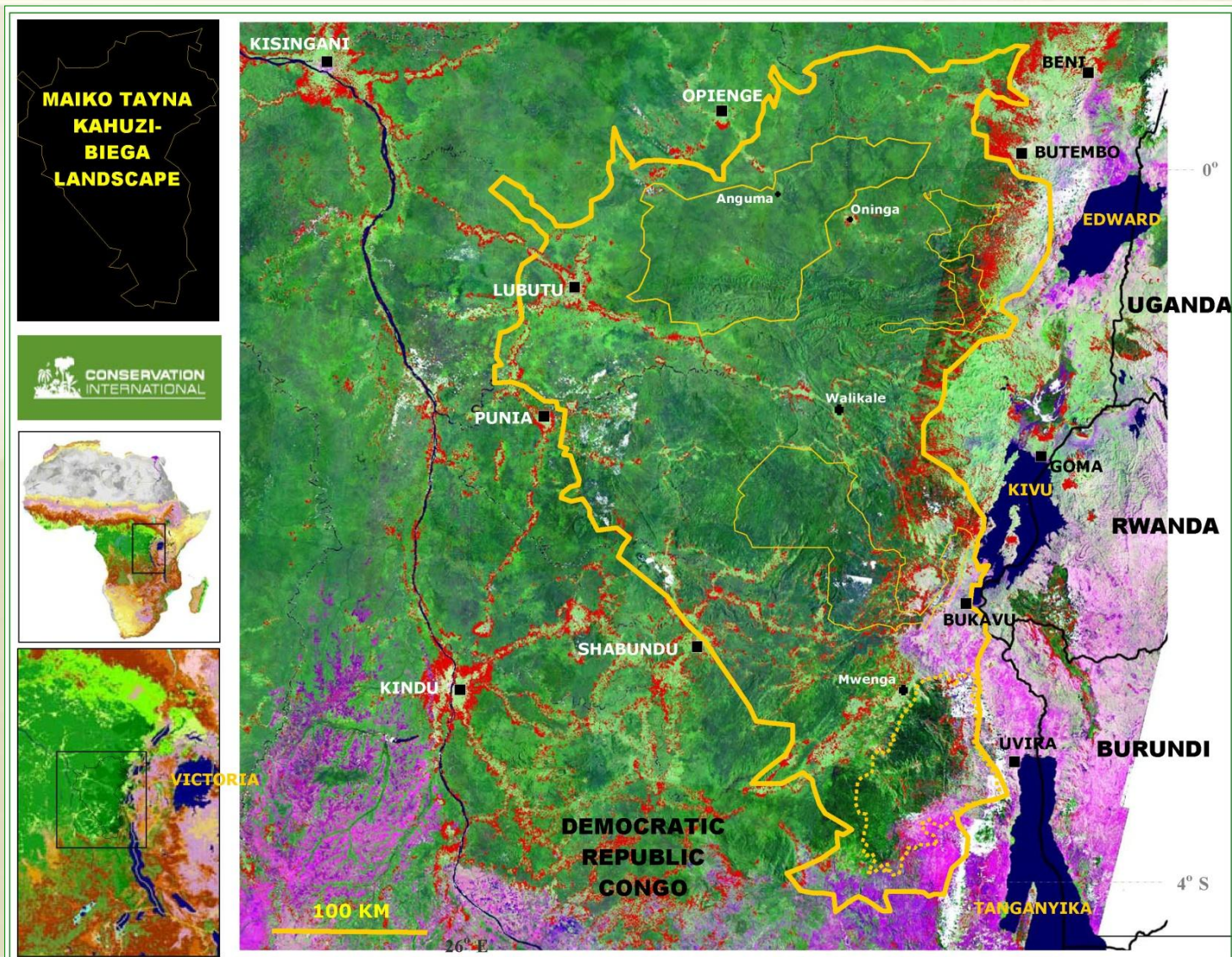
Map produced by Lilian Pintea, The Jane Goodall Institute
Data Source: Great Ape Ranges - GRASP, WCMC



the Jane Goodall Institute

FOR WILDLIFE RESEARCH, EDUCATION AND CONSERVATION

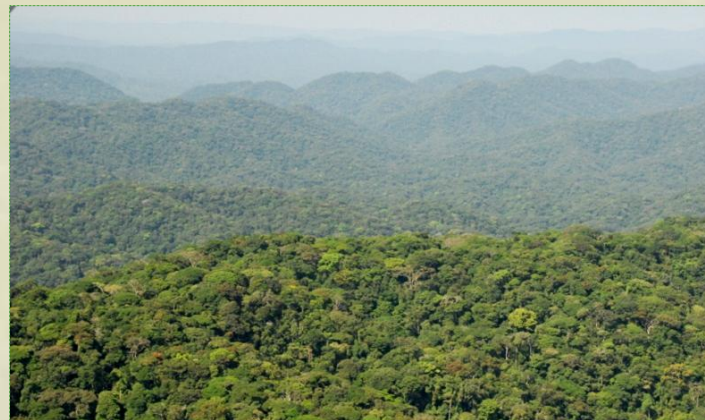
JGI DRC initial working area





Landscape Overview

- 222,000 sq km
- Rich in biodiversity/endemic species
- 90% of Eastern Lowland grauer Gorilla range
- Estimated 40,000 wild chimpanzees (90% eastern chimpanzee population)
- 80% of intact forest
- Availability of fresh water sources





Main threats

- Insecurity
- Illegal mining and hunting





the Jane Goodall Institute

FOR WILDLIFE RESEARCH, EDUCATION AND CONSERVATION

Main threats

- Hunting
- Deforestation





Challenges

- Insecurity
- Lack of infrastructure
- Inadequate government support





JGI activities in the landscape



- Education
- Health/Family planning
- Access to clean water
- Facilitating chimpanzee rescue
- Support to the protected areas
- Alternatives to protein - livestock project
- Coordination of the research results (socio-economic and apes)



Environmental Education

- 98 schools reached
- 16,207 primary school children sensitized
- 74 teachers and educators trained
- More than 4,000 education materials produced
- 54 Roots & Shoots clubs established





Sensitization Activities

- Through radio programs, theater plays, community meetings, billboards on the main roads
- Coordinating EE program at landscape level





Rehabilitation of health infrastructure

Before



- 6 clinics renovated - 42,000 people
- Rainwater collection system built
- Incinerator for waste

After





Reproductive Health/Family Planning

- Access to methods (condom, pills, depo provera, cycle beads, IUD)
- Partnership with Ministry of Health (71 health facilities)
- Informing communities (theater, posters, radio programming and +600 CBDAs)





Family Planning

- Training of health care providers and CBDA's (55 training sessions, 1,300 providers trained)
- Infection prevention supplies
- 163,900 women are expected to be reached this year





Access to clean water

- Improving health of communities
- Reducing the distance for accessing water
- Spring protection committees
- 9 springs protected





Supporting conservation efforts

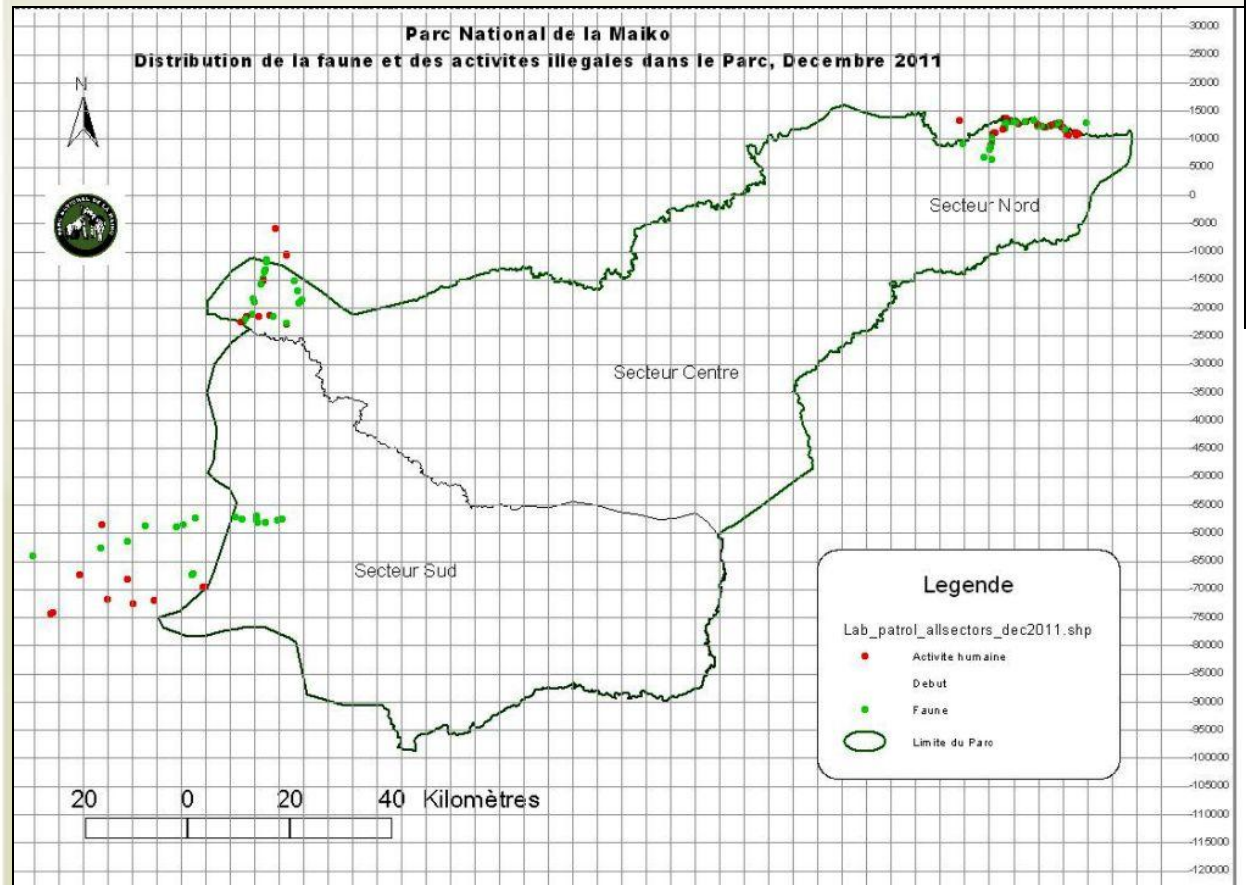
- Providing food rations for patrols
- Contributing to salaries
- Supporting with equipment





Supporting conservation efforts

- data on wildlife and illegal activities





Chimpanzees rescue

- To address the illegal hunting of meat and trafficking of baby chimpanzees we partner with:
 - local NGO and wildlife authorities
 - Lwiro Rehabilitation Center for primates





Conservation Action Plan

- Process initiated by the Congolese government (MECNT & ICCN)
- 15 great apes experts, conservation NGO's
- Security services and government at every level





Conservation Action Plan





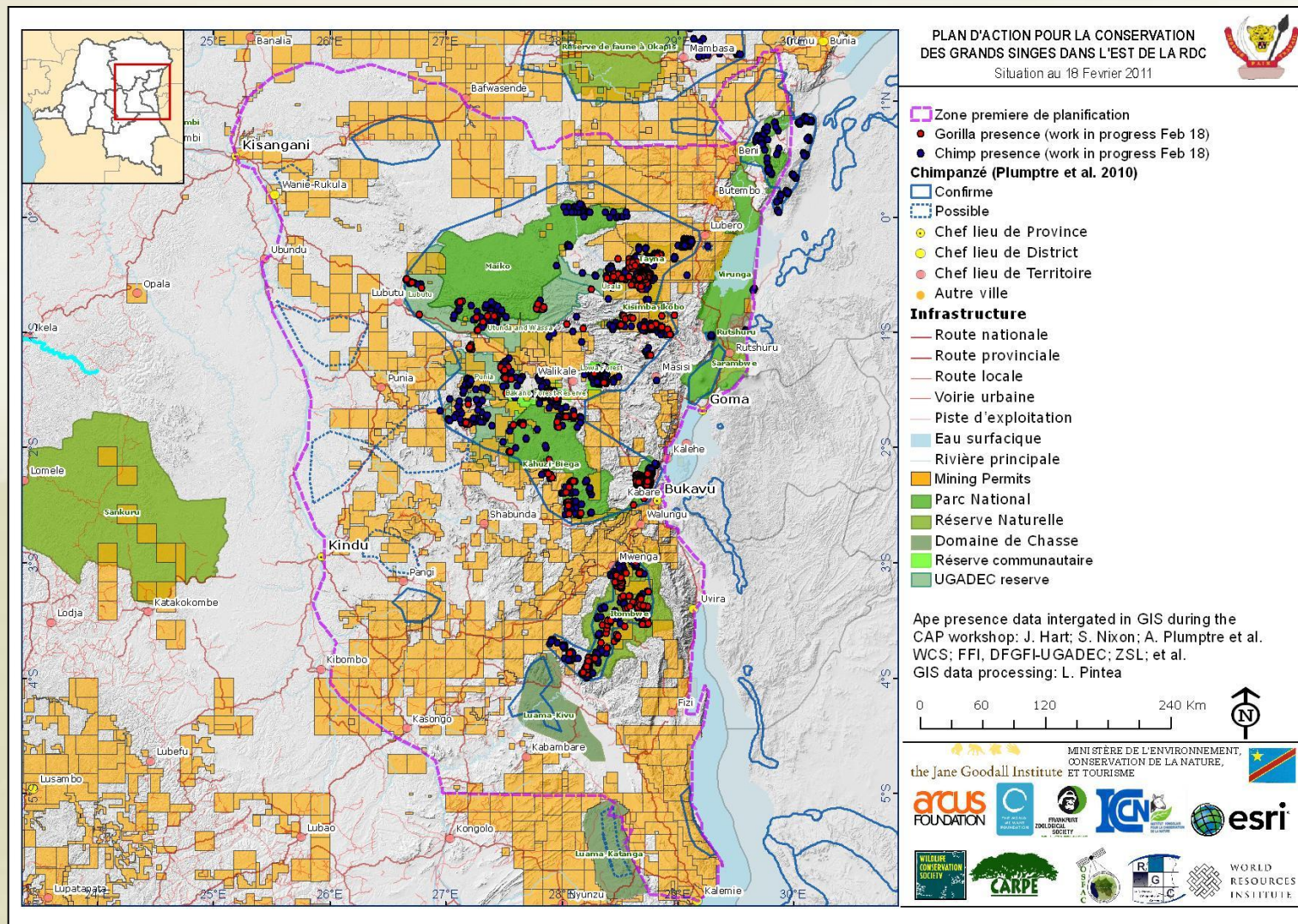
Conservation Action Plan

- Identifying the threats - hunting, mining, deforestation





Conservation Action Plan





Conservation Action Plan

- **Defining strategies:**
 - Assessment of priority population of Great Apes
 - Sensitization and involvement of communities in conservation
 - Consolidation of territory management
 - Strengthen protected areas, community forests and sanctuaries
 - Application of laws in protected areas and intervention zones





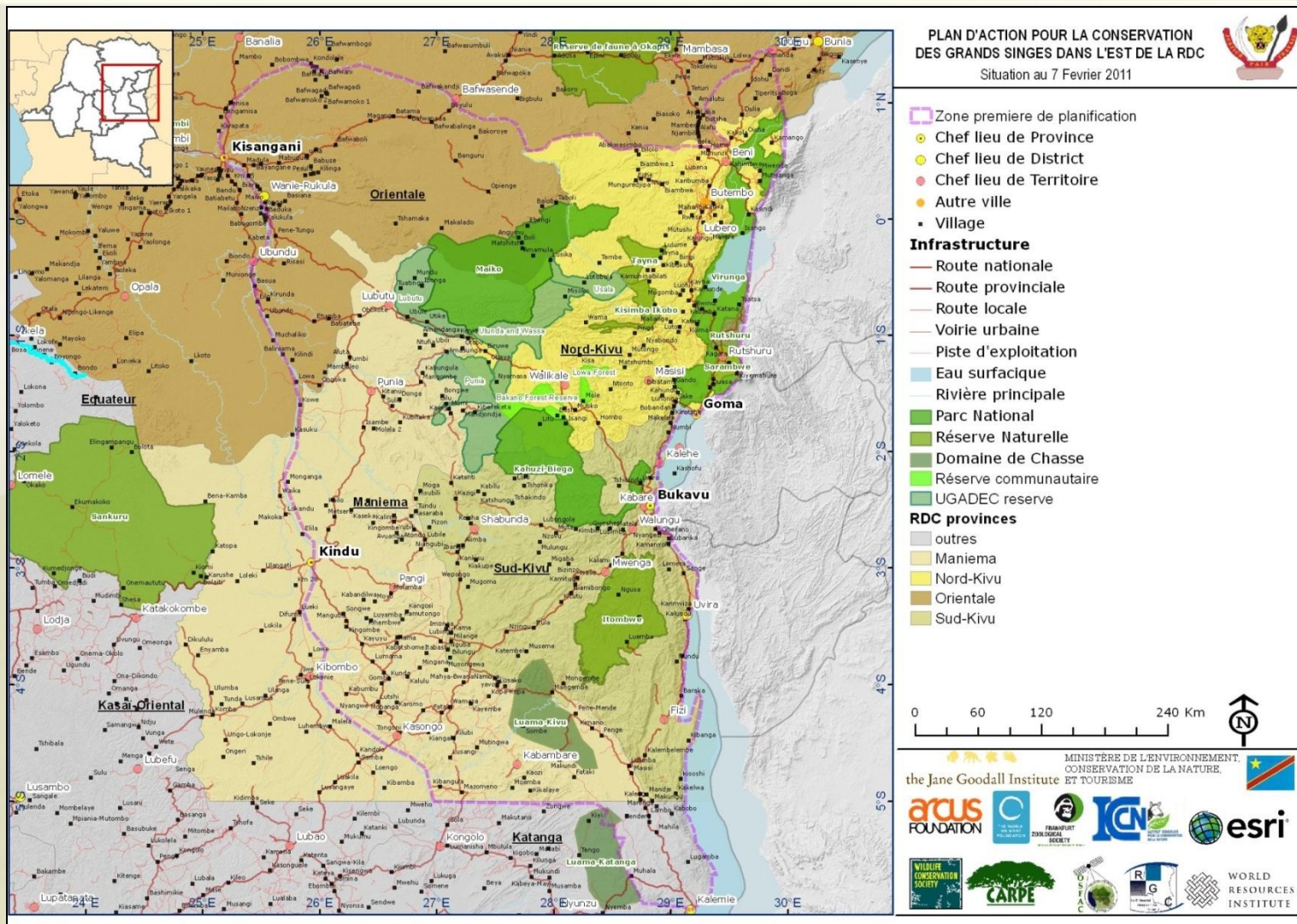
Conservation Action Plan

- Continuous process of searching accurate information and data on apes
- Meeting with stakeholders to review the document
- Endorsment of the government
- JGI play a leading role in coordination of Apes Conservation effort





Conservation Action Plan





Lessons learnt

- Achieving program results in a conflict area is possible
- Partnership with government and the local community is key for longer term impact
- Community ownership & governance of activities enables successful implementation
- Use of new technology is improving the quality of our work
- Combining & coordinating NGO strengths leads to better outcomes





Donors & Partners

- DRC Ministry of Environment
- UGADEC
- Institut Congolais pour la Conservation de la Nature
- Arcus Foundation
- USAID/CARPE
- Conservation International
- JGI USA, JGI Canada, JGI Australia & JGI Spain
- Dian Fossey Gorilla funds International
- Mountain Gorilla Veterinary Project
- Disney Wildlife Conservation Fund
- Wildlife Conservation Society
- Fauna & Flora International
- Zoological Society of Frankfurt
- Zoo's Victoria



the Jane Goodall Institute

FOR WILDLIFE RESEARCH, EDUCATION AND CONSERVATION

THANK YOU

