

# The Africa Biodiversity Collaborative Group



AFRICA BIODIVERSITY COLLABORATIVE GROUP

# Who we are

- ABCG is a community of international conservation and development practitioners who work together to translate their knowledge into practical tools and approaches in order to address high priority conservation challenges, inform policy, and integrate biodiversity conservation into international development agendas.



**AFRICA BIODIVERSITY COLLABORATIVE GROUP**

# Member Organizations



the Jane Goodall Institute



**WORLD**  
**RESOURCES**  
**INSTITUTE**



**AFRICA BIODIVERSITY COLLABORATIVE GROUP**

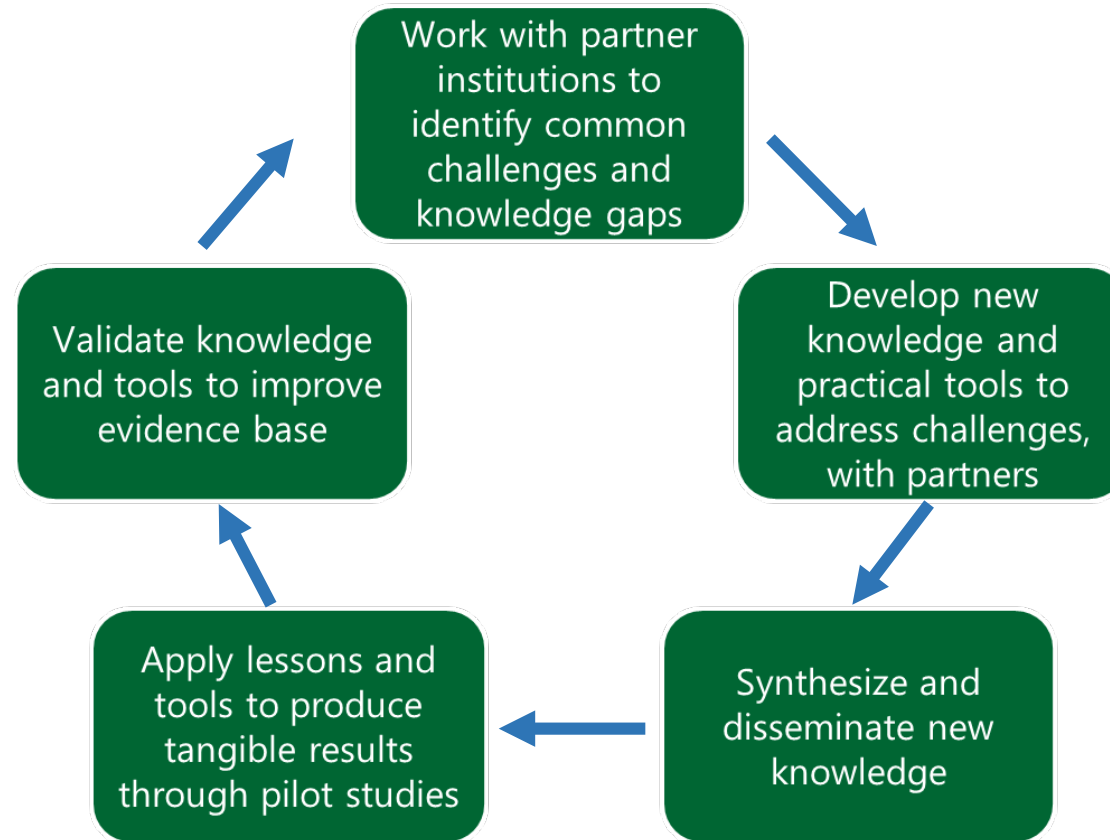
# Purpose and Mission

- Increase our collective conservation impact
- Advance understanding of critical biodiversity conservation challenges and their solutions in sub-Saharan Africa.



AFRICA BIODIVERSITY COLLABORATIVE GROUP

# Integrated Approach



# Thematic working groups

1. Conservation Planning:
  - Land Use Management
  - Global Change Impacts
  - Community-based Forest Management
2. Global Health Linkages to Biodiversity Conservation:
  - Population, Health and Environment
  - Freshwater Conservation and WASH
  - Gender Integration



AFRICA BIODIVERSITY COLLABORATIVE GROUP

# Connect

[www.abcg.org](http://www.abcg.org)



Join our listserv!



**AFRICA BIODIVERSITY COLLABORATIVE GROUP**

# Contact

Rebecca Goodman, Director

Washington, DC

[rgoodman@abcg.org](mailto:rgoodman@abcg.org)

Evelyn Namvua, Communications and Engagement Specialist

Nairobi, Kenya

[enamvua@abcg.org](mailto:enamvua@abcg.org)



**AFRICA BIODIVERSITY COLLABORATIVE GROUP**





*For the Greater Mara*

Daniel Sopia  
CEO, MMWCA



**Scaling community Conservation Model in the  
Maasai Mara**





- The Mara-Serengeti Ecosystem in Tanzania & Kenya contains an estimated **40% of Africa's remaining large mammals.**
- The Greater Maasai Mara - despite making up only .05% of Kenya's land mass - contains **25% of its large mammals.**
- It is home to the annual **wildebeest migration**, one of the seven New Wonders of the World.

But, the Mara Ecosystem has lost almost 60% of its wildlife over the last 40 years.

Despite its importance, over **half of the area is unprotected**, leaving animals vulnerable to habitat loss, fencing for agriculture or alternative land use and human-wildlife conflict.



- The Greater Maasai Mara is also home to hundreds of thousands of Maasai, traditional pastoralists with a proud culture, who lived harmoniously with wildlife for generations.
- Livestock is both an economic and social factor.
- Youth ages 18-35 face an 80% unemployment rate.



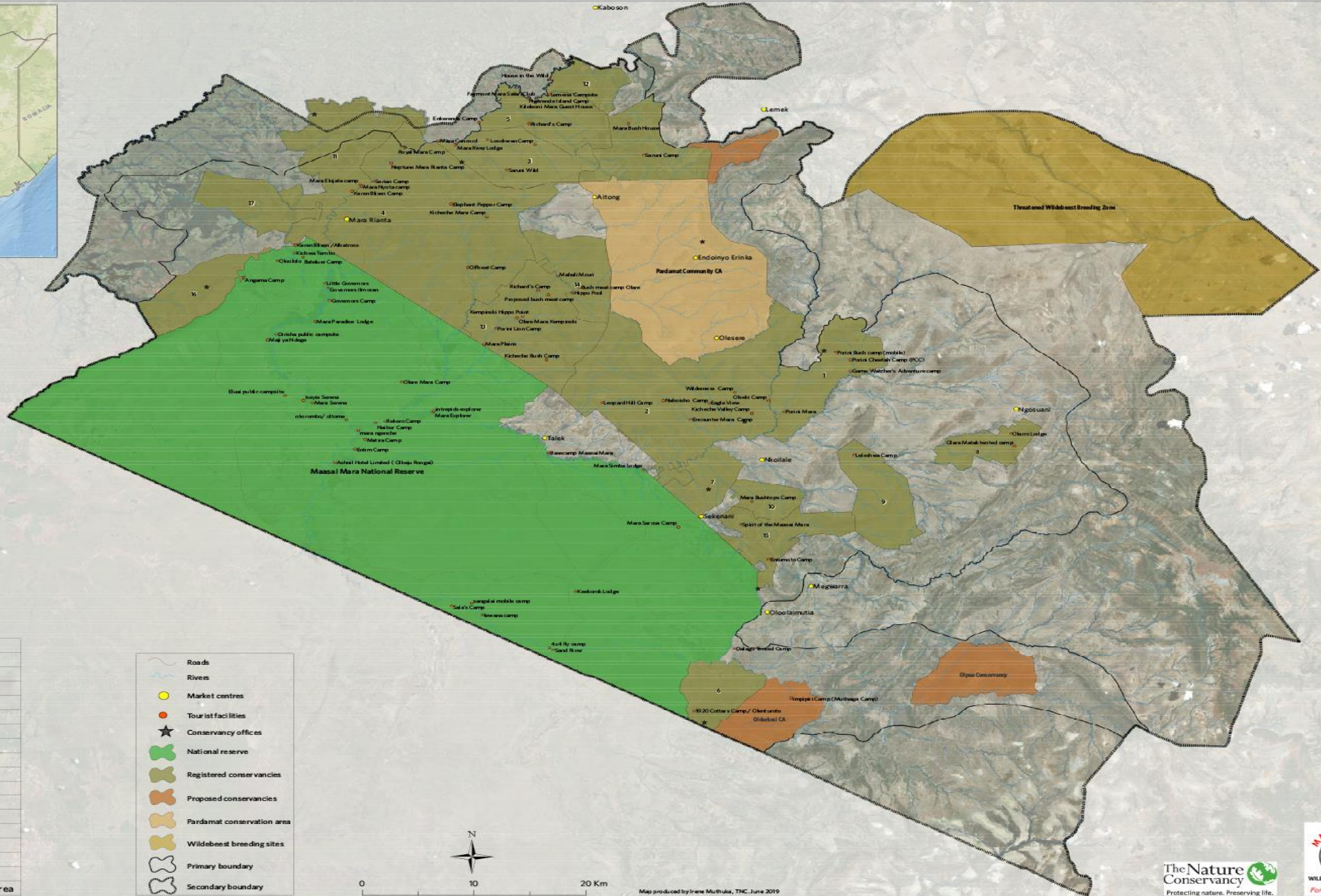
A cheetah is shown in a savanna setting, sitting on the ground and looking towards the right. The background is a blurred expanse of green and brown grass. A red horizontal band is overlaid across the middle of the image, containing the text 'Wildlife Conservancies'.

# Wildlife Conservancies



A **Conservancy** pools hundreds of individually owned land parcels into larger wildlife, tourism, and livestock management entities.

Each Conservancy is a legal entity governed through an equal partnership agreement between land owners and those leasing the use of their land, for which they receive a monthly payment.



Number	Conservancy Name
1	Oi Kinyei Conservancy
2	Naboisho Conservancy
3	Lemek Conservancy
4	Mara North Conservancy
5	Olchorro Oiroua Conservancy
6	Olderkesi Conservancy
7	Nashulai Maasai Conservancy
8	Olarro North Conservancy
9	Olarro South Conservancy
10	Isaaten Conservancy
11	Oloisikut Conservancy
12	Enonkishu Conservancy
13	Olare Orok Conservancy
14	Motorogi Conservancy
15	Siana Mara Conservancy
16	Maasai Moran Conservancy
17	Nyakweri Forest Conservation Area

- Roads
- Rivers
- Market centres
- Tourist facilities
- Conservancy offices
- National reserve
- Registered conservancies
- Proposed conservancies
- Pardamat conservation area
- Wildebeest breeding sites
- Primary boundary
- Secondary boundary



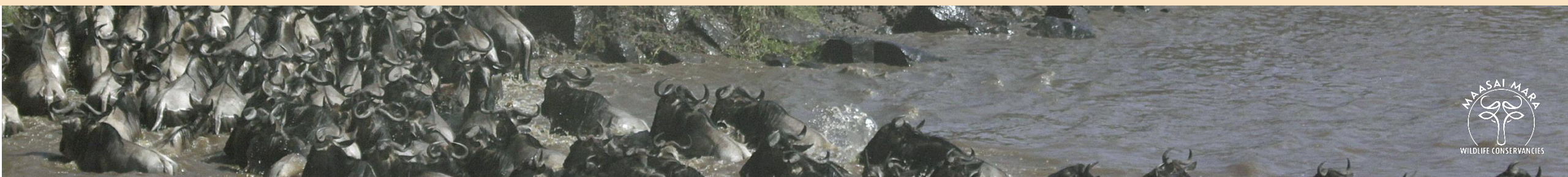
Map produced by Irene Muthika, TNC, June 2019







# About MMWCA



# History

- In 2012, key stakeholders came together to form the **Kenya Wildlife Conservancies Association (KWCA)**, now Kenya's leading voice on wildlife conservation with 12 regional associations.
- Following the formation of KWCA, the Maasai Mara Wildlife Conservancies Association (MMWCA) was created in 2013 to serve as an umbrella organization for existing and future Mara conservancies.



**USAID**  
FROM THE AMERICAN PEOPLE

The Nature  
Conservancy 

**USAID**

**In 2015, MMWCA was awarded a pivotal \$4.1 Million grant from USAID, to be implemented by The Nature Conservancy from 2015-2018.**

**This allowed the young organization to build strong internal capacity while quickly increasing activities.**



# Activities



Sustaining and  
Creating Mara  
Conservancies



Conservancy  
Governance and  
Transparency



Community Advocacy  
and Awareness



Local Capacity  
Building



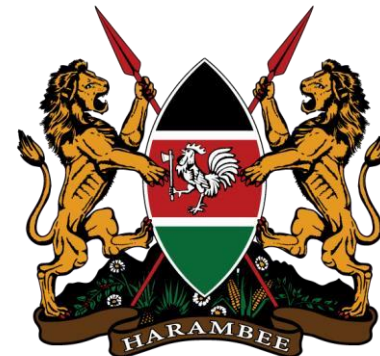
Sustainable Revenue  
Development



Gender  
Education

# Mandate & Partners

MMWCA is the only organization in the history of the Maasai Mara that has the engagement and the remit to spearhead an all-inclusive strategy for the betterment of the ecosystem and its stakeholders. This includes working closely with local, regional, and National organizations, such as:





# Select Programs





**USAID**  
FROM THE AMERICAN PEOPLE

## *Effective Biodiversity Conservation and Livelihood Improvement by Community Conservancies in the Maasai Mara Region*

- Creating an integrated and sustainable conservancy governance model;
- Developing a well-established Maasai Mara Wildlife Conservancy Association (MMWCA) to provide leadership and coordination for the conservancies.
- \$4.1 Million Budget; September 2015 - September 2018 (no-cost extension through mid 2019)





**USAID**  
FROM THE AMERICAN PEOPLE



## *Pardamat Conservation Area*

- The formation and scaling of a new, dual-use Conservancy model where humans, wildlife, and livestock live together in harmony.
- Securing land for the free movement of wildlife by removing fences.





## *Mara Vocational Training Program*

- Brings together and strengthens 7 existing vocational training institutions
- Will provide 1,800 youth with critical skill certifications in tourism, agriculture, natural resource management, wildlife conservation, and ICT and business management.





## *Taking The Bull by ItsHorns*

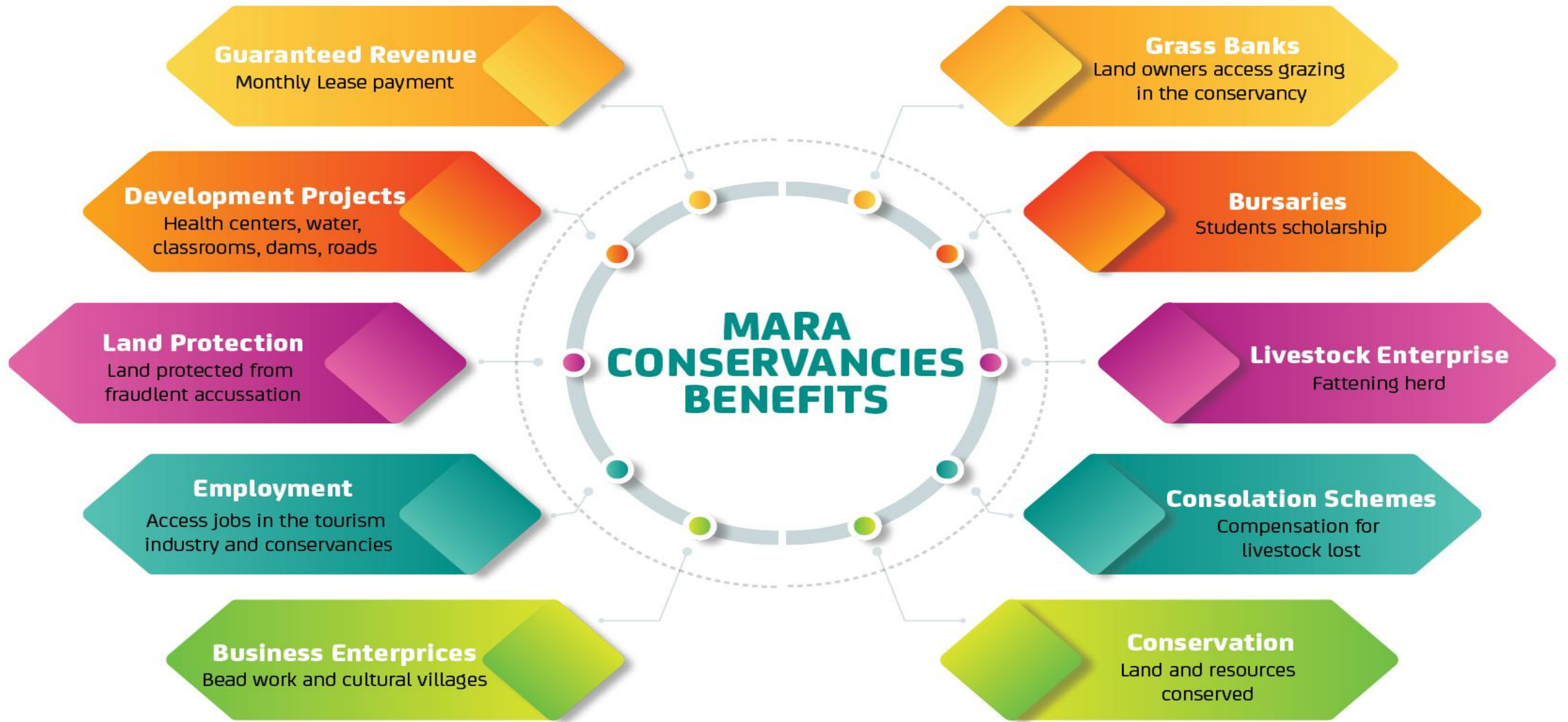
- A single, consolidated management to work in a coordinated, efficient manner at the landscape level across multiple Mara Conservancies.
- A Sustainable Livestock Initiative, where livestock will be fatter and healthier, as well as effective rangeland management development.
- \$1.5 Million Budget; January 2017 - December 2019.





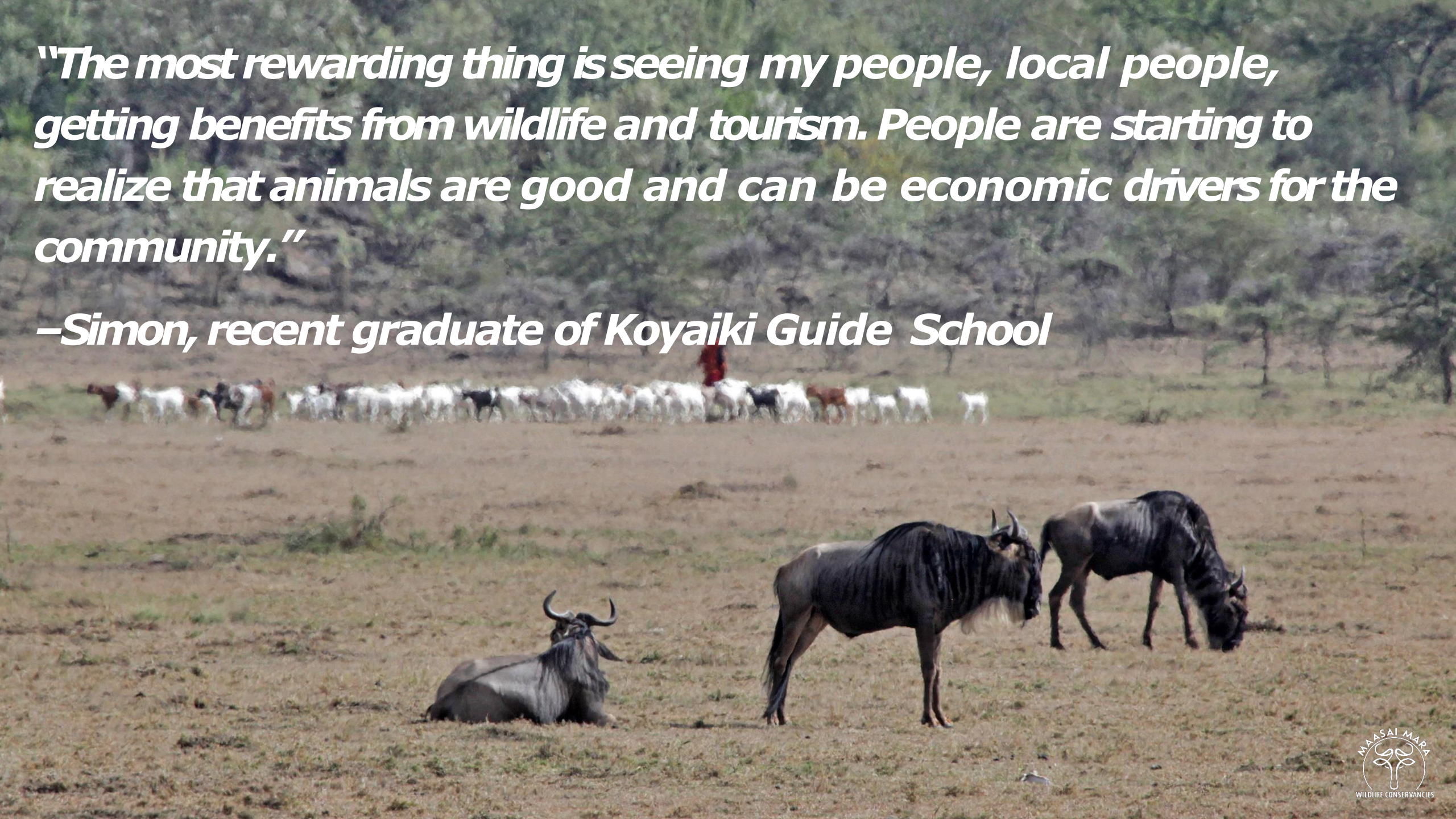
Our Impact





***“The most rewarding thing is seeing my people, local people, getting benefits from wildlife and tourism. People are starting to realize that animals are good and can be economic drivers for the community.”***


***–Simon, recent graduate of Koyaiki Guide School***







**+** **46%**  
TOTAL AREA

**14%**   
HIGHER LION DENSITY

  
SECURED WILDLIFE CORRIDORS

**57.6**  **KM**  
ROADS REPAIR  
& MAINTENANCE

# What's Next





# Priorities



Using research to continue opening space for wildlife



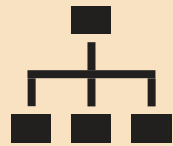
Diversify Conservancy revenue streams



Improve awareness of and support for Conservancies



Catalyze environmental and social pilot projects



Strengthen institutional internal capacity and collaboration



# The One Mara Research Hub

*“An Engine for Sustainable  
Conservation”*



*For the Greater Mara*



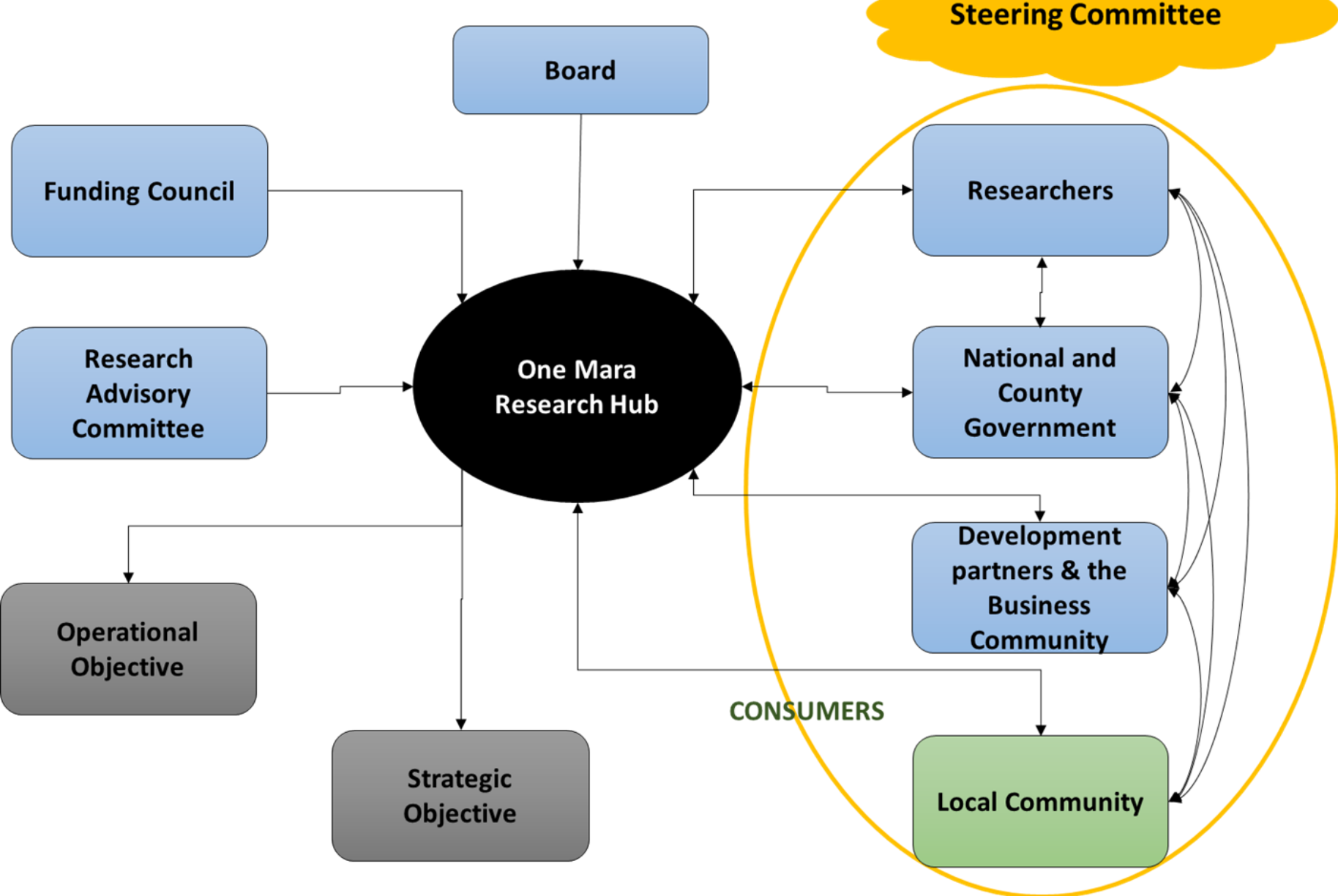
# What is the One Mara Research Hub?

---

A collaborative of key conservation stakeholders in the Greater Mara Ecosystem (GME) who have come together to coordinate research with the aim of dramatically increasing the scale and pace of conservation interventions in this critical ecosystem.



# Proposed Structure



For the Greater Mara

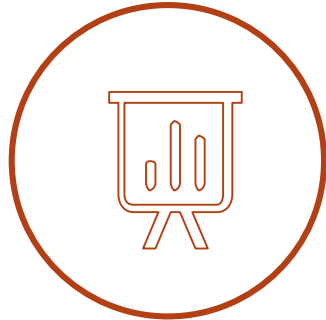


# Research Hub Objectives

---



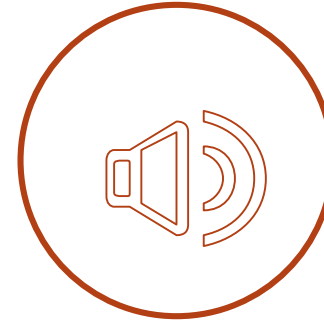
**Provide a platform for knowledge exchange and data sharing in order to influence county and national policies.**



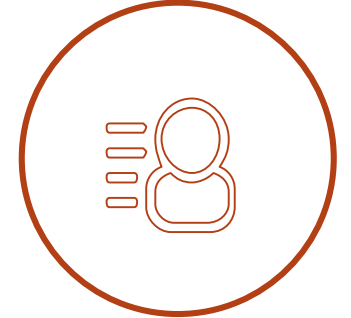
**Develop and facilitate implementation of a Greater Mara Research Strategy.**



**Communicate scientific and conservation outputs.**



**Build STEM capacity of the local communities.**



**Organise research meeting and annual Mara conference.**

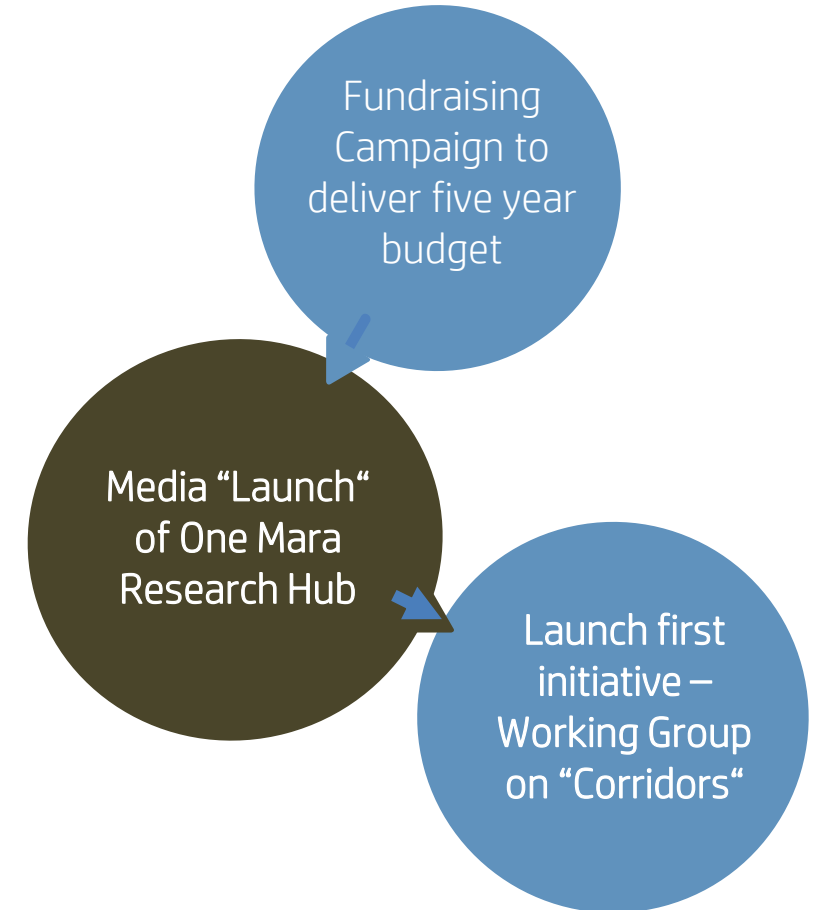
# Progress

---

- Kenya Wildlife Trust funded as implementing partner to lead the initiative.
- First symposium held on July 2019 – “Fencing in the Mara.”
- Research Coordinator appointed.
- Steering Committee selected.
- Ongoing database compilation of existing Mara research.

# Next Steps

---



# Thank you!

