



Equatorial Guinea:

Emerging Frontier of
Conservation &
Development

CI and ABCG Presentation

Jan. 14, 2011
CI Headquarters
Arlington, VA

Presentation Outline

- Introduction to Equatorial Guinea (EG)
- EG as an Emerging Frontier: Main Concerns for Conservation and Development
- CI in EG: New Mission and Priorities
- CI and Partners: Current Work
- Future Plans



Presentation Outline

- Introduction to Equatorial Guinea (EG)
- EG as an Emerging Frontier: Main Concerns for Conservation and Development
- CI in EG: New Mission and Priorities
- CI and Partners: Current Work
- Future Plans



Introduction: Geography

- Borders with Cameroon and Gabon
- 28,050 km² spread over mainland and archipelago of islands
- Bioko and Annobon Islands are volcanic; highest peak: 9,876ft.



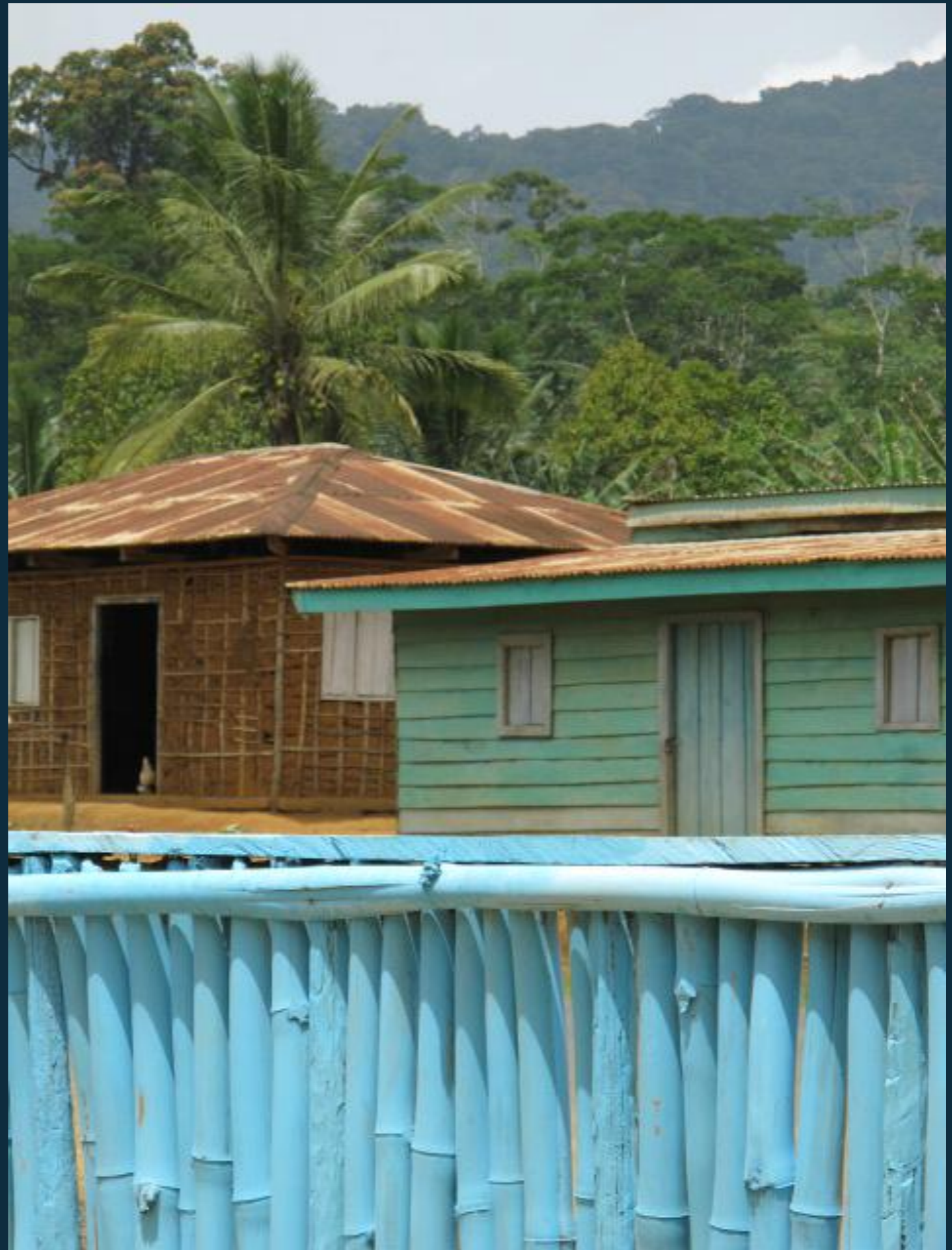
Introduction: Wildlife

- Fauna of special interest include the forest elephant, western lowland gorilla, central chimpanzee, mandrill, Bioko Island drill, leopard, golden cat, African manatee, Goliath frog, long-snouted crocodile, red river hog, grey-necked rockfowl, and four species of sea turtle
- For its size, EG may be home to more species of primates than anywhere else in the world
- Of Bioko's 11 primate species, 7 are threatened endemic subspecies; Pennant's red colobus has been listed as one of the 25 rarest primates in the world



Introduction: People and Government

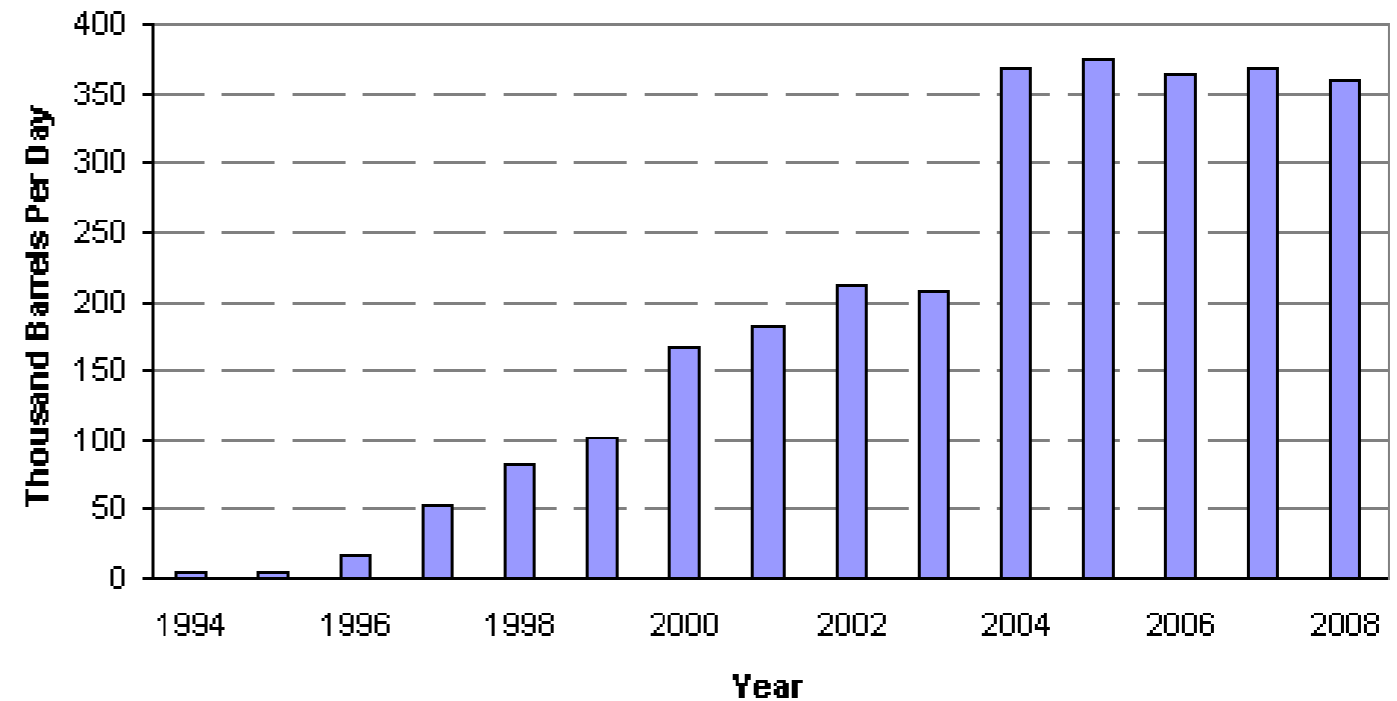
- Population: 633,441
- Main ethnic groups: Fang (majority), Bubi, Annobonese, Ndowe, Kombe, Bujeba
- Independence from Spain in 1968
- First president, Macias, was overthrown in 1979
- Current president: Teodoro Obiang Nguema Mbasogo



Introduction: Economy

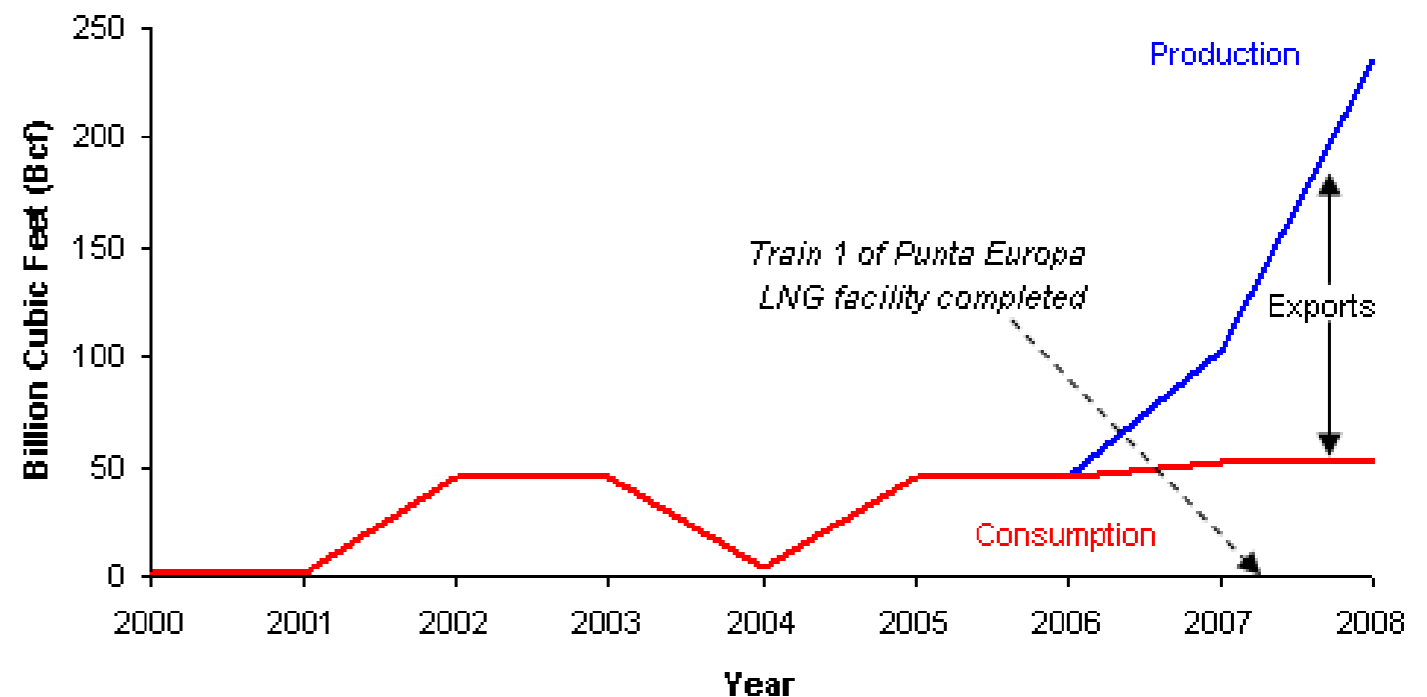
- GDP: \$22.86 billion
- Per capita GDP is #28, just above Denmark, Belgium and Sweden
- Main natural resources: petroleum, natural gas, timber
- Industry: 92.6% of GDP; Agriculture: 2.7%
- “2020” Development Plan → diversification

Equatorial Guinea's Oil Production, 1994-2008



Source: EIA

Equatorial Guinea Natural Gas Production and Consumption, 1998-2008



Source: EIA

Presentation Outline

- Introduction to Equatorial Guinea (EG)
- EG as an Emerging Frontier: Main Concerns for Conservation and Development
- CI in EG: New Mission and Priorities
- CI and Partners: Current Work
- Future Plans





Main Concerns:

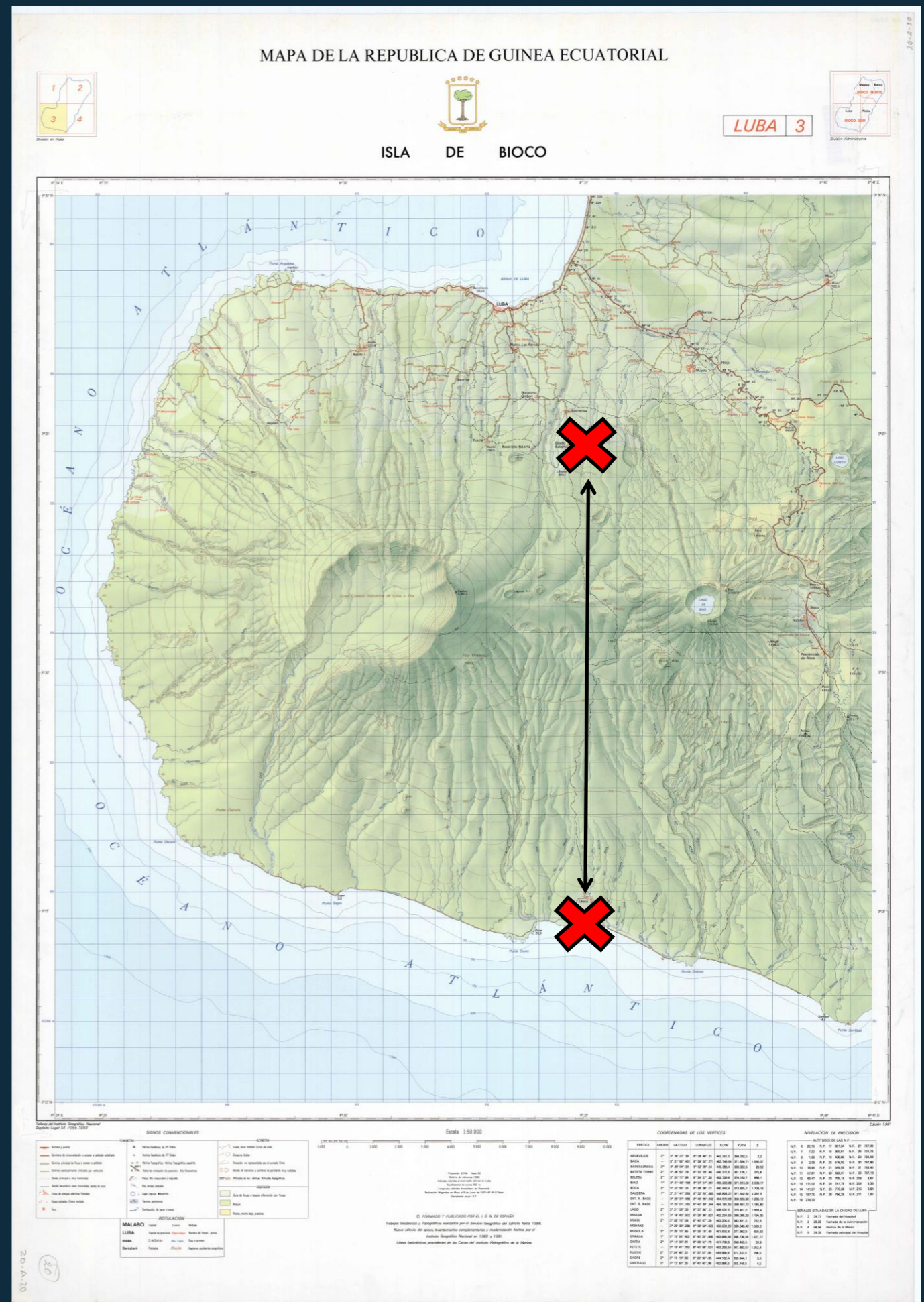
- Rapid infrastructure development with no environmental impact assessment
- Rural poverty still widespread
- Weak legislation for PA management
- Lack of funding for fieldwork and legal enforcement within EG Government
- Unsustainable hunting levels with lack of viable alternatives (urban protein and rural jobs); could intensify in future with more urban wealth, fewer rural construction jobs and a country-wide improved road network

- Of Bioko's 11 species of primates, 9 are endangered or vulnerable (at species or subspecies level) and 7 are endemic subspecies, including the Pennant's red colobus

- Bioko's southern beaches are an important nesting site of sea turtles

- Annual scientific census carried out during expedition of Bioko

Biodiversity Protection Program (BBPP)



Presentation Outline

- Introduction to Equatorial Guinea (EG)
- EG as an Emerging Frontier: Main Concerns for Conservation and Development
- CI in EG: New Mission and Priorities
- CI and Partners: Current Work
- Future Plans



CI's New Mission and Priorities:

Building upon a strong foundation of science, partnership and field demonstration, CI empowers societies to responsibly and sustainably care for nature, our global biodiversity, for the well-being of humanity.

CI focuses its marine and terrestrial efforts on six global initiatives: climate change, fresh water security, food security, human health, cultural services and biodiversity protection.



CI's New Mission and Priorities:

Building upon a strong foundation of science, partnership and field demonstration, CI empowers societies to responsibly and sustainably care for nature, our global biodiversity, for the well-being of humanity.

CI focuses its marine and terrestrial efforts on six global initiatives: climate change, fresh water security, food security, human health, cultural services and biodiversity protection.





Green Economies

- = “a development model that fosters enduring contributions of nature to human well-being, by incorporating the values provided by ecosystem services and biodiversity and their conservation into decision-making”
- Development plan “Horizonte 2020”: EG aims to become, by 2020, a country of dynamic prosperity with a solid social cohesion and policies that improve the lives of its citizens, to become a dynamic player in regional diplomacy, and a model country for Africa in making the transition from oil to a diversified economy



Main areas of diversification:

- **Energy**
Including natural gas, hydroelectricity, solar, biofuels
- **Fisheries**
9/10 of EG's territory is marine
Fish stocks allegedly still high
- **Agriculture**
Working with Chinese consultants
- **Services**
Including tourism (ecotourism and tourism management) and financial services



Main areas of diversification:

- **Energy**
Including natural gas, hydroelectricity, solar, biofuels
- **Fisheries**
9/10 of EG's territory is marine
Fish stocks allegedly still high
- **Agriculture**
Working with Chinese consultants
- **Services**
Including tourism (ecotourism and tourism management) and financial services

→ There's still time to work with national partners towards a Green Economy for 2020

Presentation Outline

- Introduction to Equatorial Guinea (EG)
- EG as an Emerging Frontier: Main Concerns for Conservation and Development
- CI in EG: New Mission and Priorities
- CI and Partners: Current Work
- Future Plans



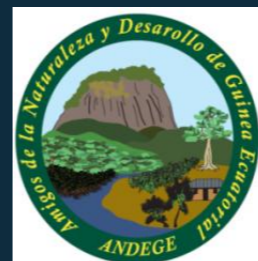


CI and Partners: Climate Change and REDD+



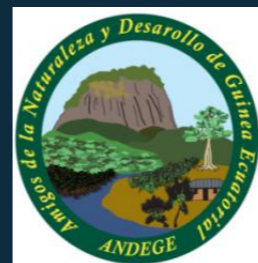
Climate/REDD+ Capacity Building

- In Sept. 2010, CI held a 3-day seminar in Bata on climate change and REDD+ to introduce concepts and kickstart a REDD+ Readiness process for EG
- Nearly 50 people attended, representing officials from Ministries, INDEFOR-AP, UNGE and CICTE, as well as NGO representatives and community leaders
- A 1-day follow-up meeting was held in a smaller group to establish national REDD+ working group



Development of REDD+ Strategy

- In Oct. 2010, CI-EG hosted first meeting of national REDD+ working group in Bata
- Currently engaging working group members in consultancies, coordinated by previous and current climate change focal points, to produce reports that will facilitate the R-PP process
- Engaging in legal review of forestry sector under REDD platform, and drafting decree to gain official recognition of REDD+ working group





CI and Partners in EG: Food Security





Photo: Maria Grande Vega
Universidad Politécnica de Madrid



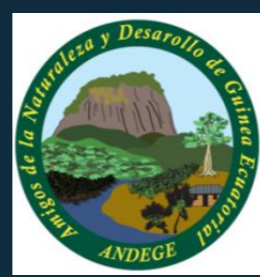
Photo: Jorge Orueta, SEO/BirdLife



Photo: Jorge Orueta, SEO/BirdLife

Economic Alternatives

- ZSL/Imperial College MSc thesis on “Drivers of change in hunter offtake and hunting strategies in Sendje, Equatorial Guinea” (David Gill, 2010)
- PhD project on “An Evaluation of Bushmeat Exploration in Pilo Basilé and a Plan for its Sustainable Management and Long-Term Monitoring (Maria Grande Vega)
- Strong links between unsustainable hunting levels and loss of protein for rural poor; collaborating with ZSL to facilitate their bushmeat alternatives project

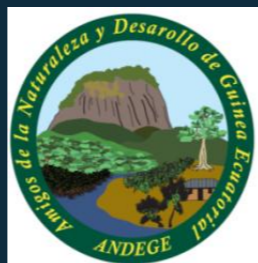


Economic Alternatives

- Objective: 5 different types of economic alternatives in 4 sites within CARPE LS1
- Implementing partner: ANDEGE
- Current status: 3 livestock-raising projects (2 x goats, 1 x pigs), 1 horticulture project, 1 agroforestry project up and running
- Evaluation currently underway by Zoological Society of London (ZSL)
- Many lessons learned...

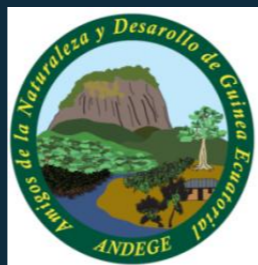


Photo: Gabriel Ngua, ANDEGE



Human-Elephant Conflict

- CI-EG and ANDEGE conducted 3-tiered interviews (regional government delegate, elephant hunters and villages most affected) in 4 districts around Monte Alen NP; plans to include additional districts
- Major HEC in some villages around PAs; current mitigation (drumming, smoke) ineffective; government-sanctioned culls are seen as only solution
- Currently assessing potential for pilot projects, including land-use change and mitigation, and funding needs





CI and Partners in EG: Biodiversity Protection

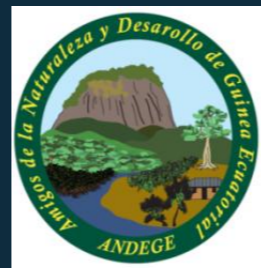
ESTATUS REGIONAL
Panthera pardus
CRITICAMENTE AMENAZADA
(Fuente : P. Henschel 2009)

ESTATUS REGIONAL
Caracal aurata
???

A man in a blue checkered shirt is pointing at the map on the screen. A water dispenser is visible in the foreground.

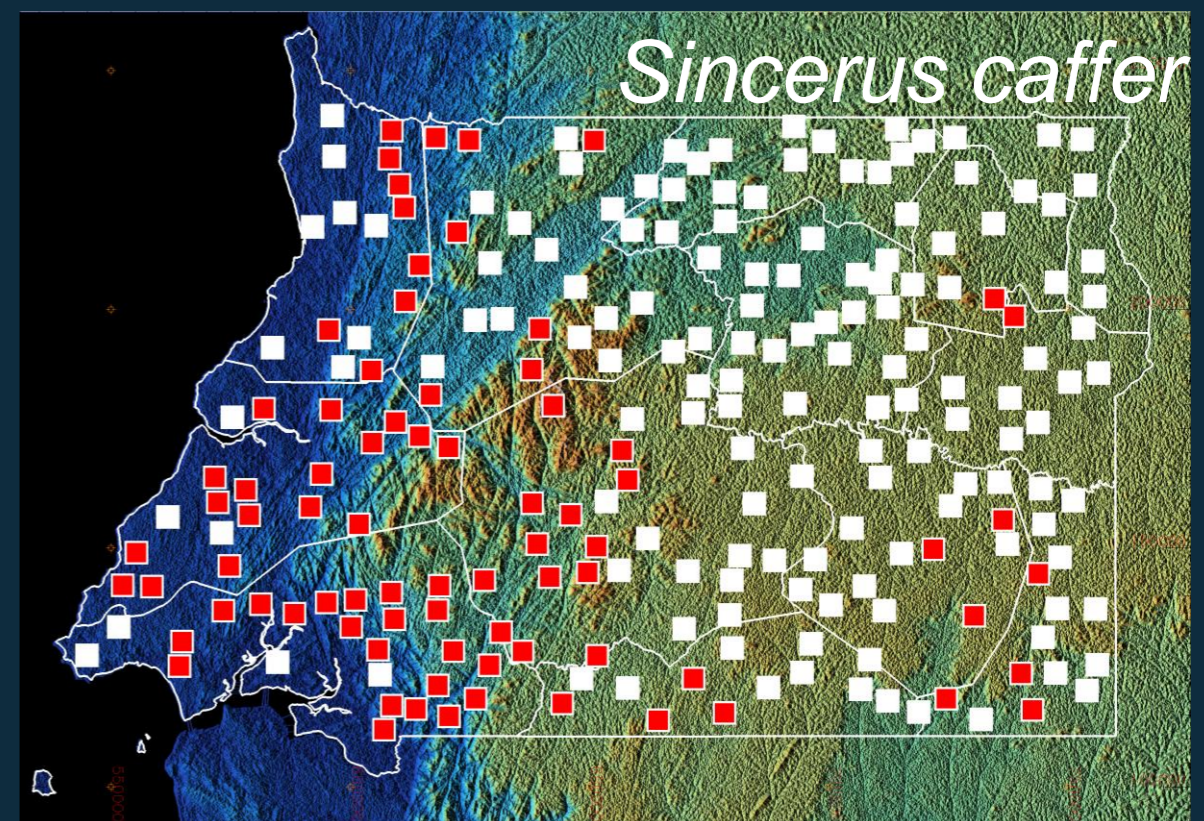
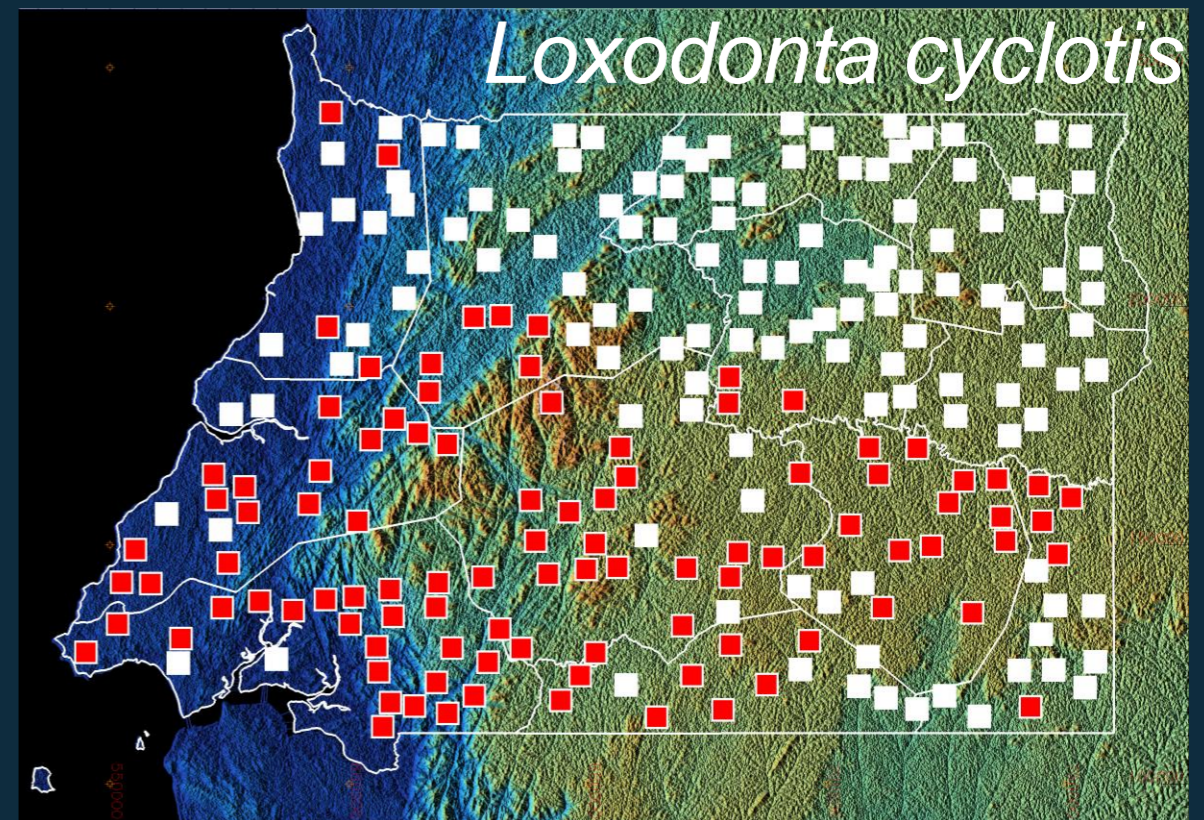
Wildlife Surveys

- Funding from USFWS to conduct first nationwide survey on apes and elephants
- Initial data collected by Chele Martinez Marti and ANDEGE in Panthera/USFWS/CARPE-supported project on status, distribution and threat of 17 mammalian species
- Data from this survey is now being analyzed; findings will be compared with data from our biological census to determine the best areas to focus conservation efforts in EG

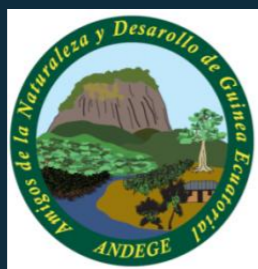


Wildlife Surveys

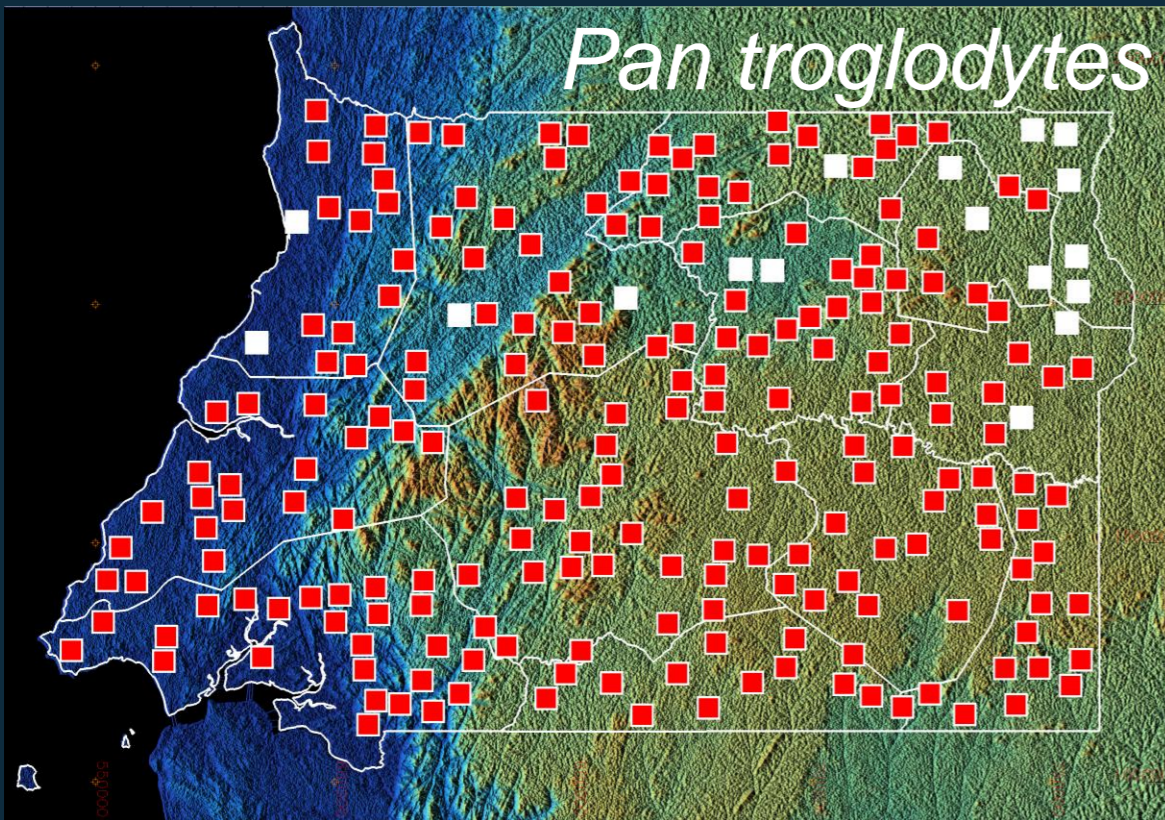
Martínez and Mang conducted semi-structured hunter interviews over 6 months, covering 225 sites across the mainland and producing presence-absence summary maps



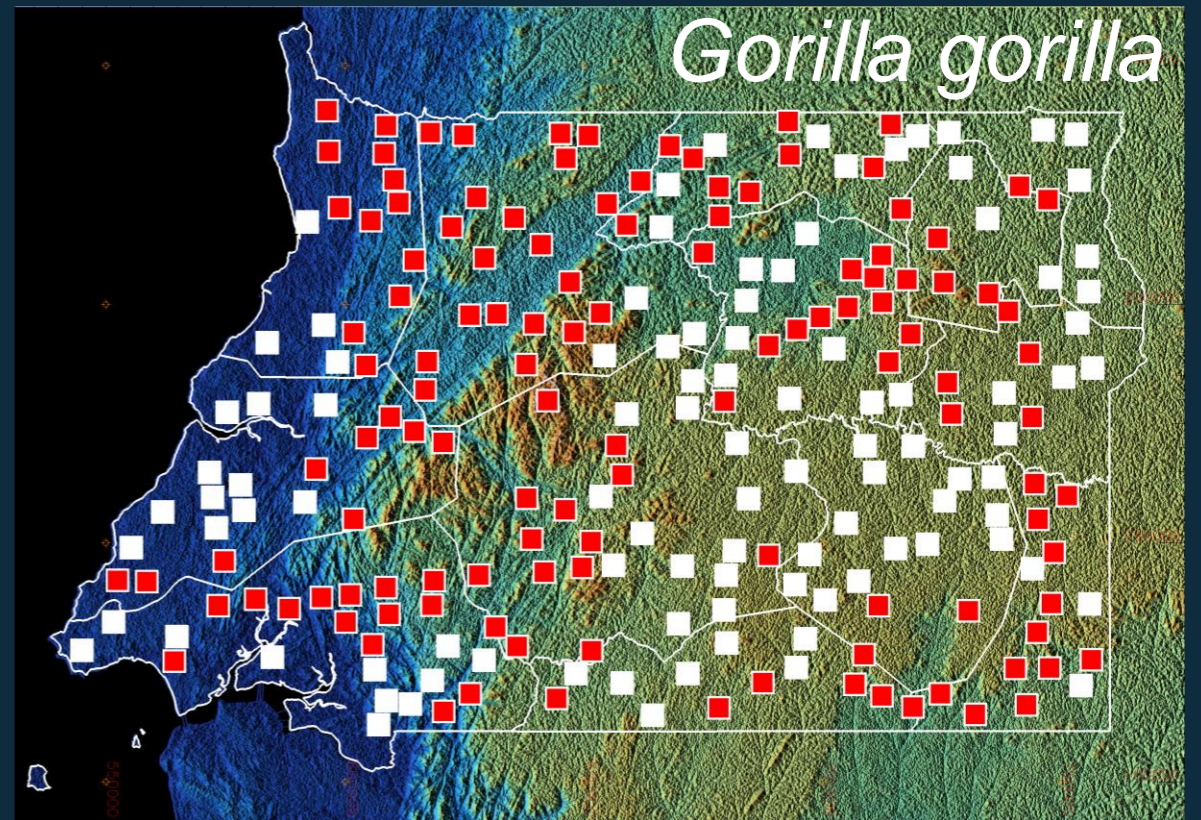
District	Surface (km ²)	Sampled area	%
Aconibe	1,108	425	38.4
Acurenam	3,254	350	10.8
Añisok	1,718	575	33.5
Bata	1,910	425	22.3
Cogo	2,241	625	27.9
Ebebiyin	1,095	225	20.5
Evinayong	4,338	675	15.6
Mbini	2,514	500	19.9
Micomeseng	2,037	425	20.9
Mongomo	1,415	225	15.9
Niefang	2,339	600	25.7
Nsoc Nsomo	811	175	21.6
Nsork	1,237	375	30.3



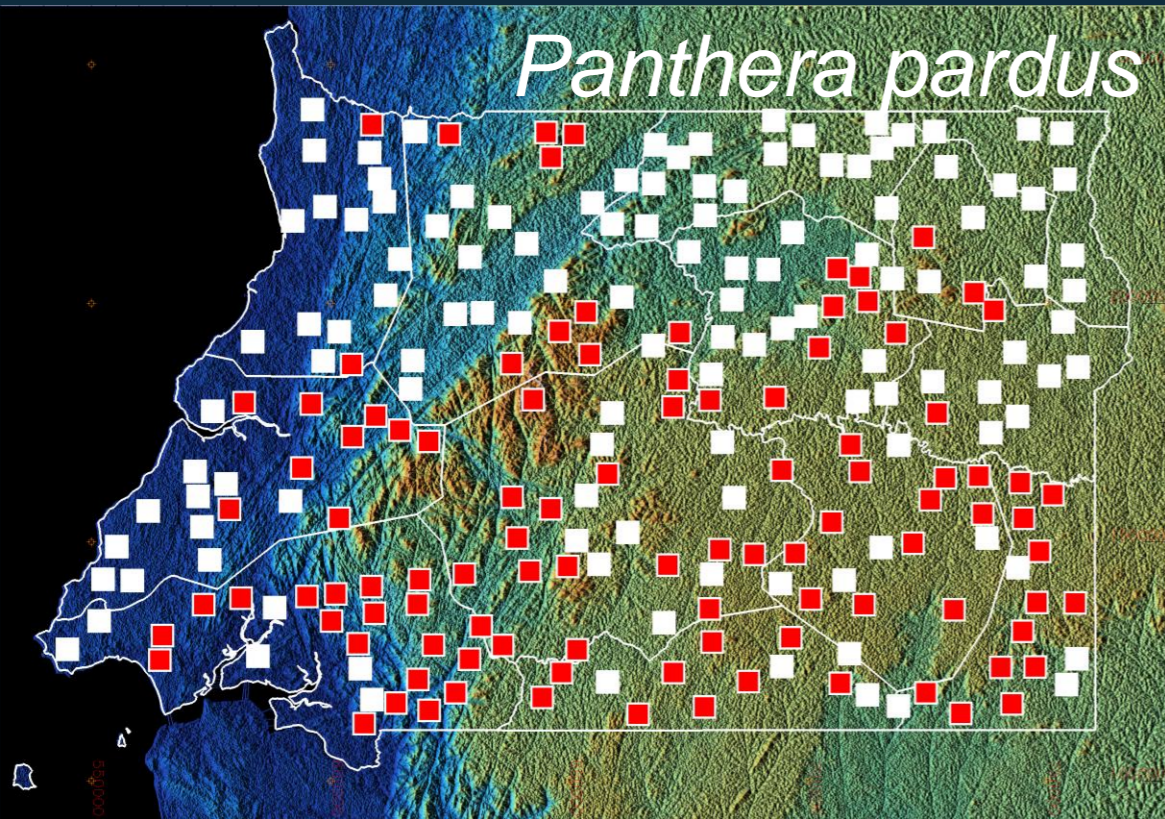
Pan troglodytes



Gorilla gorilla



Panthera pardus



Caracal aurata

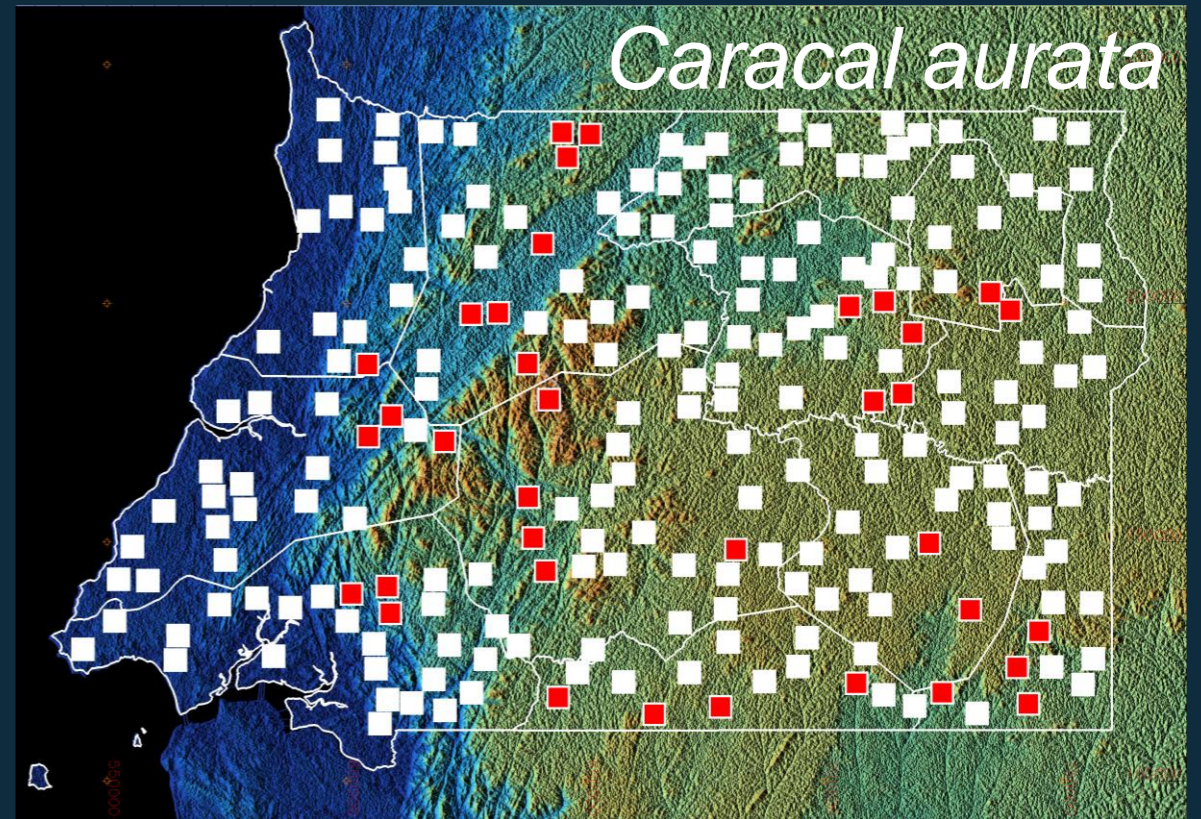




Photo: MPI



Photo: MPI

Wildlife Surveys

- Main part of survey will be 9-month census with Max-Planck-Institute for Evolutionary Anthropology (MPI)
- This research is unprecedented in EG; it will entail 3 weeks training period led by MPI and then 2 teams collecting and analyzing data
- 4 UNGE students are planning to complete their theses in conjunction with this project
- Methods include transects and ape nest and elephant dung decay studies



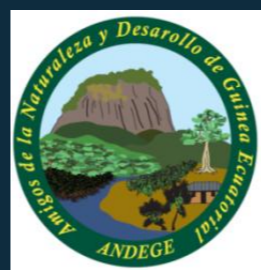
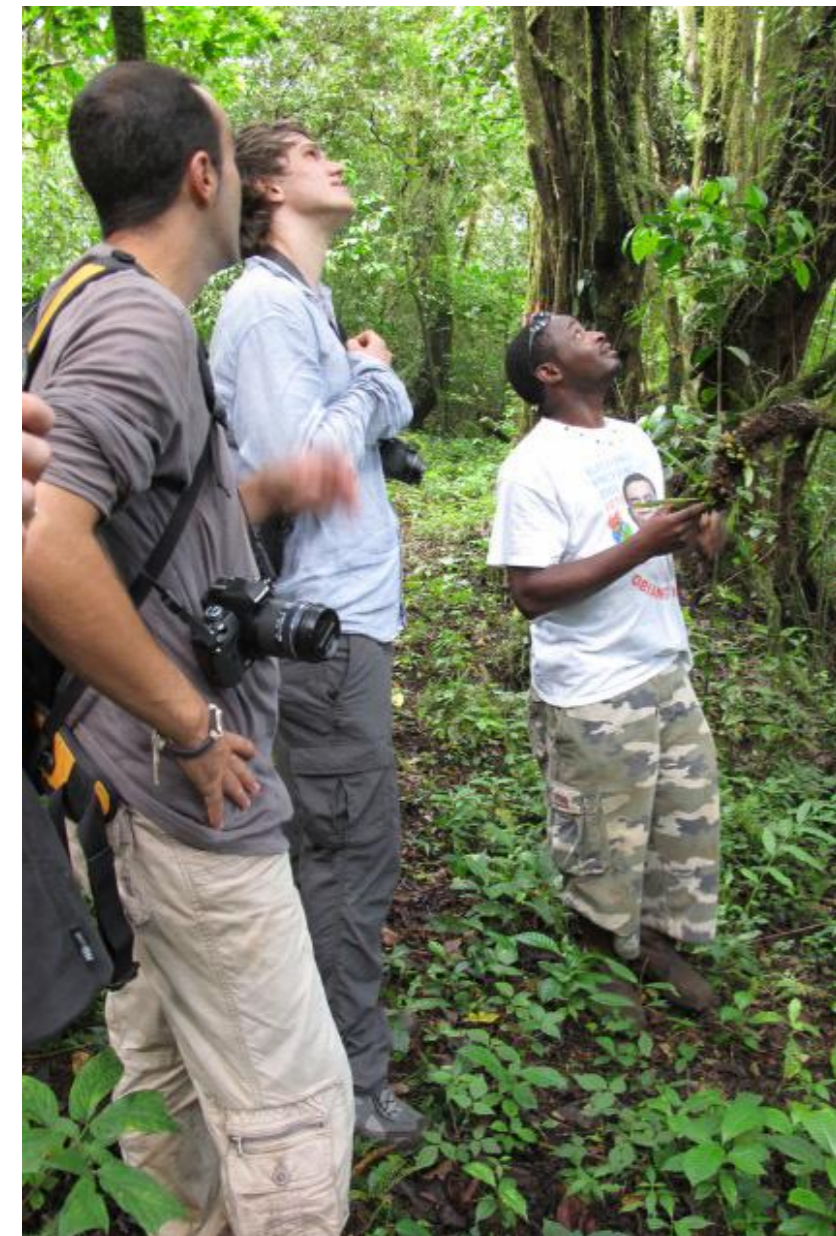


CI and Partners in EG: Culture



Ecotourism and local craft production

- EG's 2020 Plan lists tourism as one of the main future potential sectors; opportunity to focus on environment and culture for nature-based tourism
- Recent scoping with US cruise ship representative for 2 day-trips; first steps towards inclusion of EG in tour
- Bioko Biodiversity Protection Program (BBPP) has been working in tourism on Bioko Island and in local craft projects





Future Work

- Support EG Government to launch new full-size UNDP/GEF grant, “Strengthening Equatorial Guinea Protected Areas System” to engage in management and capacity building
- Continued development of REDD+ strategy
- Potential new focus on coastal zone (CARPE) and on new initiative launched by WWF Spain for transboundary park (Rio Campo, EG and Campo Ma’an, Cameroon)
- Continue to work on human-elephant conflict and secure funding for potential pilot projects
- Strengthen collaborations between ZSL, CI, ANDEGE and independent researchers Vega and Martínez on alternative livelihoods and socioeconomic monitoring

Questions?



Thank you

For more information, please contact h.ruffler@conservation.org

All photos, unless otherwise mentioned, taken by Heidi Ruffler