

Mining in the Ituri Landscape

Challenges for biodiversity conservation

Wildlife Conservation Society
(ABCG-Ituri LS Team)
Democratic Republic of Congo

**ABCG – Task B: Managing Extractive Industries to
Protect Biodiversity**



**11-12 October, 2011
Washington, D.C.**

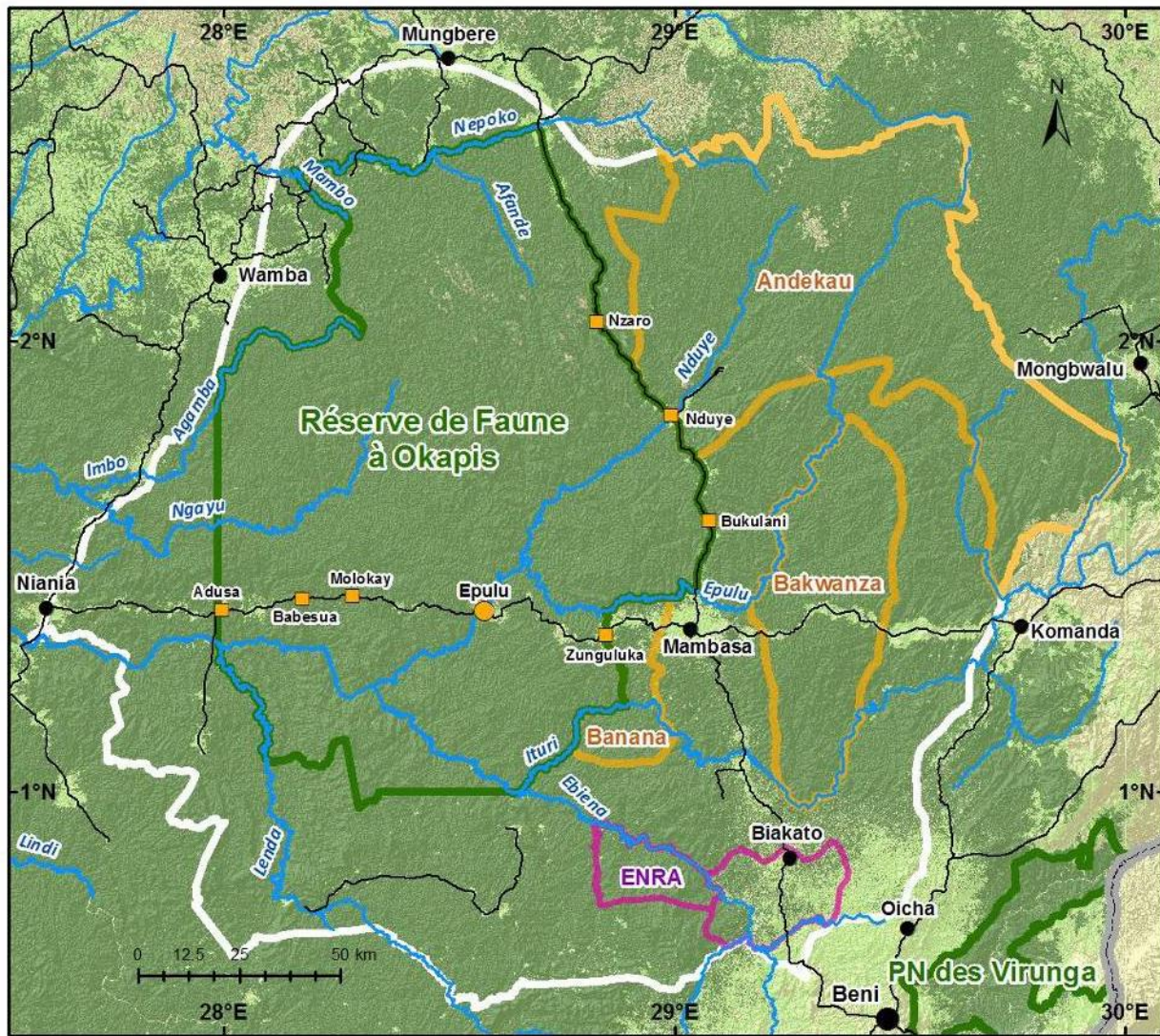
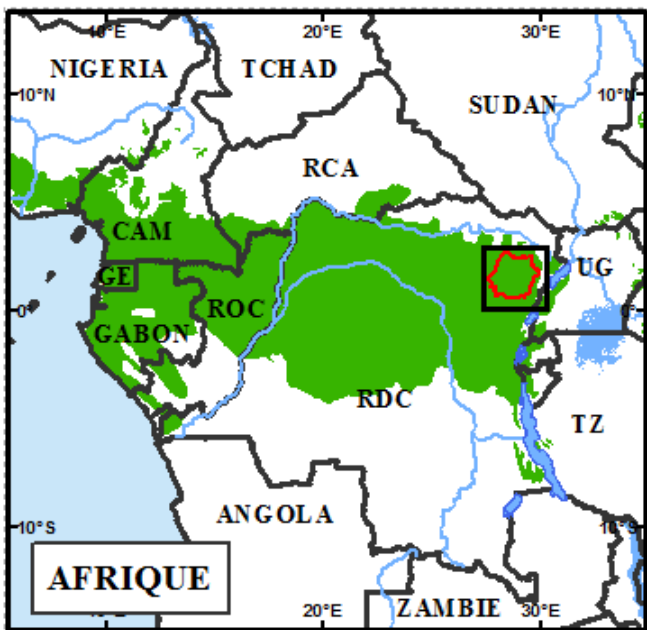


Outline

- Overview of Ituri LS
- Mining activities
- Threats
- Opportunities
- The way forward....



Ituri's location in the DRC





History of WCS in Ituri



- 1985 – WCS starts research in Ituri
- 1992 – creation of Okapi Wildlife Reserve (OWR)
- 2000 – WCS begins land use planning in OWR
- 2003 – Activities expand to Ituri LS through USAID-CARPE program support
 - Landscape landuse planning
- 2008 – Support for Livelihood activities (USAID & WB)
- 2011 – REDD Pilot Project for Mambasa (Ituri)



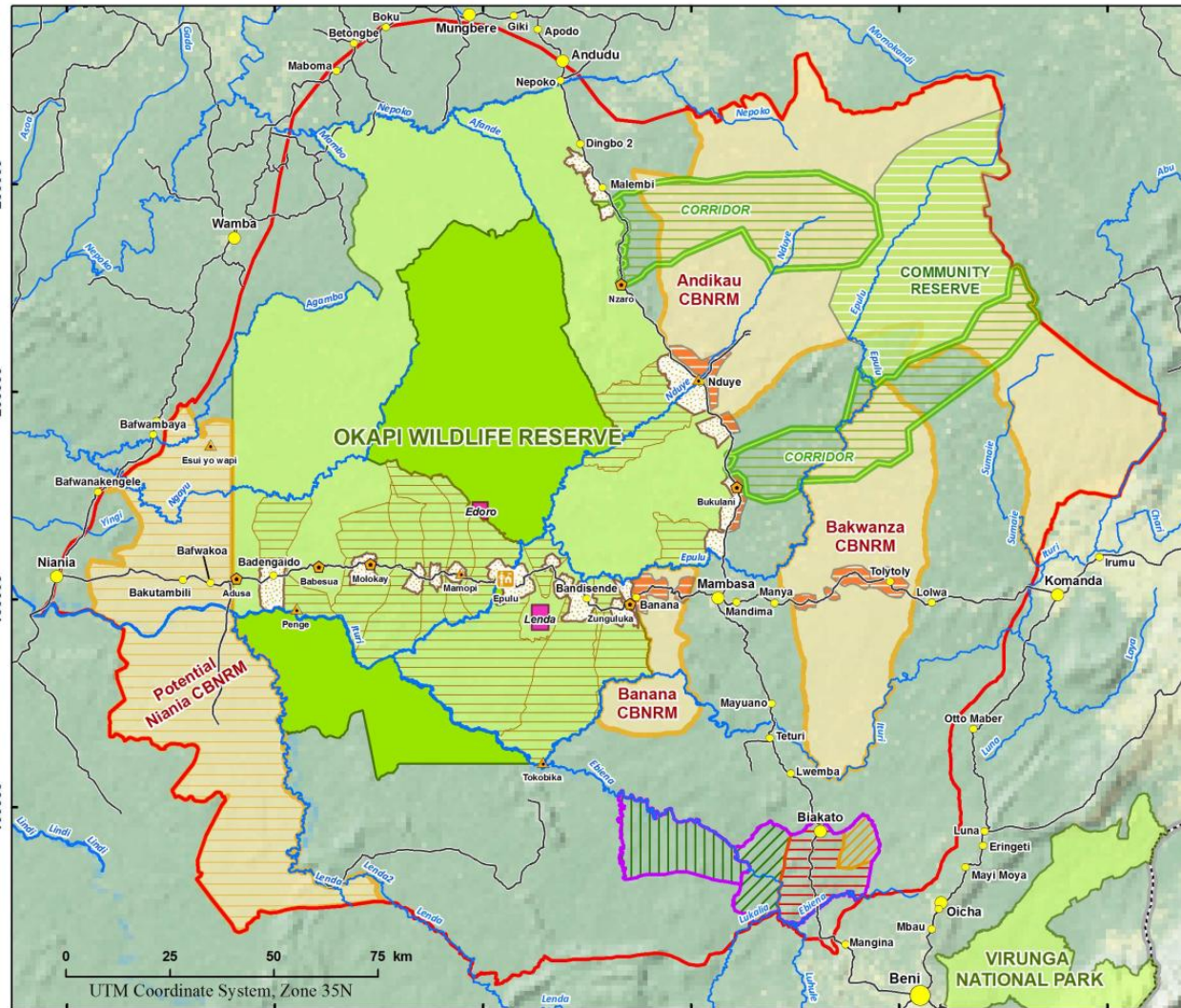
Ituri Landscape



- Stronghold for okapis
 - 2000-3000
 - DRC's largest population of forest elephants
 - 3000-4000
 - Largest population of eastern chimps
 - 6000-7000
 - 13 sp of diurnal primates in OWR
 - most of any African protected area
-
- 1500 plant species
 - Inselberg micro-environments
 - High biomass monodominant forest
 - *Gilbertodendron dewevrei*
 - Edos – clearings maintained by large mammals



Human livelihoods in Ituri



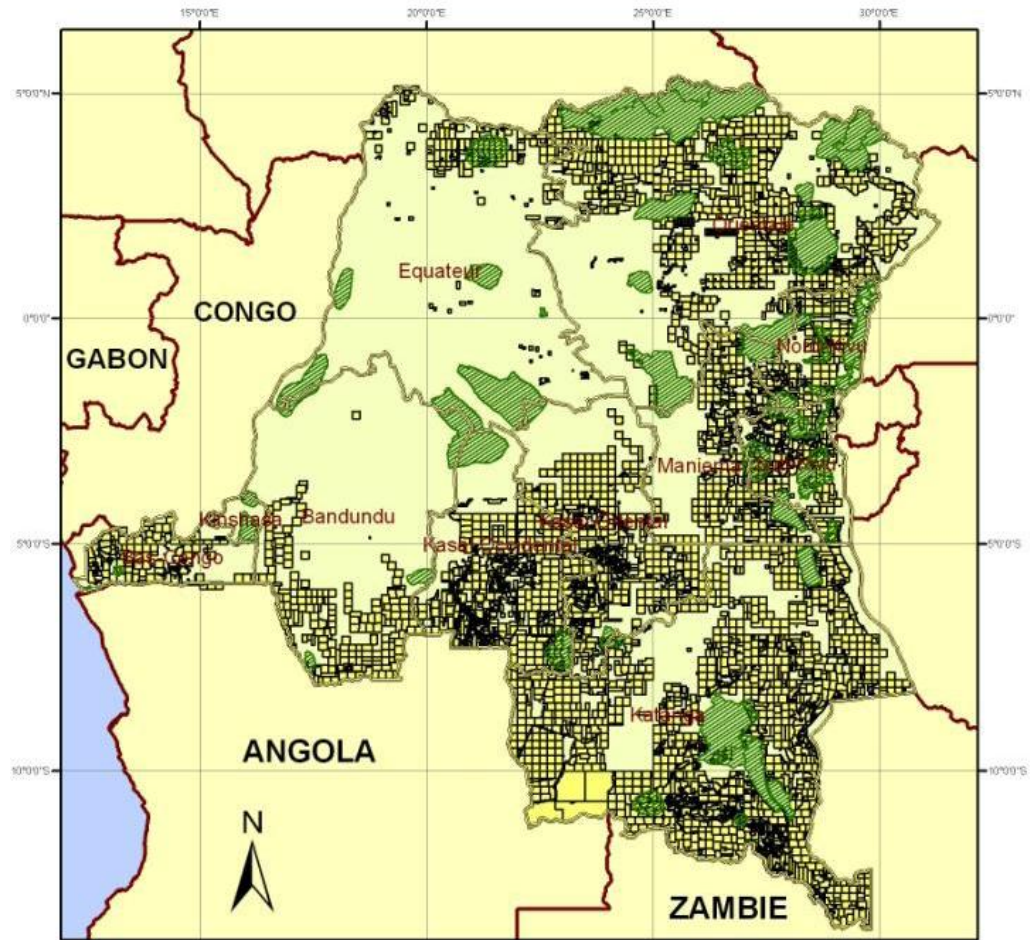
- ~40,000 km²
- 300,000 people
- Mbuti & Efe pygmies
 - Hunter-gatherers
- Bantu tribes
- >80% subsistence farmers
- Artisanal logging
- Artisanal mining
- Hunting & fishing

Carrés miniers & Protected Areas

A Geological scandal in the heart of
Africa



REPUBLIQUE DEMOCRATIQUE DU CONGO CARTOGRAPHIE GENERALE DES AIRES PROTEGEES ET TITRES MINIERS



Légende

-  Limite provinciale
-  Aire protégée
-  Périmètre minier
-  Frontières nationales

Source des données:

Aires protégées : ICCN & Partenaires (2007)
Limites administratives : RGC (2010)
Périmètre minier : CAMI (2009)

1:12 000 000

0 250 500 Km

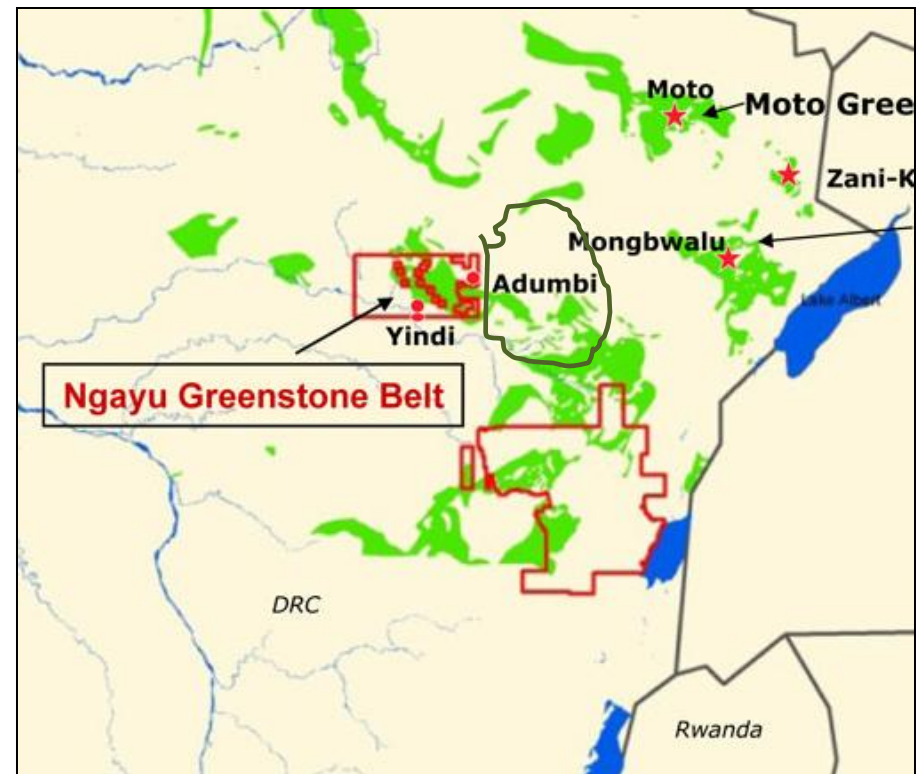


© Avover team, 2010

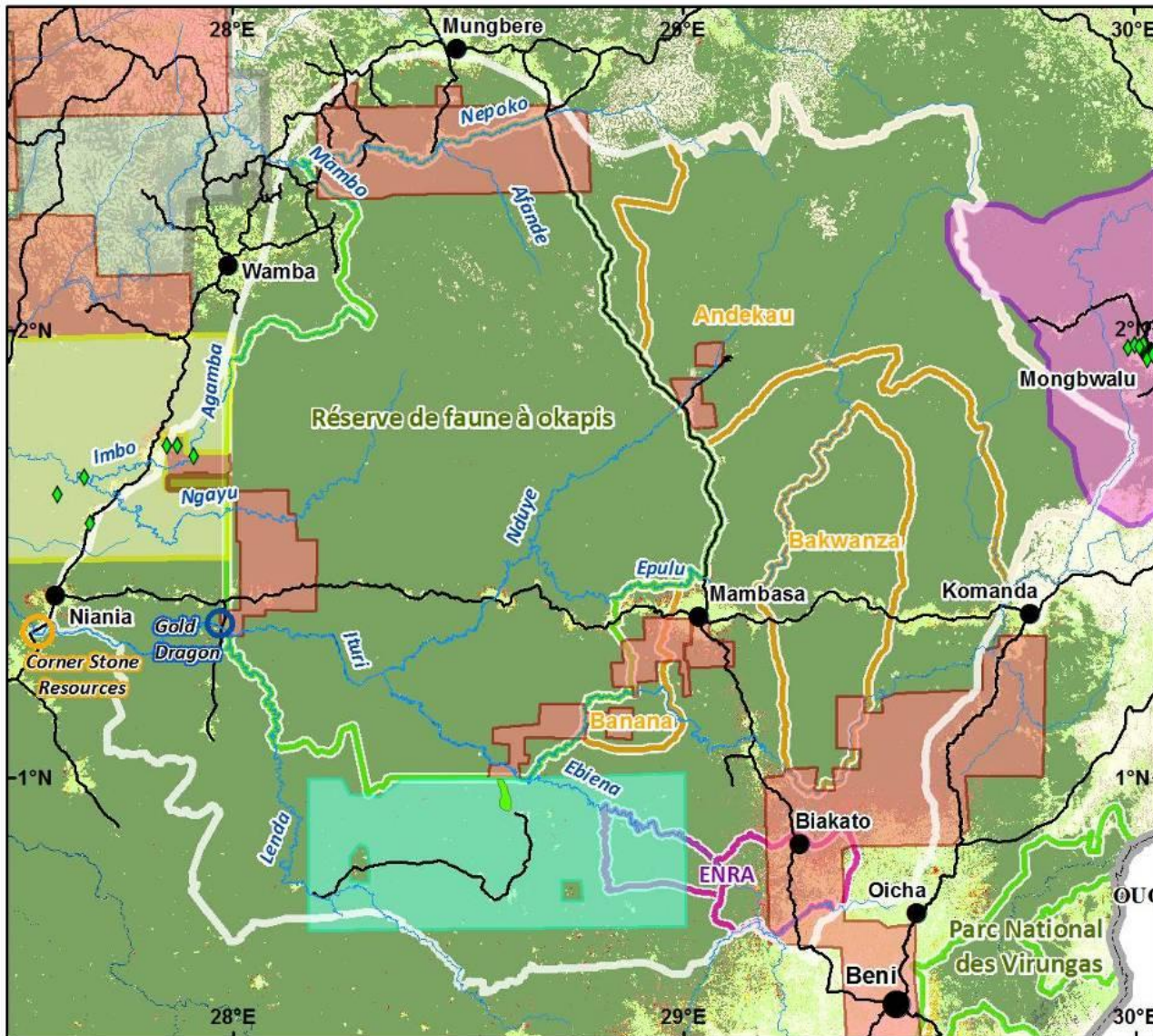


Geology of Ituri

- Greenstone belts with Banded Iron Formations which host quartz veins
 - Gold, Iron, Diamonds
- Companies claim highly productive mines
 - millions of oz of gold expected production



Industrial Mining Concessions

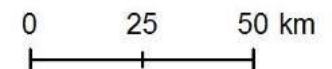


Concessions Industrielles autour du Paysage Ituri

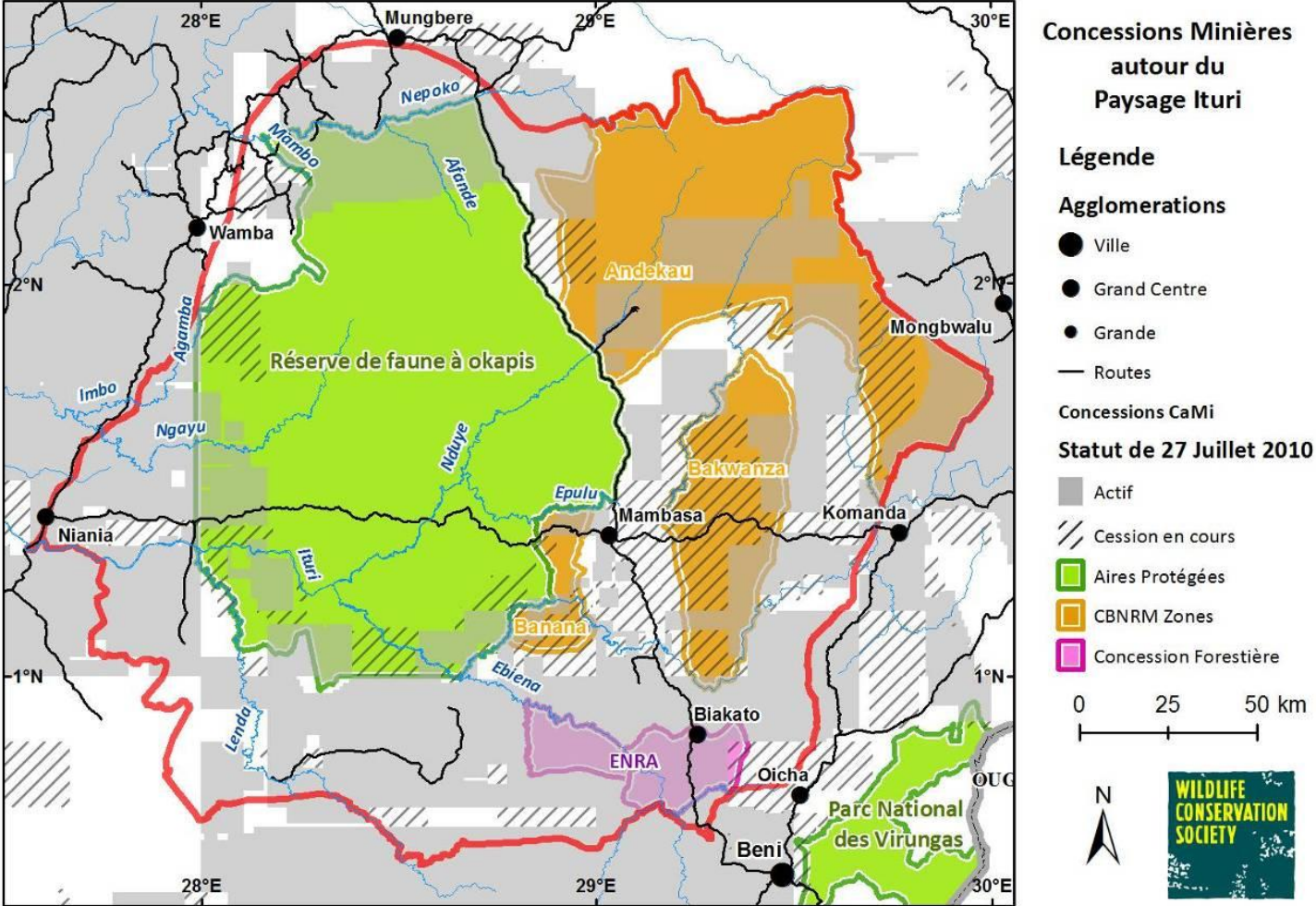
Légende

Concessions Minières

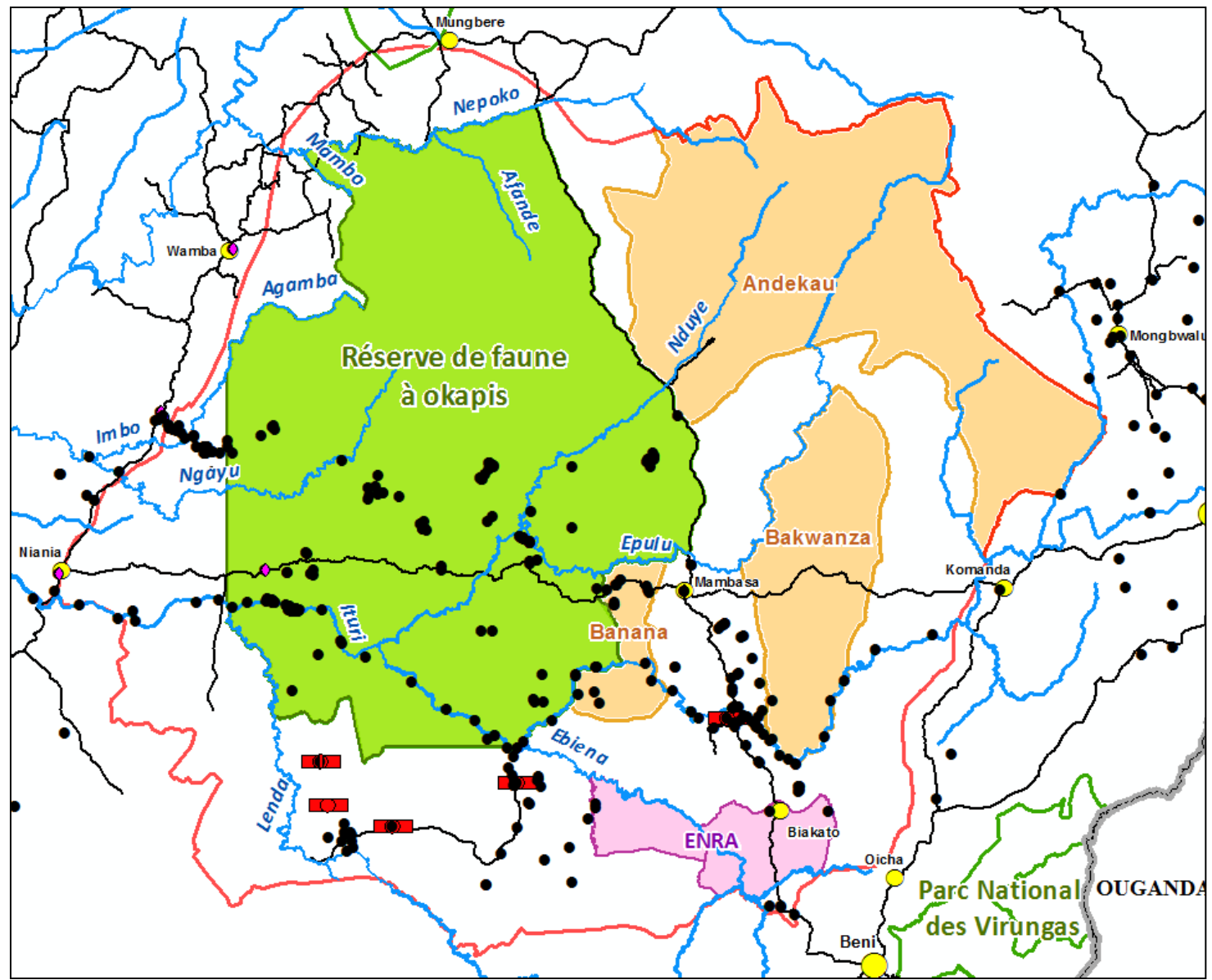
- AngloGold Ashanti
- Auris AG
- Golden Valley
- Kilo-Gold
- Loncor
- Rio Tinto (fer)
- Sites d'infrastructure
(actuel ou prévu)
- Aires Protégées
- CBNRM Zones
- Concession Forestière



Industrial Mining Concessions & CBNRM Zones



Artisanal Mining



ASM indistinctively affect Protected Areas as well as CBNRM Zones in Ituri LS

List of Companies



#	Location	Products		Observation
1. Anglo Gold Ashanti - AGA -	North Eastern of the LS. Djugu-Irumu and Watsa Territories	Gold	Anglo-American – South Africa	Exploitation phase to begin in Concessions 40
2. Kilo Gold	Mambasa - Irumu-Djugu-Beni-Wamba Territories	Gold, diamond	Canadian Toronto; overlap ENRA concession	Exploration (11 permits) and development
3. Canadian Loncor Resources*	Mambasa- Wamba	Gold, platinum, niobium, tantalum, copper, iron, diamond.	agreement with Rio Tinto exploration	Exploration (55 permits) Ngayu Project (4,550 sq.km)– NK (17M sq.km)
4. Rio Tinto	Haut-Uele (Wamba-Banalia-Poko	Iron, diamond	Multi-national (UK, AU, US, CA)	Mapping and sampling; Exploration
5. Auris AG	Mambasa, Bafwasende and North Kivu	Gold	Switzerland	Exploration
6. Golden Valley	Unknown	Gold		
7. Golden Dragon (FAMETAL)	Bafwasende and Mambasa (Ituri river)	Gold and diamond	Chinese	Exploration
8. Kilo Moto	Djugu-Watsa-Irumu	Gold and derives	DRC Gov	Selling shares and sites to foreign companies
9. COMMET	Ituri river	Gold, diamond	Russian	Exploration (16 permits)

Future Mineral Exploitation



Threats to biodiversity

- Destruction of habitat & wildlife
 - Land removal
 - Development of infrastructure
 - Deforestation & forest degradation
 - Agricultural expansion
 - Unsustainable illegal/artisanal logging
 - Charcoal production
 - Water ways
 - Siltation of rivers
 - Chemicals (mercury & cyanide) entering water
 - Bushmeat exploitation & poaching



Social Threats

- Militarization of mining / poaching
- Unbalanced economy
- Proliferation of illnesses & STDs
- School drop out ---Children are involved in mining & not in school
- New human agglomerations/Immigrations
- Resettlement of populations
- Traditional ownership rights
- Conflicts with artisanal miners





Legal aspects - Opportunities

Industrial Mining Companies are required:

- ***Exploration Phase***
 - Attenuation & Rehabilitation Plan

- ***Exploitation Phase***
 - Environmental Impact Assessment
 - Project Environmental Management Plan



Progress in Collaboration

- WCS has established preliminary contacts mining companies:
 - Kilo-Gold, Loncor, Rio Tinto, Anglo-Gold Ashanti
- WCS participate as stakeholder to AGK -EIA
- Site visits to Kilo-Gold & Loncor operations
- Identifying large mining installations
- Preliminary report on status of Mining activities across Ituri LS
- Partnering with local NGOs for visits to artisanal mines

Site Visits

Yindi Mine - Loncor

Adumbi Mine – Kilo-Gold





The way forward...

- Integration of the ERZ in the Land use plan
 - Mining concessions
 - Artisanal zones (cooperatives)
- Assess & mitigate impacts from mining
 - Environment Impact Assessment
 - Environmental and Social impact mitigation
 - Fauna and flora inventories ... sites
 - Socioeconomic studies
 - Negotiation of the Cahiers des Charges with Local communities
- Monitoring and Evaluation of mitigation plans
- Economic alternative activities
- Collaboration with the DRC government
 - Governance



Partnerships for Conservation?

- Development of EIA; Env't. Management Plan
 - Socio-economic surveys
 - Biodiversity (flora & fauna) surveys
 - Negotiation of the Cahiers des Charges with Local communities
- Support for livelihoods activities
 - Development of alternative economic activities
- Monitoring of biodiversity
- Negotiation for Biodiversity Offsets/Trust funds

WCS could provide technical oversight & expertise

Thank you for your attention...



CONSERVATION
INTERNATIONAL



the Jane Goodall Institute



The Nature
Conservancy



Protecting nature. Preserving life.®



W R I



WWF

Africa Biodiversity Collaborative Group