



ABCG DRC Mining workshop 11-12 October

Mining & biodiversity overlaps in DRC

Tuesday October 11, 2011

Mahlette Betre, Conrad Savy,
Peter Veit , Anne-Gaelle Javelle
& Pascal Douard

**CONSERVATION
INTERNATIONAL**





- Objectives
- Priorities & permits: what are they?
- What is the overlap between them?
- How we could respond?

Overview



- **Objective** of this assessment:
 - Is there an overlap?
 - Where is the overlap taking place?
- **Methodology:**
 - Selected a sub-set of conservation priorities in DRC : Protected areas, Key Biodiversity areas and AZE sites
 - Obtained data on Mine permits in DRC
 - Using GIS, overlaid datasets
- **Caveats:**
 - This is an initial desktop assessment to inform our discussion
 - Needs ground-truthing by DRC experts
 - Not a comprehensive review of all data on potential conservation priorities

Objectives

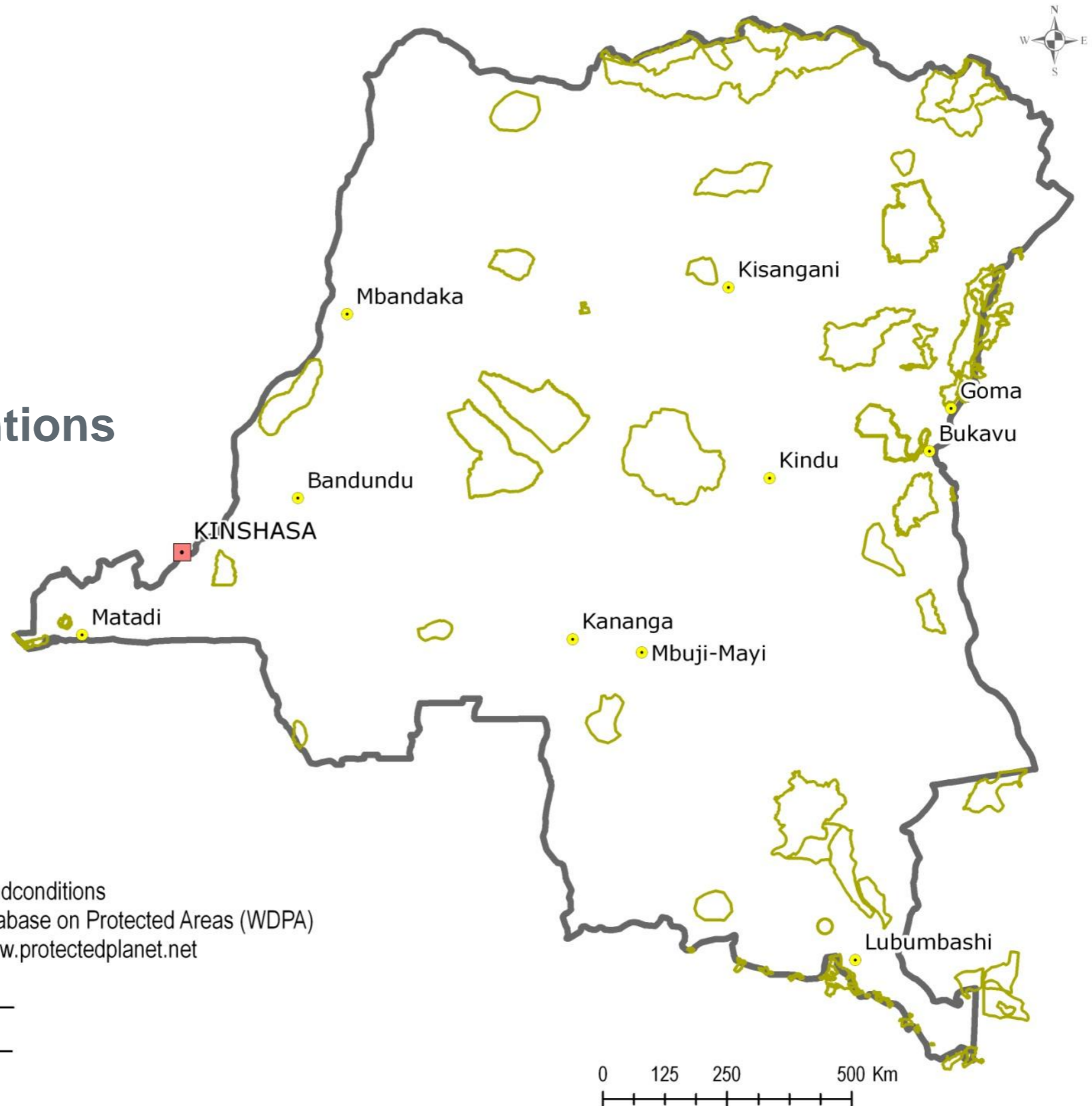
Democratic Republic of Congo: Conservation Priority Areas



Conservation Priority Area

 World Database on Protected Area

- **8% land PA**
- **46 PA's**
 - **10 Intl Conventions**
 - **36 Nat'l law**



Sources:

- WDPA: <http://www.protectedplanet.net/termsandconditions>

IUCN and UNEP-WCMC (2010), The World Database on Protected Areas (WDPA)

Cambridge, UK: UNEP- WCMC. Available at: www.protectedplanet.net

- Towns: DIAF, WRI, 2010

October 2011

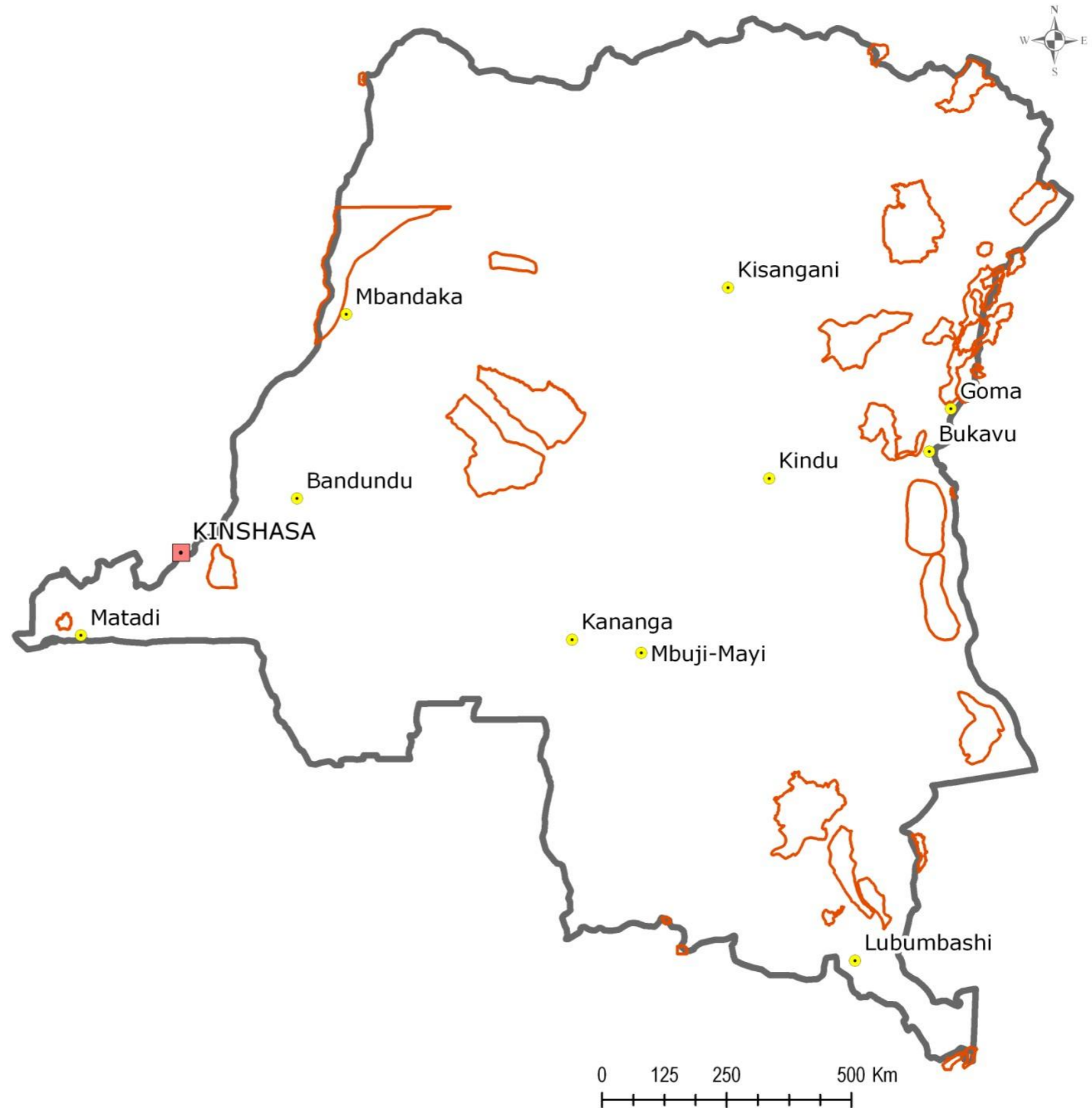
Democratic Republic of Congo: Conservation Priority Areas



Conservation Priority Area

Key Biodiversity Area

• 21 KBA's



Sources:

- KBA: BirdLife International

- Towns: DIAF, WRI, 2010

October 2011

Democratic Republic of Congo: Conservation Priority Areas



Conservation Priority Area

 Alliance for Zero Extinction Sites (2010)

- **3 AZE sites**
 - **Scierie Forest**
 - **Kahuzi-Biega Natl Park**
 - **Itombwe Mtns**



Sources:

- AZE: AZE Update, 2010, www.zeroextinction.org




- Towns: DIAF, WRI, 2010

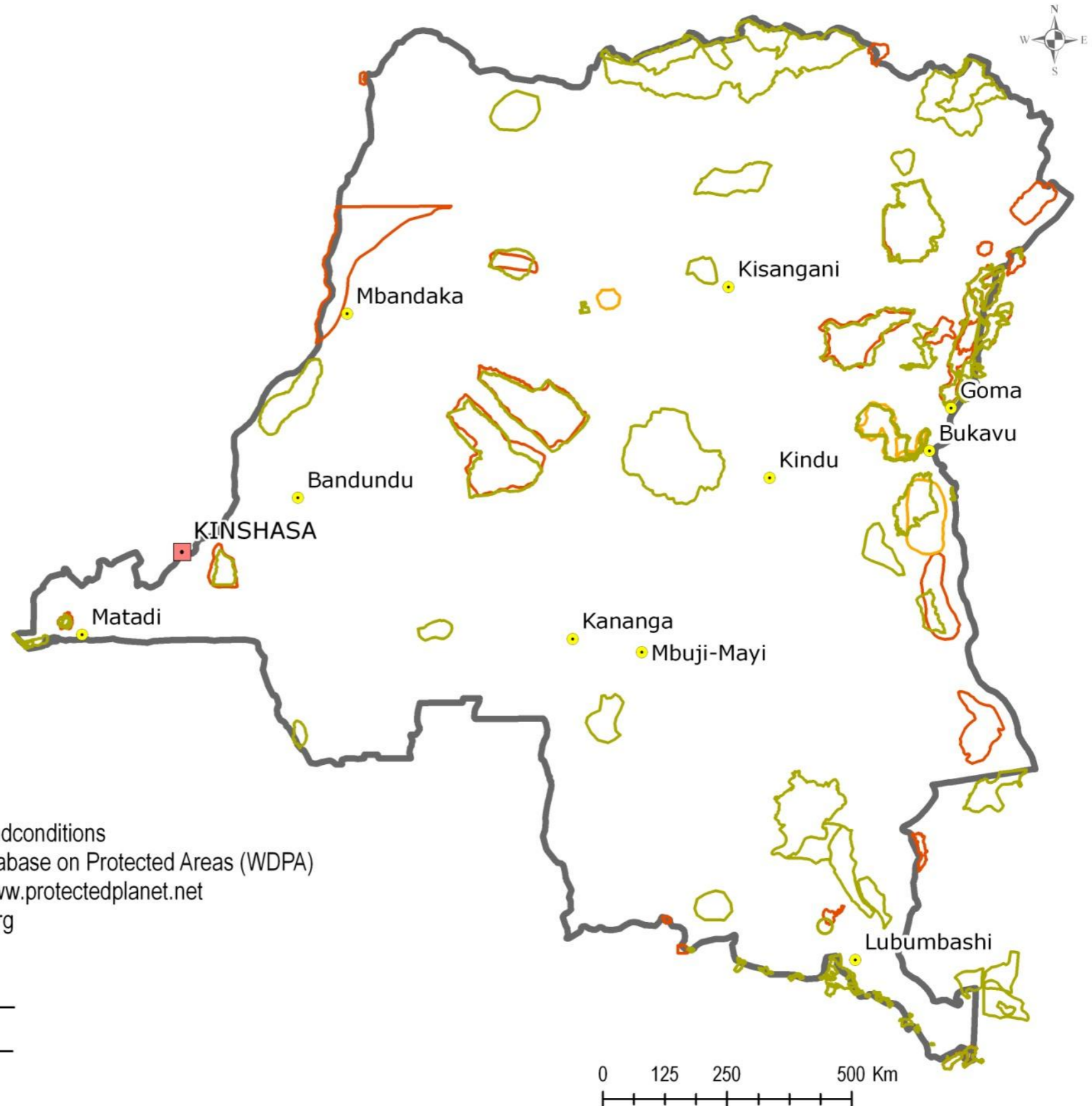
October 2011

Democratic Republic of Congo: Conservation Priority Areas



Conservation Priority Area

-  World Database on Protected Area
-  Alliance for Zero Extinction Sites
-  Key Biodiveristy Area



Sources:

- WDPA: <http://www.protectedplanet.net/termsandconditions>
- IUCN and UNEP-WCMC (2010), The World Database on Protected Areas (WDPA) Cambridge, UK: UNEP- WCMC. Available at: www.protectedplanet.net
- AZE: AZE Update, 2010, www.zeroextinction.org
- KBA: BirdLife International
- Towns: DIAF, WRI, 2010

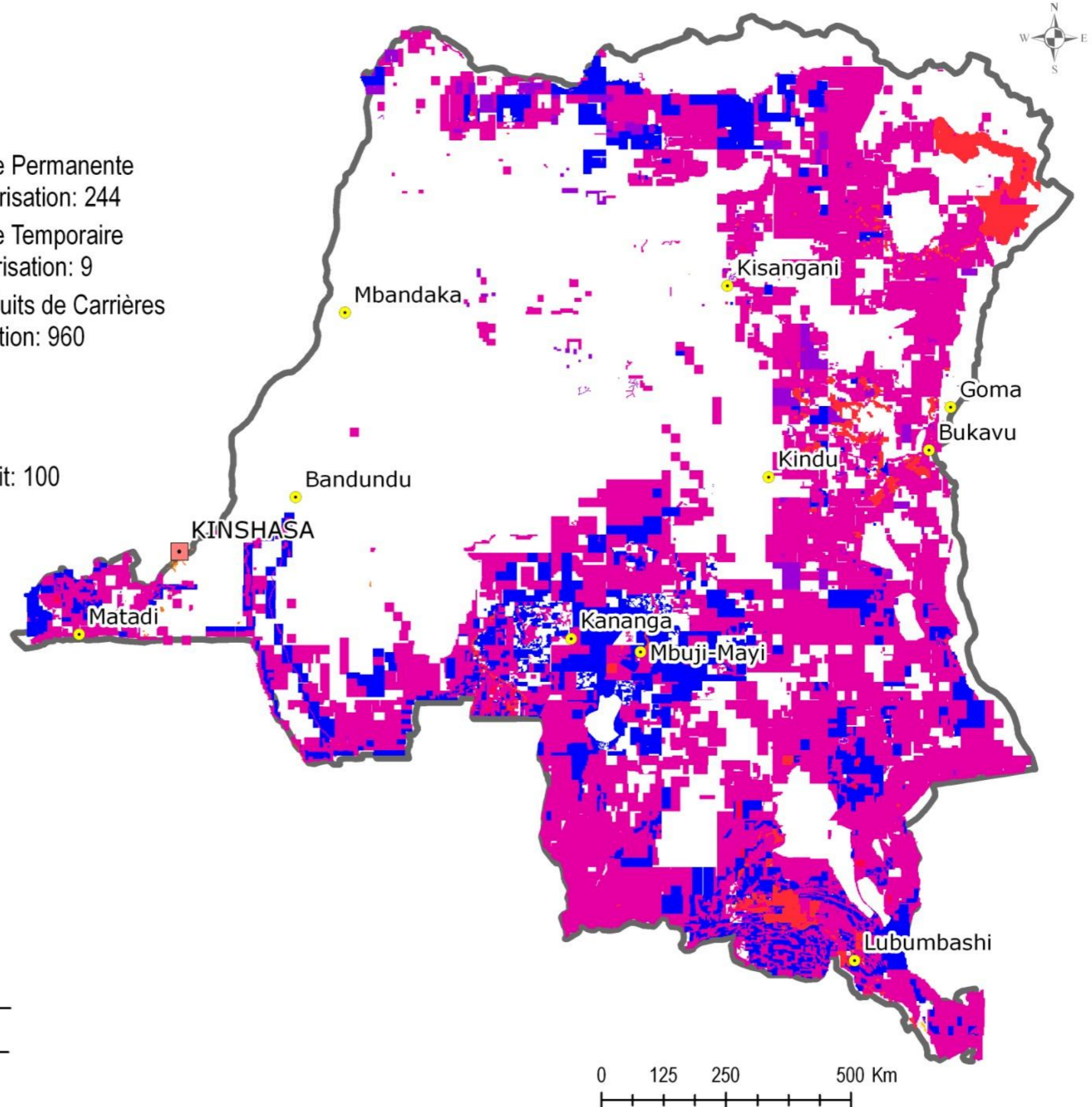
October 2011

Democratic Republic of Congo: Mining Permits



Mining Permits

-  Autorisation d'Exploitation de Carrière Permanente
Permanent Quarry Exploitation Authorisation: 244
-  Autorisation d'Exploitation de Carrière Temporaire
Temporary Quarry Exploitation Authorisation: 9
-  Autorisation de Recherches des Produits de Carrières
Quarry Product Exploration Authorisation: 960
-  Permis d'Exploitation
Exploitation Permit: 442
-  Permis d'Exploitation de Petite Mine
Small-scale Mining Exploitation Permit: 100
-  Permis d'Exploitation des Rejets
Tailings Processing Permit: 21
-  Permis de Recherches
Exploration Permit: 4221
-  Zone d'Exploitation Artisanale
Artisanal Exploitation Area: 240
-  Zone de Recherches Géologiques
Geological Exploration Area: 1495



Sources:



- Mining permits: Ministry of Mines, DRC, 2011
- Towns: DIAF, WRI, 2010

October 2011



Democratic Republic of Congo: Mining Permits on Conservated Priority Area

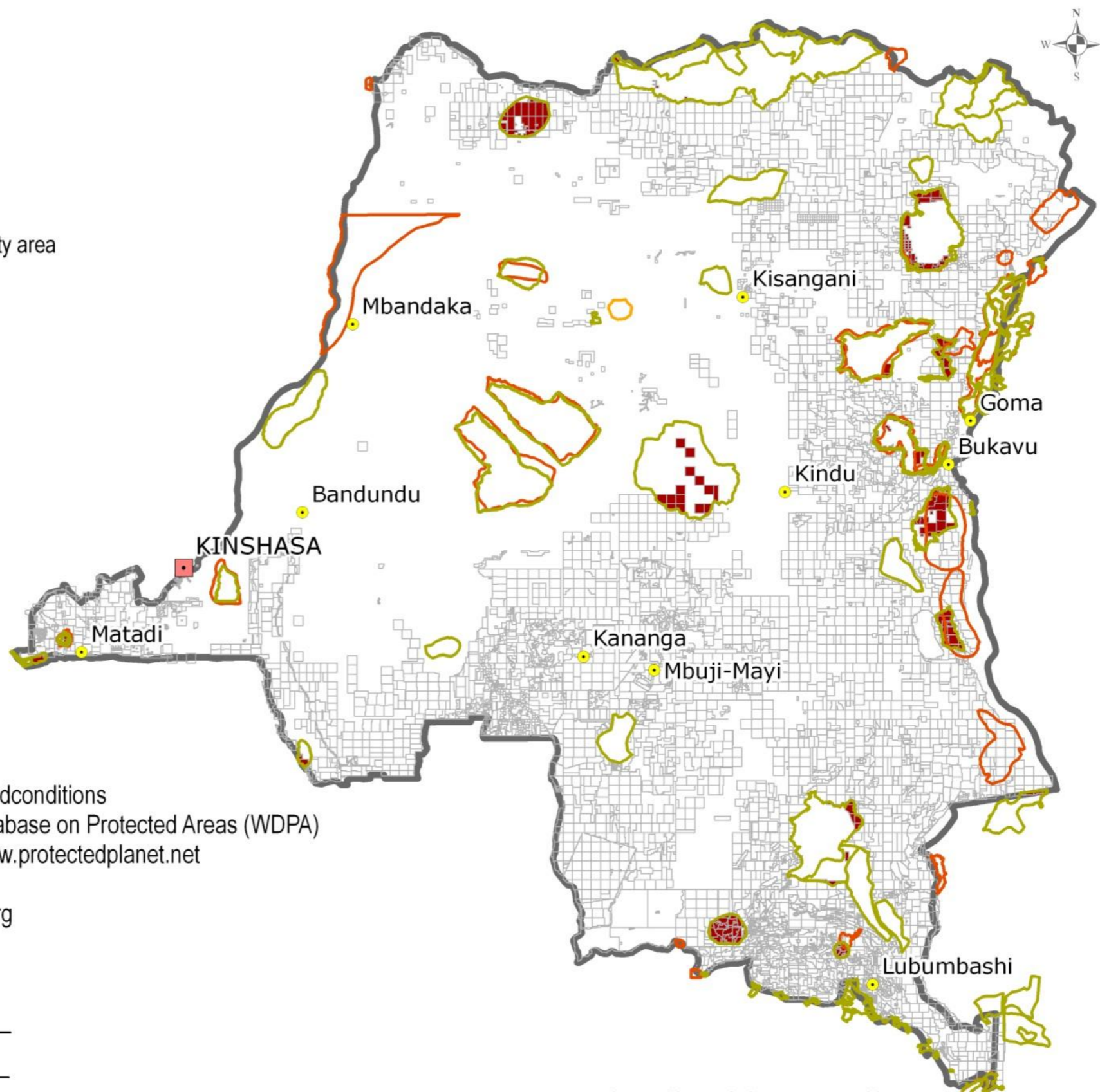


Mining permit

-  Mining permit
-  Mining permit located in a conservated priority area

Conservation Priority Area

-  World Database on Protected Area
-  Key Biodiveristy Area
-  Alliance for Zero Extinction Sites



Sources:

- WDPA: <http://www.protectedplanet.net/termsandconditions>
- IUCN and UNEP-WCMC (2010), The World Database on Protected Areas (WDPA) Cambridge, UK: UNEP- WCMC. Available at: www.protectedplanet.net
- KBA: BirdLife International
- AZE: AZE Update, 2010, www.zeroextinction.org
- Towns: DIAF, WRI, 2010
- Mining permits: Ministry of Mines, DRC, 2011
- Towns: DIAF, WRI, 2010

October 2011



- This is only an initial picture of potential issues. Should look at:
 - Degree of overlap
 - Protected area categories
 - Additional conservation priorities datasets
 - Water catchments
 - Analysis of companies – national vs foreign, junior vs major (WRI analysis)
 - ICMM members, IFC financed?
 - Data on Artisanal mining
- Next question is: how do we respond? How do we engage these companies?

Further Analysis

WHAT:

- Promote Best Practices e.g. ICMM, IFC Performance Standards, CASM
- Examine Supply Chain, Market and legal mechanisms that drive suppliers e.g. Love Earth, Walmart; Dodd –Frank Act.

WHO:

- Companies
- International Associations e.g. ICMM, PDAC
- National Policy Makers

HOW

- Workshop in DRC
- Translation of Materials



How could we respond



Thank you



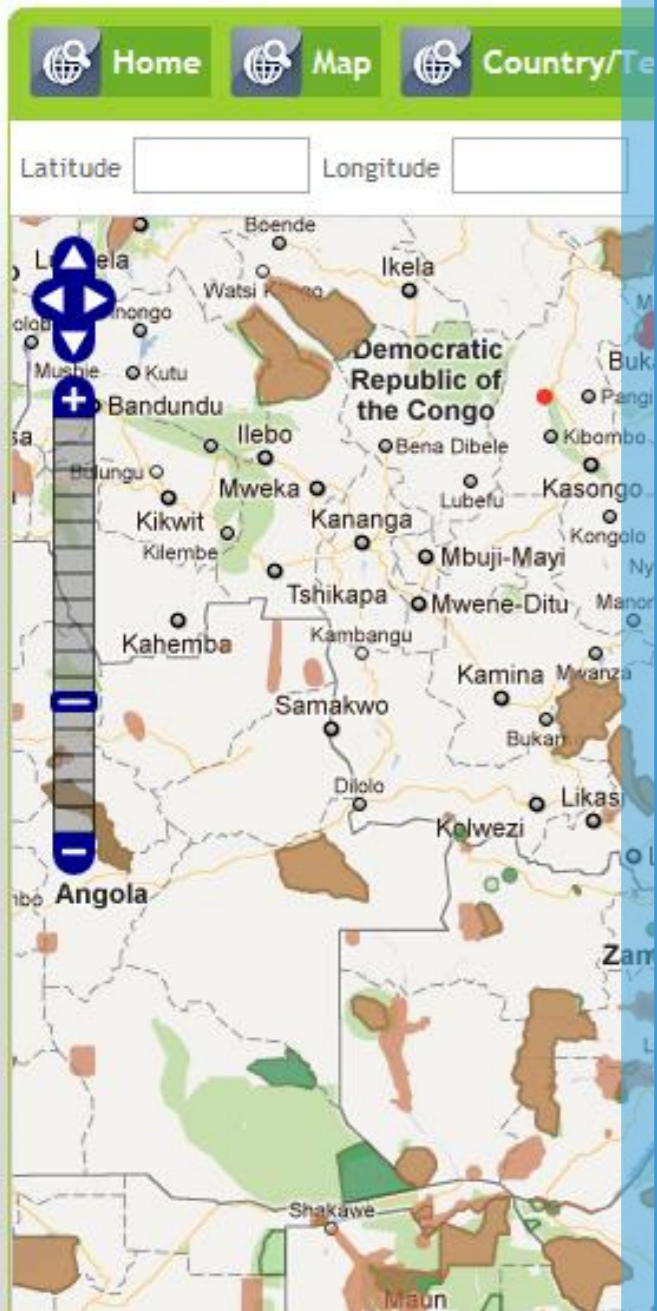
- As an example of how an investment safeguard would apply let's look at the International Finance Corporation (IFC), private sector lending arm of World bank group.
- 8 performance standards (PS) for screening and guiding projects; reference standard for private sector project financing via the Equator Principles (72 institutions); recognized as leading best practice safeguard
- PS6: Biodiversity Conservation & Sustainable Management of Living Natural Resources. Objective: "To protect and conserve biodiversity; To maintain the benefits from ecosystem services; To promote the sustainable management of living natural resources through the adoption of practices that integrate conservation needs and development priorities."
- Appropriate external experts required to review aspects of critical habitat assessment, impact mitigation and stewardship
- Function through defining categories of important areas that trigger certain assessment and mitigation requirements

IFC Performance Standard 6



- The conservation priorities used in this analysis are explicitly referred to by IFC PS6 as “legally protected area or an internationally recognized area” (see IFC PS6, para 20):
 - **Legally protected areas:** “meet the IUCN definition...For the purposes of this Performance Standard, this includes areas proposed by governments for such designation.”
 - **Internationally recognized areas:** “Exclusively defined as UNESCO Natural World Heritage Sites,....Man nd the Biosphere Reserves, Key Biodiversity Areas, and wetlands designated underthe Ramsar Convention...”
- Where proposed projects occur in these areas they will need to meet all requirements related to natural and critical habitats. They will also have to:
 - “Demonstrate that the proposed development in such areas is legally permitted;
 - Act in a manner consistent with any government recognized management plans for such areas;
 - Consult protected area sponsors and managers, Affected Communities, Indigenous Peoples and other stakeholders on the proposed project, as appropriate; and
 - Implement additional programs, as appropriate, to promote and enhance the conservation aims and effective management of the area.”

Response to overlap



- CI, BirdLife International, IUCN & UNEP-WCMC
- Dynamic online spatial tool bring together available data on species, protected areas and KBAs
- Supports project intersection analysis to inform risk screening and scoping for further assessment
- One of a set of tools e.g. Conservation version launched to support NBSAP
- Opportunity to include ecosystem service data being explored (e.g. freshwater)