



Getting SMART about stopping poaching

**WILDLIFE
CONSERVATION
SOCIETY**



**Emma J Stokes
Wildlife Conservation Society**

The context



Targeting the need

Frontline Conservation Staff
more effective protection



Protected Area Managers
more effective coordination

Indigenous and Local People
support community-based management

The role of SMART

**Information on
where patrols
need to go**

**Information on
how well patrols
are performing**



Must-haves for SMART

- Free
- Accessible and easy-to-use by front-line agencies
- Get information to the right people fast
- User-driven
- Provide innovation and benefits over existing tools



How does SMART work?

Data collection



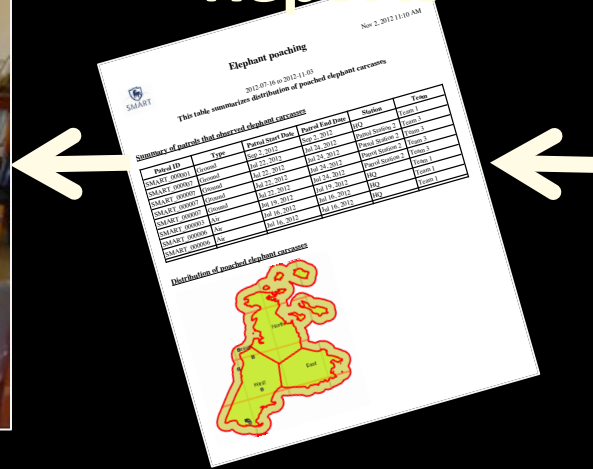
Debriefing



Patrol planning



Analysis and Reports



Data entry



Key features

Intelligence-led

Patrol planning

Mobile data gathering

Powerful analytical engine

Available in local
languages

Case-tracking in devt



Where are we now?

- SMART 1.0 formally released on Feb 22 , 2013
- Field testing underway
- A series of regional training/engagement workshops scheduled in Asia/Africa/LAP for 2013
- Future development priorities identified

**This is a critical phase for SMART adoption
by govt and other partner agencies**

The SMART Partnership today



FRANKFURT
ZOOLOGICAL
SOCIETY

Members



Supporters

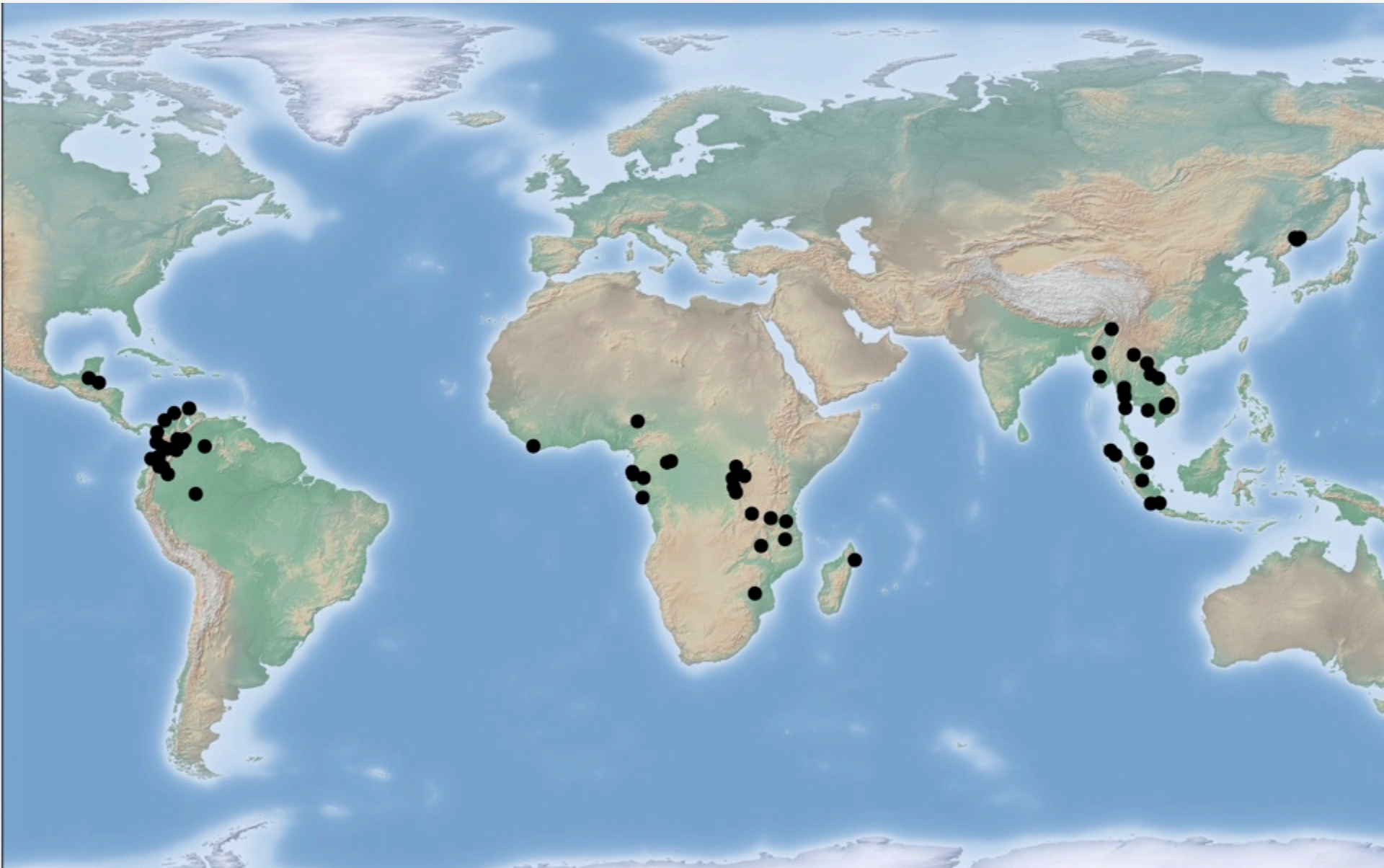


Donors

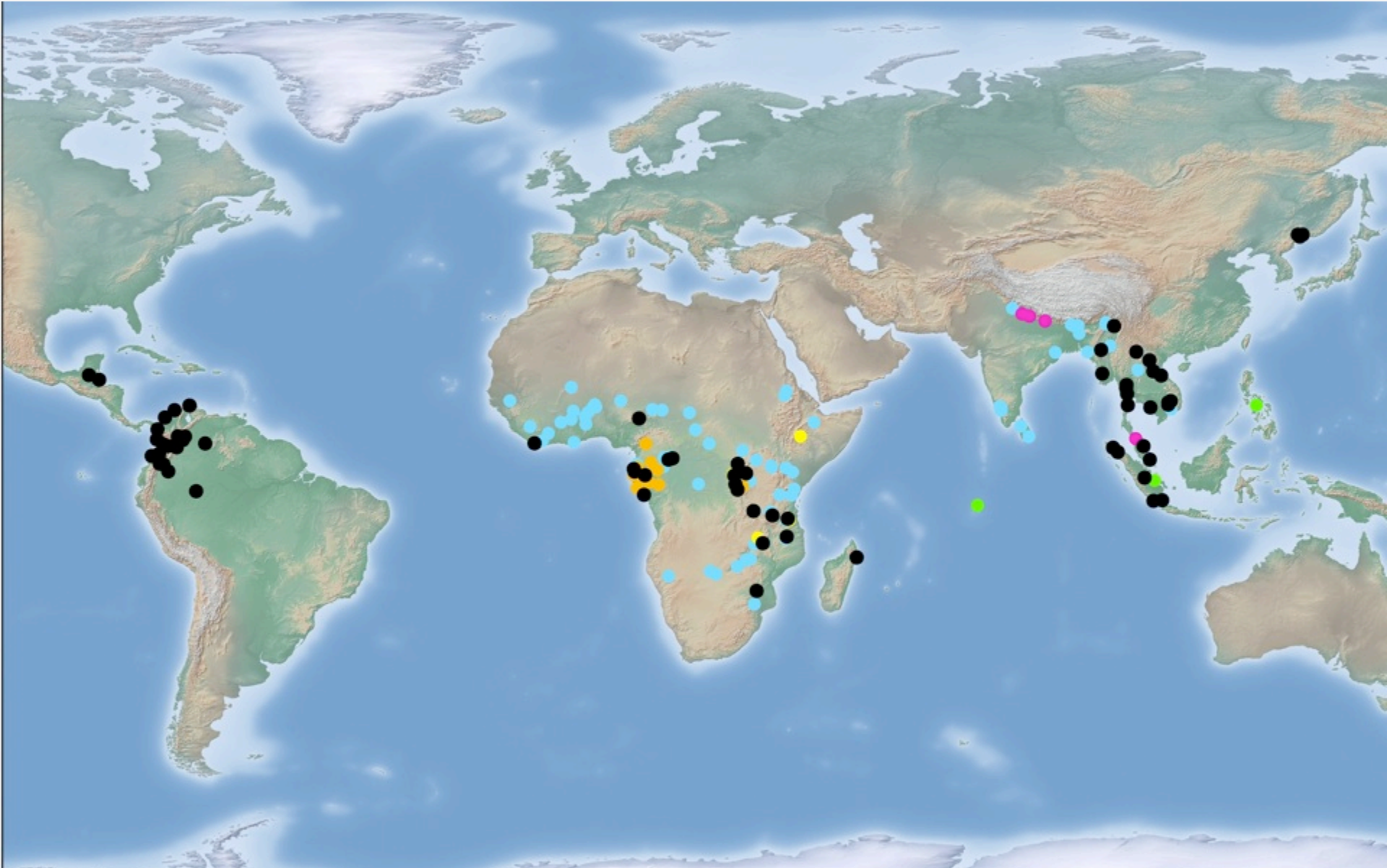


LIZ CLAIBORNE
ART ORTENBERG
FOUNDATION

Pilot sites



Where will we be in 10 years?

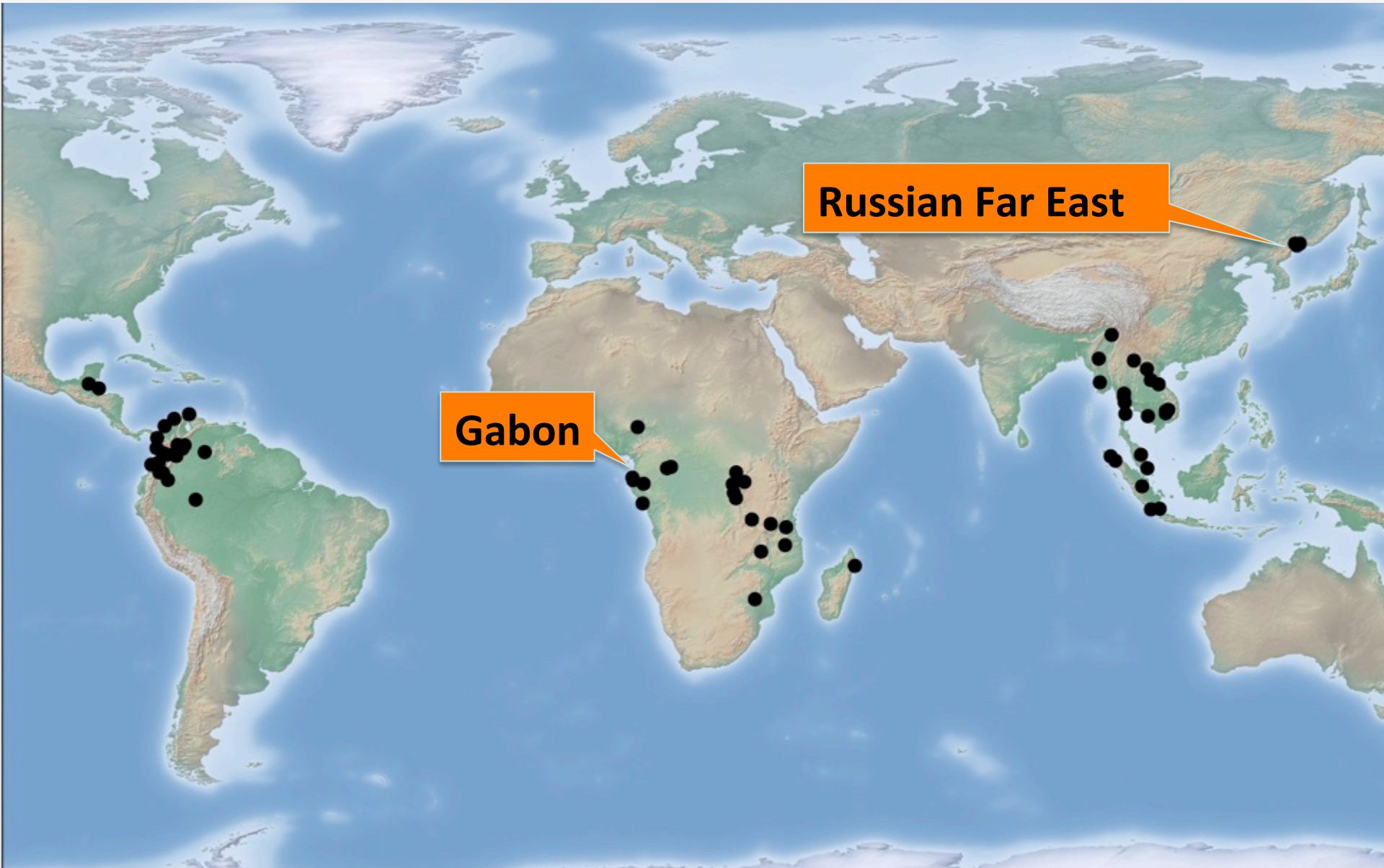


Scale



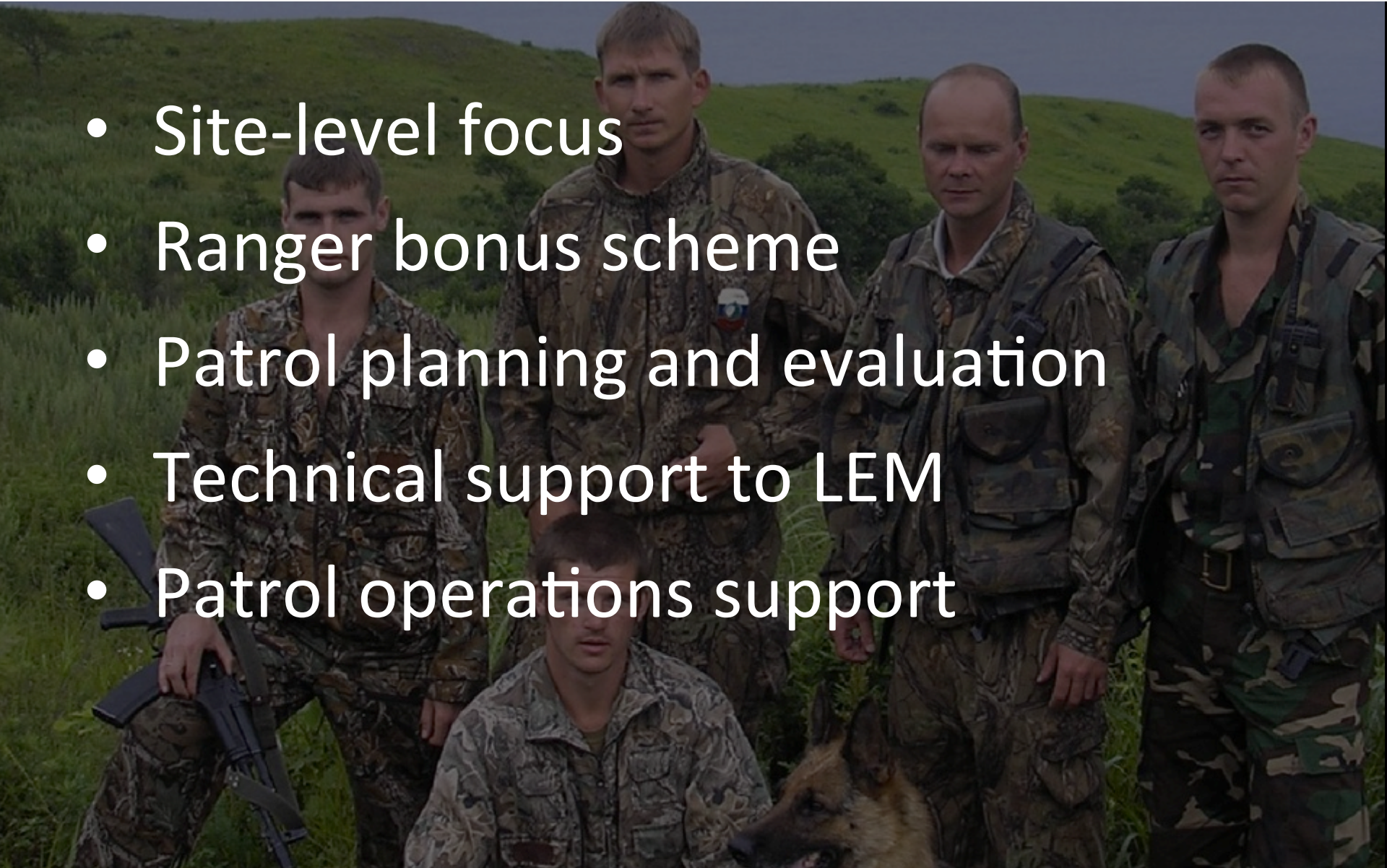


Case studies



Improving patrol quality: Russia

- Site-level focus
- Ranger bonus scheme
- Patrol planning and evaluation
- Technical support to LEM
- Patrol operations support

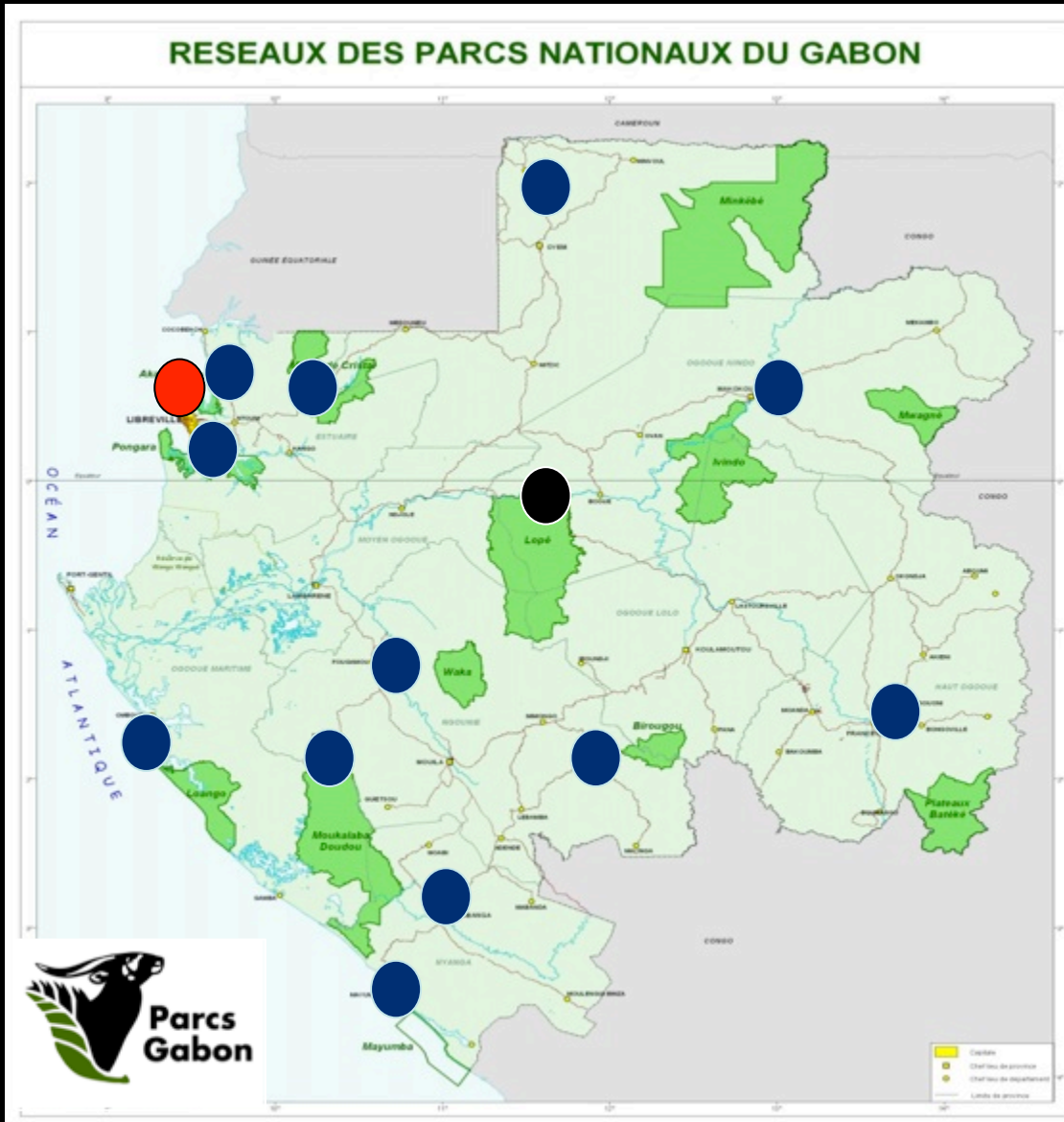




Kedrovya Pad-Leopardovii in Russia: Results for 3 years following LEM implementation

Type of LE action	Increase in reported cases
Fire-arm confiscation	X 2.0
Poaching evidence	X 2.5
Other violations	X 4.8
Fines issued	X 7.2

Improving national decision making: Gabon



ACTUALITÉS



26/04/2013

ANPN

PROTECTION ET SURVEILLANCE/ DES EFFORTS CONSÉQUENTS POUR ASSURER LA SÉCURITÉ DES PARCS NATIONAUX ET DE LEURS RESSOURCES.



La Direction technique de l'Agence Nationale des Parcs Nationaux (ANPN) vient de publier le rapport des activités de lutte anti braconnage du premier trimestre 2013.

Il présente l'effort fourni par les équipes de Protection et de Surveillance pour garder le contrôle des territoires des parcs nationaux et garantir l'intégrité des ressources qui y sont mises en réserve.

Le document indique qu'en trois mois, 59 missions de 21 jours chacune ont été menées sur l'ensemble du réseau des parcs nationaux. Cela représente un effort de patrouille de 4065 homme/jours. Ces missions englobent les postes de contrôle fixe, les patrouilles mobiles, les expéditions pédestres de reconnaissance du territoire, les missions de collecte de données sur les activités anthropiques, les activités d'information et de sensibilisation des populations ainsi que les missions de collecte des données à caractère biologique.

26/04/2013

CONSERVATION/ Un conservateur sénior disparu en forêt dans le Parc National de la Lopé

26/04/2013

PROTECTION ET SURVEILLANCE/ Des efforts conséquents pour assurer la sécurité des parcs nationaux et de leurs ressources.

22/04/2013

LUTTE CONTRE LE BRACONNAGE/ Les chiens renifleurs font leurs « premières victimes »

12/04/2013

LUTTE ANTI BRACONNAGE/ Les gendarmes à l'école de la forêt.

11/04/2013

SÉLECTION DE CONSULTANTS PAR LES BÉNÉFICIAIRES DE FINANCEMENT DE L'Accord de Conversion de Dettes France-Gabon.

08/04/2013

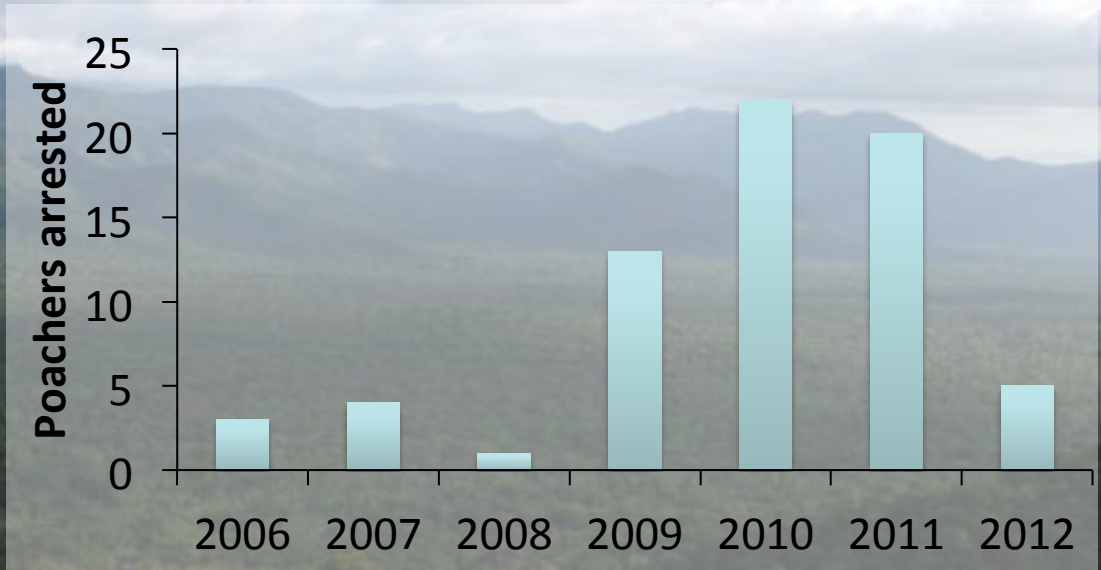
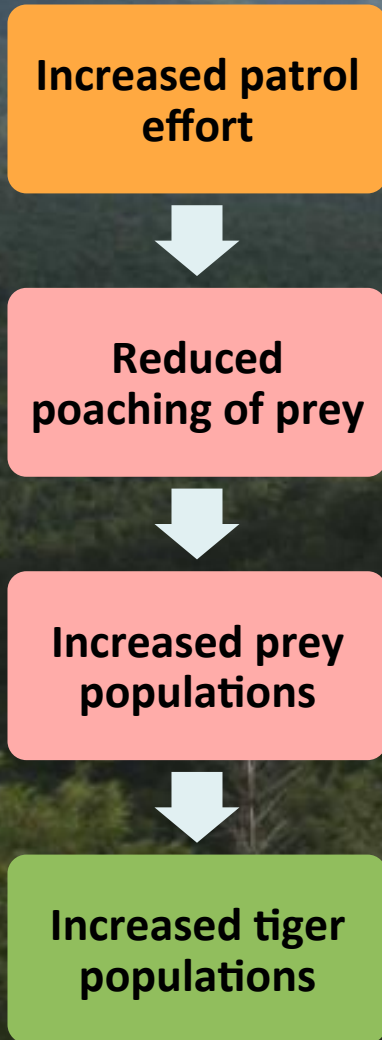
SUIVI ECOLOGIQUE/ Un buffle blanc « découvert » à Moukalaba Doudou.

08/04/2013

AGENCE NATIONALE DES PARCS NATIONAUX / SOLlicitation DE MANIFESTATIONS D'INTERET



Evaluating effectiveness by landscape



...and by species

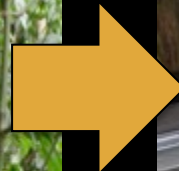


Not a silver bullet.....



Key areas for future development

Tactical → Operational tool



Improve reactivity and response time



WHY SMART?

Traditional tools, technologies and resources are not stemming the illegal killing and trading of endangered species. As a result threatened and highly valued biodiversity such as tigers, rhinos, elephants, great apes and their habitats are being lost.

[Learn More](#)

© JOHN GOODRICH / WCS



What is SMART?



Learn more about the SMART approach to improving conservation effectiveness

Why SMART?



Learn more about the need for SMART and why its unique

How can SMART work for you?



Learn how SMART works in the field and how it can benefit you or your organization

SMART News

SMART partners training of trainers workshop scheduled for 11th – 15th September, 2012 in Pretoria, South Africa.

RESOURCES

Download information about SMART here: [Smart Users](#) and [Smart Donors](#)

www.smartconservationtools.org