

Celebrating 10 Years of Achievement



Dr. Heather E. Eves, BCTF Director
Natalie D. Bailey, BCTF Assistant Director

Consensus Statement

CONSENSUS STATEMENT

CONSERVATION ORGANIZATIONS, ZOOLOGICAL PARKS, ANIMAL WELFARE ADVOCATES, AND MEDICAL RESEARCHERS **CALL FOR IMMEDIATE ACTION TO ADDRESS THE COMMERCIAL BUSHMEAT CRISIS IN TROPICAL AFRICAN COUNTRIES**

On 19 February 1999, 34 experts, representing 28 different organizations and agencies, assembled at the offices of the American Zoo and Aquarium Association (AZA) in Silver Spring, Maryland to discuss the commercial bushmeat crisis in tropical African countries and its impact on threatened and endangered species, particularly great apes. Participants in this meeting and many others in a growing worldwide network of concerned conservationists, zoo biologists, animal welfare advocates, and medical researchers, have developed the following consensus statement:

While we have our differences in approach, there is strong consensus that the commercial bushmeat trade in tropical African countries is having dire consequences, not only for wildlife, but also for people in Africa and throughout the world. If current unsustainable rates of exploitation continue, the commercial bushmeat trade will decimate, if not eliminate, some endangered species, such as great apes, forest elephants, and other fauna upon which the health of forest ecosystems

depend. Indeed, it may have already caused the extinction of Miss Waldron's red colobus monkey, which formerly existed in the forested zones of Ivory Coast and Ghana.



The African great apes—chimpanzees, gorillas, and bonobos—are at particular risk.

Founding Steering Committee

- Michael Hutchins, Ph.D./ Chair, AZA
- Christine Wolf/Vice-Chair, Fund for Animals
- Mohamed Bakarr, Ph.D./CI-CABS
- Richard Carroll, Ph.D./WWF-US
- Stewart Hudson/Jane Goodall Institute
- Russ Mittermeier, Ph.D./CI
- Andrew Plumptre, Ph.D./WCS
- Anthony L. Rose, Ph.D./Biosynergy Institute
- David S. Wilkie, Ph.D./Boston College
- Heather E. Eves/BCTF

BCTF GOALS 2000-2004

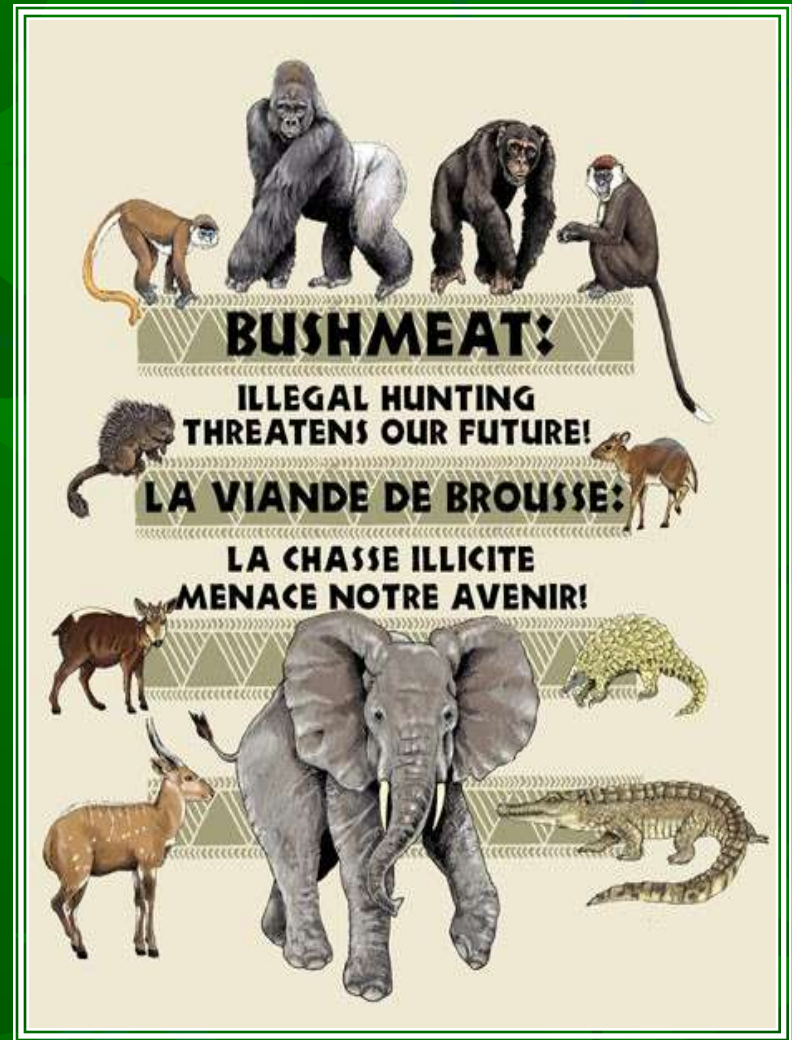
- Enable information sharing and create an information sharing mechanism on the bushmeat issue
- Engage key decision makers in the United States, Europe and Africa
- Build awareness and provide education across sectors
- Foster collaboration among member and partner institutions that effectively address the unsustainable bushmeat trade

BCTF VISION

Eliminate the unsustainable, illegal, commercial bushmeat trade through the development of a global network that actively informs and supports nations, organizations, scientists and the general public

BCTF MISSION

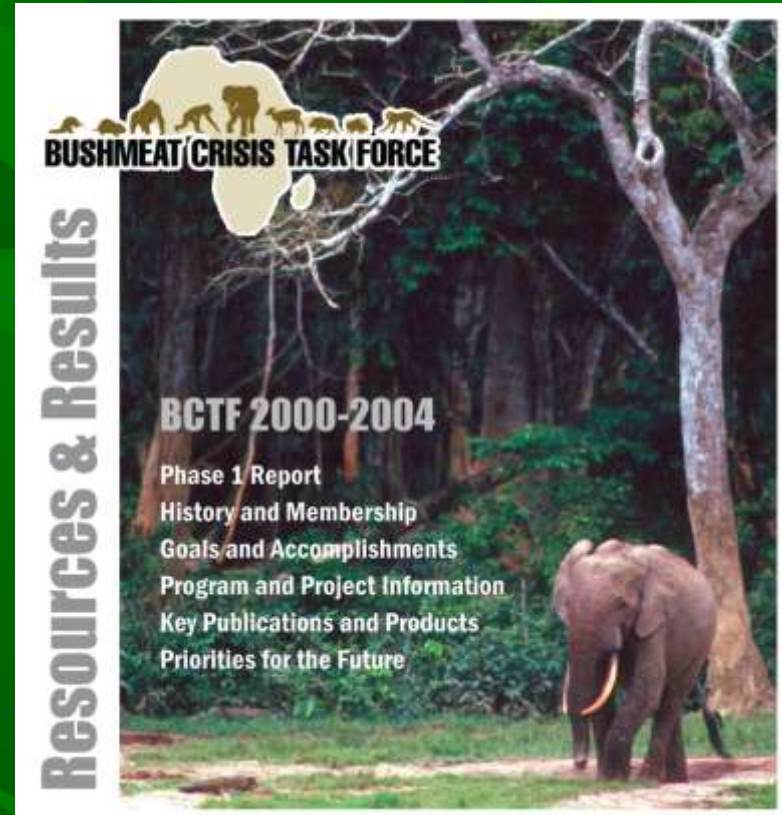
To build a public, professional and government constituency aimed at identifying and supporting solutions that effectively respond to the bushmeat crisis in Africa and around the world



BCTF's Approach

BCTF members work individually to support actions in the field that directly address human and wildlife impacts of the bushmeat crisis...

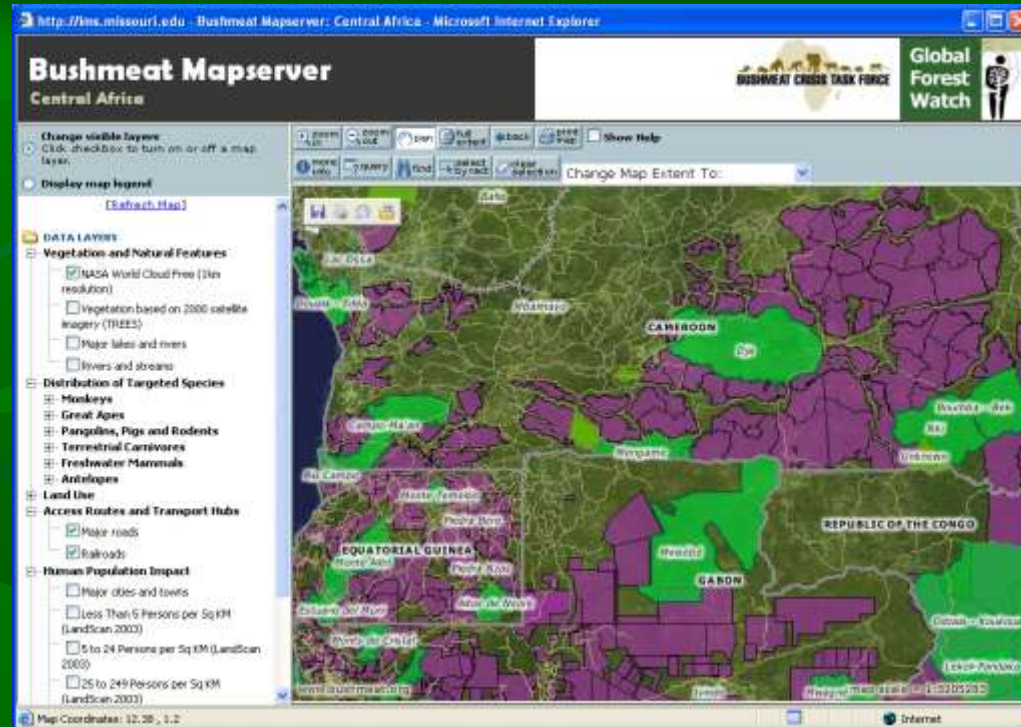
...and work together through the BCTF project to **MANAGE INFORMATION** towards our goals of **ENGAGING KEY DECISION MAKERS, FACILITATING EDUCATION AND TRAINING** and **RAISING PUBLIC AWARENESS.**



Knowledge

1951 to 1999	2009
137 peer reviewed publications	600+ peer reviewed pubs
35 scientific reports – mainly regarding commercial trade in southern Africa	200+ reports, with many focused on Central and West Africa
Until late 80's, the focus was on wildlife as a source of income and protein	Focus has been on: <ul style="list-style-type: none">➤ Applied research➤ Sustainability➤ Animal welfare➤ Human livelihoods➤ Health & disease➤ Global trade

Bushmeat IMAP & Central Africa Mapperserver



BUSHMEAT CRISIS TASK FORCE

SUPPORT BCTF

About BCTF ▾ Bushmeat & Wildlife Trade ▾ Maps & Research ▾ Education & Awareness ▾ Search

Mission, Vision, Goals
Consensus Statement
Operational Guidelines
Supporting & Contributing Members
Executive & Steering Committee
Staff
Contact Us

BCTF is a consortium of conservation organizations and scientists dedicated to the **conservation of wildlife populations** threatened by commercial hunting for sale as meat.

[Learn More](#)

Bushmeat in Depth BCTF News

Cameroon: 15 arrested for poaching
May 11, 2009

What is the Crisis?

What is Bushmeat? In Africa, forest is often referred to as 'the bush', thus wildlife and the meat derived from it is

Bushmeat.org 3.0 coming soon!

Capacity 1999

1999

Field staff & some academics

Handful of activists

Few education projects in early stages

Project funding not widely available



Capacity 2009



...a regional approach to address the bushmeat problem in eastern Africa



Policy

1999

CITES COP 11 – Doc 11.44

Great Ape Conservation Act

USAID & CARPE

Yaoundé Declaration

2009



**Congo Basin
Forest Partnership**



Action

1999

2009

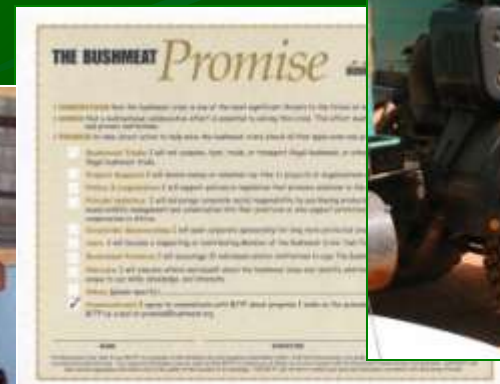
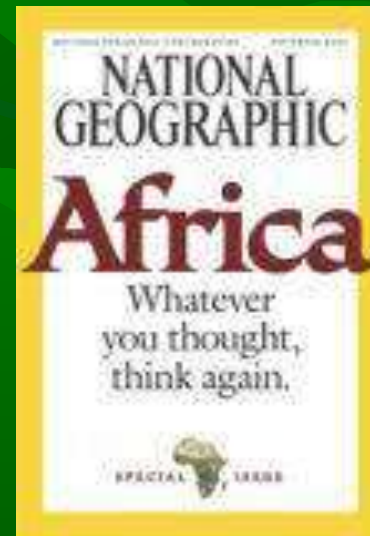
Little media coverage

Day-to-day work by field practitioners

Few working groups

Early projects on logging concessions

Little high-level awareness or action



BCTF

2000	2005	2009
8 Supporting and Contributing Members	34 Supporting and Contributing Members	26 Supporting and Contributing Members
1 Full time staff	3 Full time staff	1.25 Full time staff
Based at AZA	Based at WCS	Based at Multiple Institutions
Website: 10,000 hits per year	Website: 12,000 hits per month	Website: thousands of visitors from 80+ countries
Africa: Archives and Databases	Africa: Interactive Information Sharing Mechanism	Africa, Asia, US: Monitoring Bushmeat Project Impacts and Outcomes
35 listserv members	350 listserv members	Over 350 listserv members

BCTF Staff, Interns & Volunteers



SUPPORTING MEMBERS

Association of Zoos & Aquariums
Cleveland Metroparks Zoo
Columbus Zoo and Aquarium
Conservation International – Center
for Applied Biodiversity Science
Disney Wildlife Conservation Fund -
Disney's Animal Kingdom
Jane Goodall Institute
Indianapolis Zoo
Sedgwick County Zoo
Toronto Zoo
Wildlife Conservation Society
World Resources Institute
World Wildlife Fund (US)
Zoological Society of San Diego

CONTRIBUTING MEMBERS

African Wildlife Foundation
American Society of Primatologists
Cheyenne Mountain Zoo
Dallas Zoo
Detroit Zoological Park
Dian Fossey Gorilla Fund International
Little Rock Zoo
Louisville Zoological Garden
Maryland Zoo in Baltimore
Oakland Zoo
Oregon Zoo
Philadelphia Zoo
Woodland Park Zoo
Zoo New England

BCTF Steering Committee

SUPPORTING MEMBER REPRESENTATIVES

Schaneé Anderson, Sedgwick County Zoo
Elizabeth Bennett, Wildlife Conservation Society

Matthew Lewis, World Wildlife Fund, US
Keith Brown, Jane Goodall Institute
Kathy Lehnhardt, Disney's Animal Kingdom
Pam Dennis, Cleveland Metroparks Zoo
Steve Olson, Association of Zoos & Aquariums

William Rapley, Toronto Zoo
Rebecca Rose, Columbus Zoo & Aquarium
Tracy Farrell, Conservation International
Janette Wallis, American Society of Primatologists

2005-2009 SC ADVISORS

Michael Hutchins, 2000-2001 Chair, 2002-2004 Co-chair
David Wilkie, 2002-2004 Co-chair
Christine Wolf – 2004-2005 Co-Chair

EXECUTIVE COMMITTEE OFFICERS

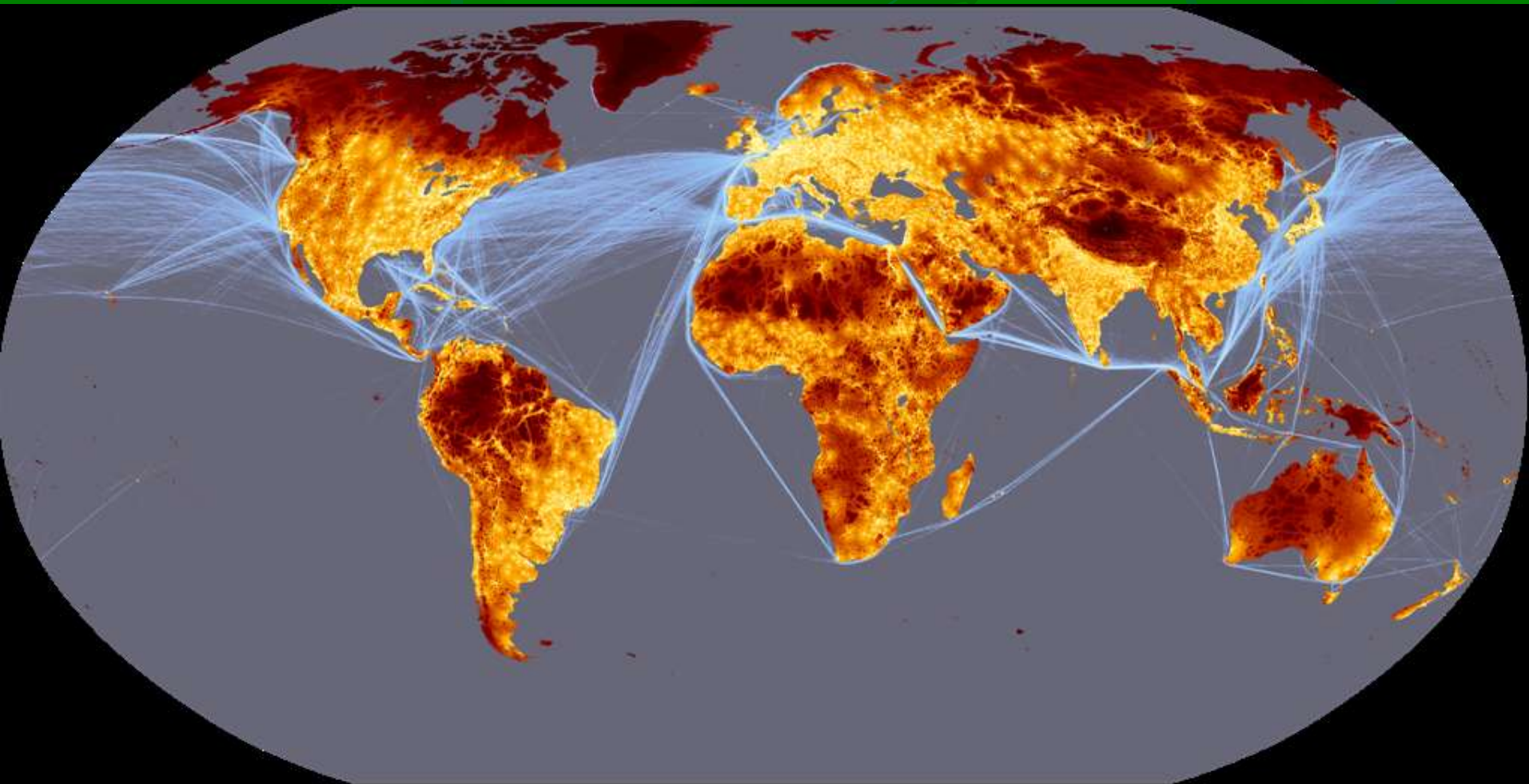
Elizabeth Bennett - Co-Chair
Tracy Farrell - Co-Chair

PRIORITY AREA CHAMPIONS

Keith Brown – Education & Training
Janette Wallis – Public Awareness
Reg Hoyt - Information Management
Steve Olson - Key Decision Makers

GENERAL MEMBERSHIP REPRESENTATIVES

Bryan Carroll, Bristol Zoo Gardens, UK
Samuel Fopa, Bushmeat Crisis Discussion Group, Bafang, CAMEROON
Rebecca Hardin, University of Michigan, USA
Reg Hoyt, Forest Partners International, USA
Leo Niskanen, IUCN/SSC African Elephant Specialist Group, Nairobi, KENYA



We are all connected

<http://www-tem.jrc.it/accessibility>

BCTF's Legacy

Before BCTF

- Handful of scientific experts
- A few activists
- No significant action
- No stakeholder consensus

Since BCTF

- Dramatic increase in professional focus on the bushmeat issue
- Consensus understanding of causes, impacts and solutions to the bushmeat crisis
- International and national policy initiatives
- Public awareness campaigns globally
- Field research and interventions greatly expanded



THANK YOU!

The Bushmeat Crisis Task Force thanks you for your support and your work to protect wildlife and human communities affected by the unsustainable bushmeat trade. Join us in celebrating our 10th Anniversary and our collective accomplishments! www.bushmeat.org