

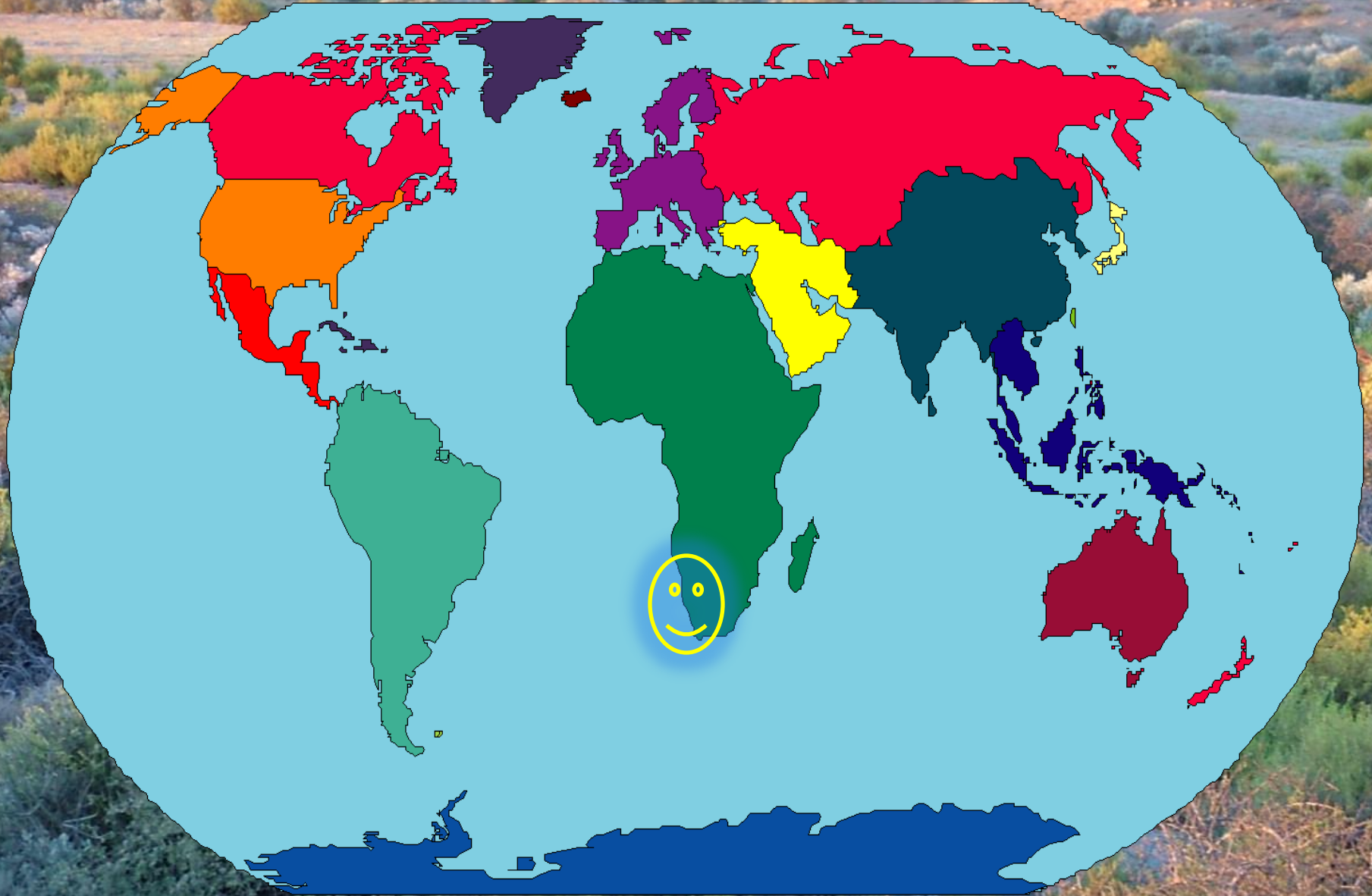
*Adaptation in  
Namaqualand*

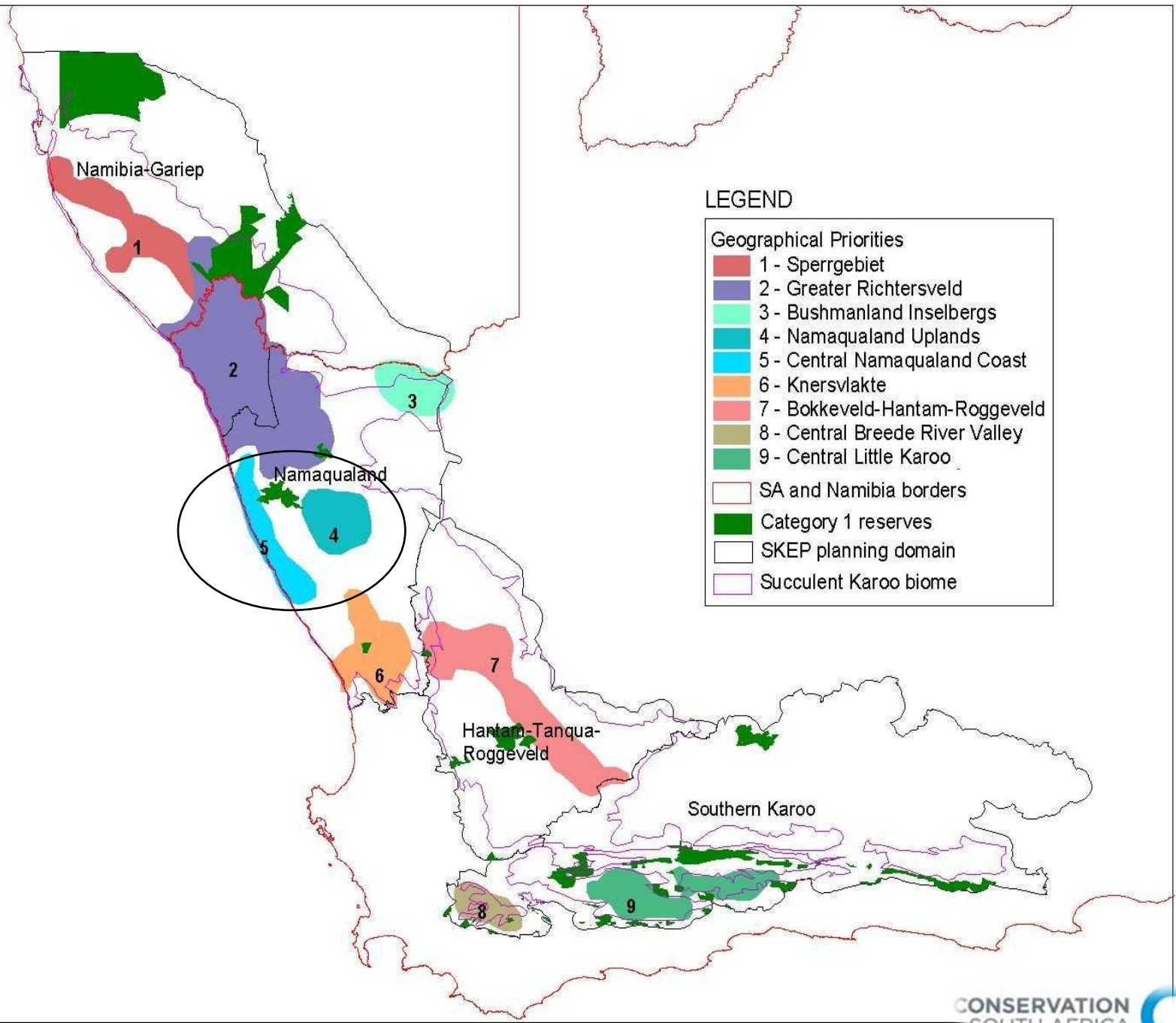
**CONSERVATION SOUTH  
AFRICA**


*Restoring resilience through  
restoration and innovation*

The World

Robinson Projection







## ***2010-2015 Strategy:***

**To promote and support conservation, restoration, and sustainable land use in SA's Hotspots as an essential element of:**

- **food security and land reform,**
- **green economic development, and**
- **building resilience to the impacts of climate change.**

## Contributing to food security

### and land reform...

*By 2020, sustainable farming practices that contribute to food security and support successful land reform are adopted by government and agricultural industry bodies and farmers are implementing good practice on 20% of the land within the SA Hotspots.*

## Greening economic development...

*By 2020, the SA government is pursuing an environmentally-based low carbon approach to economic development and CSA-supported initiatives in the Hotspots are creating important demonstrations and learnings for greening economic development at a range of scales.*

## Building resilience to climate change...

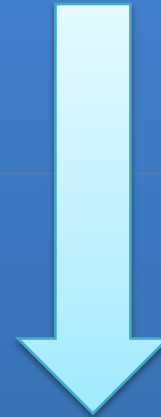
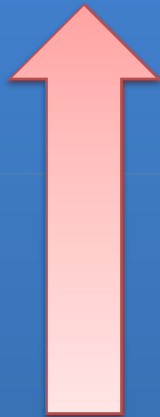
*By 2020, government and donors have integrated ecological approaches into their strategies for responding to climate change, and CSA has supported the maintenance and restoration of ecosystem services, particularly water catchments and habitat linkages for optimal flora and faunal persistence, through the empowerment of private and communal land stewards in three mega-corridors (>300,000 ha).*

# Our

# Strategies...

**Enabling Environment**

Influence and support local and national government to implement appropriate and proactive policies, laws, and programmes.




Empower individuals, communities, and corporations to become active stewards of their land and water resources.

**Implementation**





- 
- ☀️ South Africa will be one of the countries worst impacted
  - ☀️ Northern Cape will be the most affected Province
  - ☀️ Namaqualand - predicted to change from a semi-desert to a desert
  - ☀️ Large proportion of SA population has low resilience to extreme climate events (poverty; high disease burden; inadequate housing infrastructure and location)
  - ☀️ Significant proportion of surface water resources already fully allocated
  - ☀️ lower and less seasonal rainfall
  - ☀️ higher temperatures
  - ☀️ higher wind speeds
  - ☀️ There have been early warning signs
  - ☀️ Municipalities 13 of the 25 Northern Cape municipalities -3 Adopted
  - ☀️ Agriculture will impacted -reduced water & increased temperatures
  - ☀️ A fragile, semi-arid ecosystem
  - ☀️ Few economic alternatives
  - ☀️ Mining downscaling
  - ☀️ Dramatic food and water insecurity

# What we know/Challenges



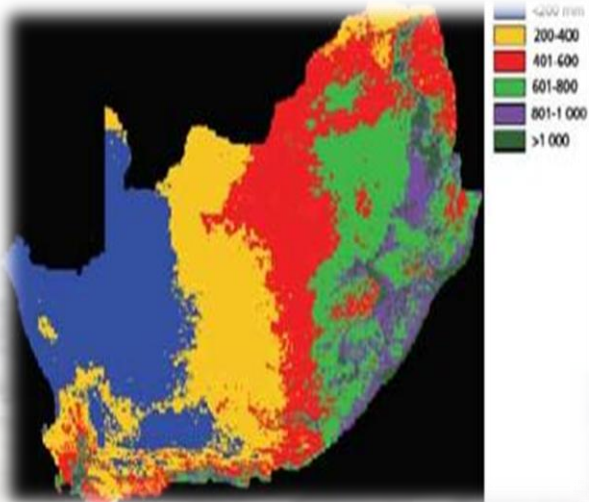


- Indiscriminate burning
- Ploughing/overgrazing of wetlands
- Overgrazing
- Alien trees
- Irresponsible Mining
- Extreme increase in temperature
- Indiscriminate predator control



# What we know/Challenges

# What we have



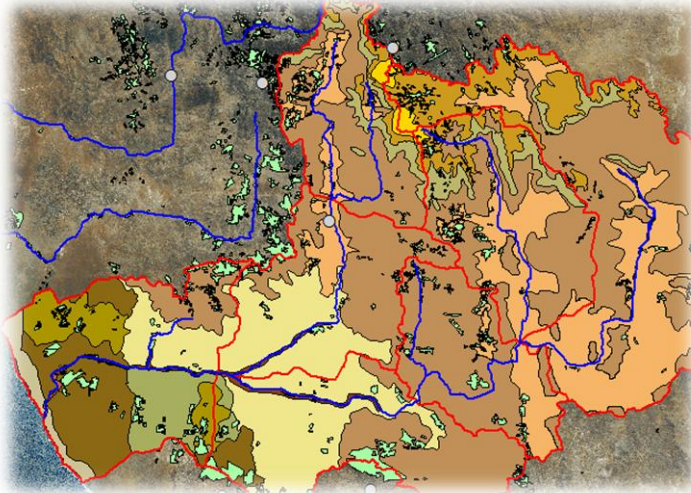
**EFFECTS ON RAINFALL SEASONALITY, PATTERNS and INTENSITY**

**Shift to the East, possibly more intense and unseasonal**

**Affects any sector depending on water**



**Bioregional plan and policy frameworks...**



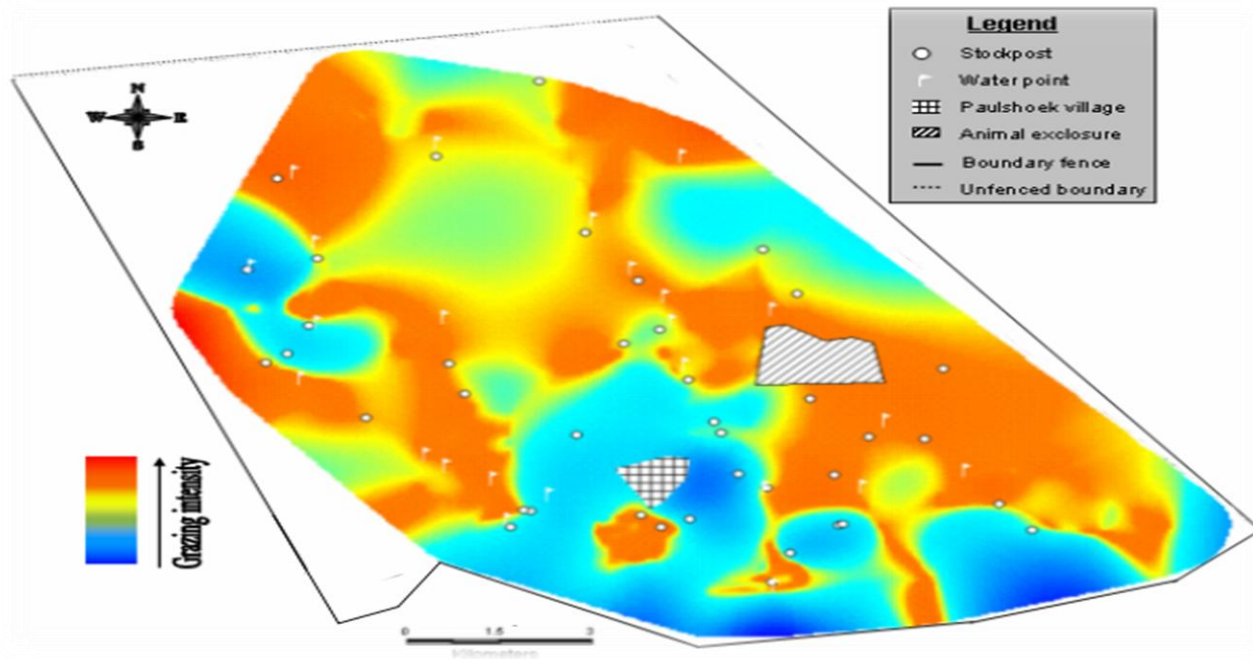
**Catchment mapping and wetland prioritisation for 3 of 5 major catchments**

## Understanding of cultural linkages...



<p><b>•Economic benefits</b> A source of revenue for poor people</p>	<p><b>•Cultural benefits</b> Maintenance of traditional skills and practices</p>	<p><b>•Empowerment benefits</b> Opportunity for people to use their existing skills to increase their level of empowerment</p>	<p><b>•Social exchange</b> Opportunity for socializing during the production of crafts</p>	<p><b>•Utility benefits</b> Low-cost sitting, sleeping and eating surfaces and storage containers</p>	<p><b>•Environmental benefits</b> Maintenance of native wetland vegetation and associated indirect benefits</p>
--	--	--	--	---	---

# Monitoring methodologies...



## Restoration Analysis of Priorities...

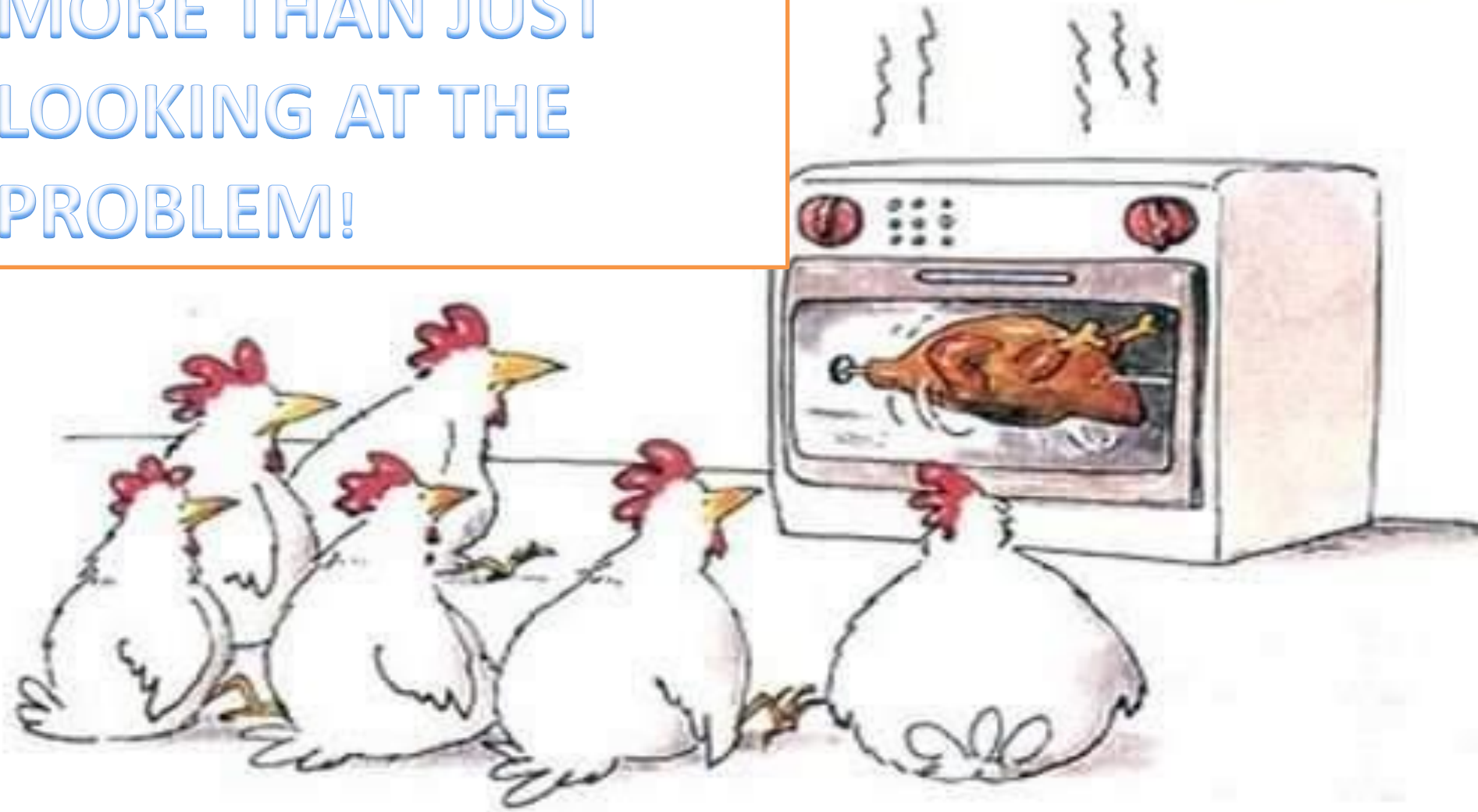
**Restoration Approach:** Grazing control

**Wetland type:** Wetlands being grazed especially by livestock

**Benefits:** Plants can regrow, flower and seedlings can establish

**Costs:** Fencing is expensive and prevents land users from accessing resources

ADAPTATION IS  
MORE THAN JUST  
LOOKING AT THE  
PROBLEM!



# *What we are doing...*

## **Biodiversity and Red Meat Initiative**

- **Guideline development**
- **Contract negotiation**
- **Provision of benefits (training, dogs, wind pumps)**
- **Compliance monitoring**
- **Governance model**



- **Jobs (monitoring officers)**
- **Wetlands restored – more water security**
- **Grazing lands better managed – food security**
- **Community more control over fire**
- **Stocks safeguarded against losses from damage causing animals**
- **Premium price for stock sold**
- **Water points and roads restored**
- **Skills & increased understanding of ecosystem**
- **Better land management = less degradation of biodiversity**
- **Flexibility to adapt and refine model**



# SKEPPIES

- Small grants fund in partnership with DBSA
- Technical and financial support to enterprise adaptation
- Three years, \$500,000 disbursed (CEPF, DBSA)
- 58 projects funded, 72,000ha conserved, 307 new jobs



Foundation for  
adaptation...

CONSERVATION  
CLIMATE DIAR SOUTH AFRICA  
2010



Member of the CI Network

# Restoring Ecological Infrastructure for Water and Grazing...

- For \$20,000
- 52 poplar trees removed
- 558 l of water per hour restored
- Supported community of 224 households for 2 months when municipal pipe broke





# Lessons Learned so far....

**Requires knowledgeable, committed, accountable and influential political leaders.**

**Communication strategy is key.**

**Continued engagement with stakeholders**

**Access to quality information that includes local knowledge.**

**Adaptation plans must be mainstreamed with new and existing plans.**

**Ensure a systematic and integrated adaptation process**

**Draw in relevant institutions –Agriculture etc-to determine actual value of things like grazing, water, etc**

**Very useful exercise- also shows farmers the real benefits they get from their own conservation actions in exchange for what they are giving up**

**Use an ecosystem based approach to adaptation that links to improving livelihoods and building resilience.**



## Scaling up.....

# What it means for us:

- EbA in Disaster Risk Management Plans
- Provincial and Namakwa Adaptation Plans to feed in to NAPA
- UNCCD Fund with GEF, DBSA, and DEA



But....





Marketing manager

Logistics manager

HR manager

Safety manager

Security manager

Communications manager

Project manager

QA/QC manager

Public Relations

Product development manager

me

We need sustained  
DOERS, not only  
CONCEPTUALISERS and  
MANAGERS

# Thank YOU!

