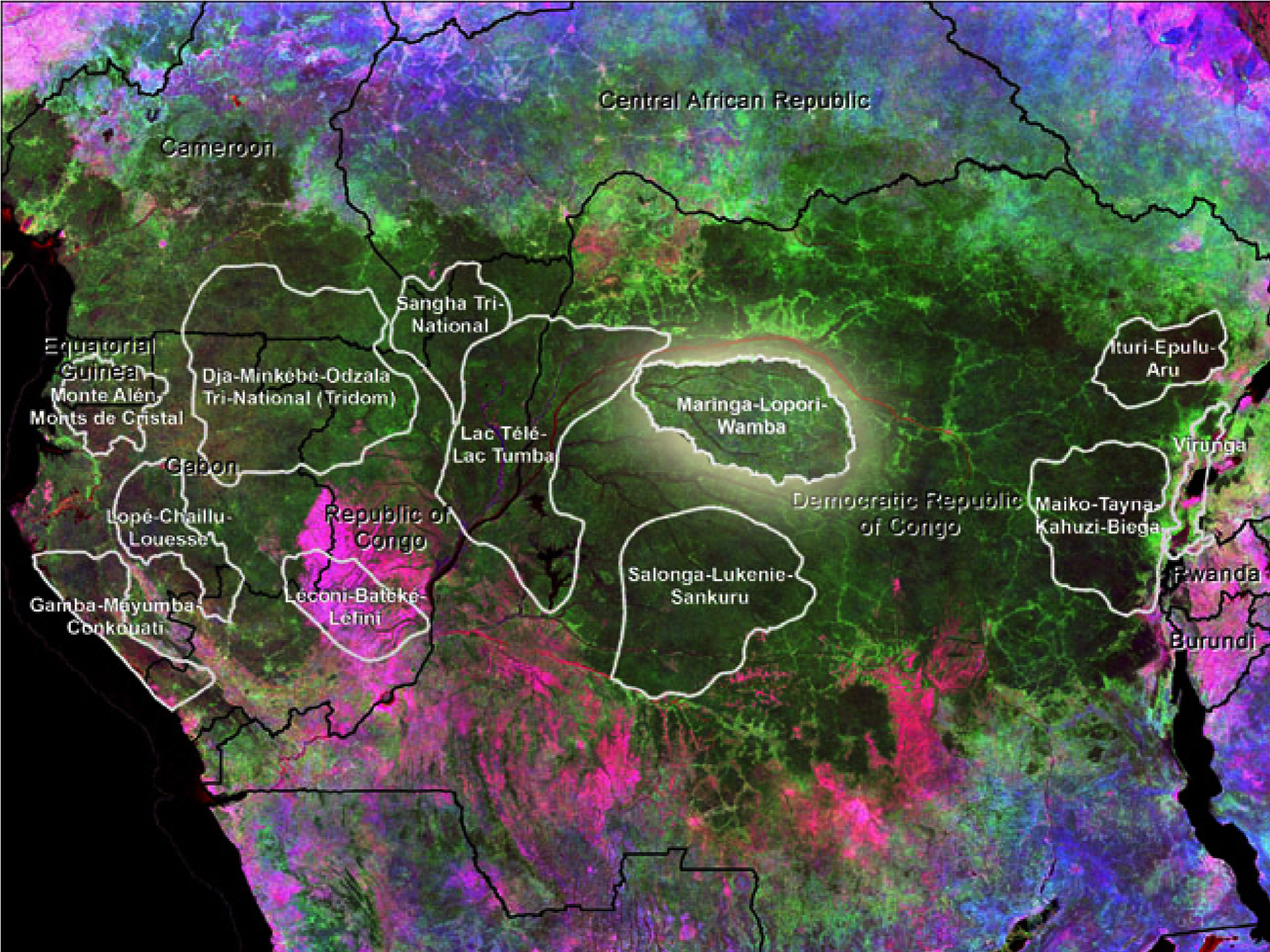




AFRICAN WILDLIFE FOUNDATION®

# The Nexus of Biodiversity Conservation and Law Enforcement: the case of Maringa-Lopori-Wamba landscape

Jef Dupain,  
USFWS- Wildlife Without Borders – Brown Bag  
Arlington, VA, October 17, 2012



Central African Republic

Cameroon

Equatorial  
Guinea  
Monte Alén  
Monts de Cristal

Dja-Minkébé-Odzala  
Tri-National (Tridom)

Sangha Tri-  
National

Lac Télé-  
Lac Tumba

Maringa-Lopori-  
Wamba

Ituri-Epulu-  
Aru

Gabon

Lopé-Chaillu-  
Louesse

Republic of  
Congo

Democratic Republic  
of Congo

Maiko-Tayna-  
Kahuzi-Biega

Virunga

Gamba-Mayumba-  
Cenkouati

Leconi-Bateke-  
Lefini

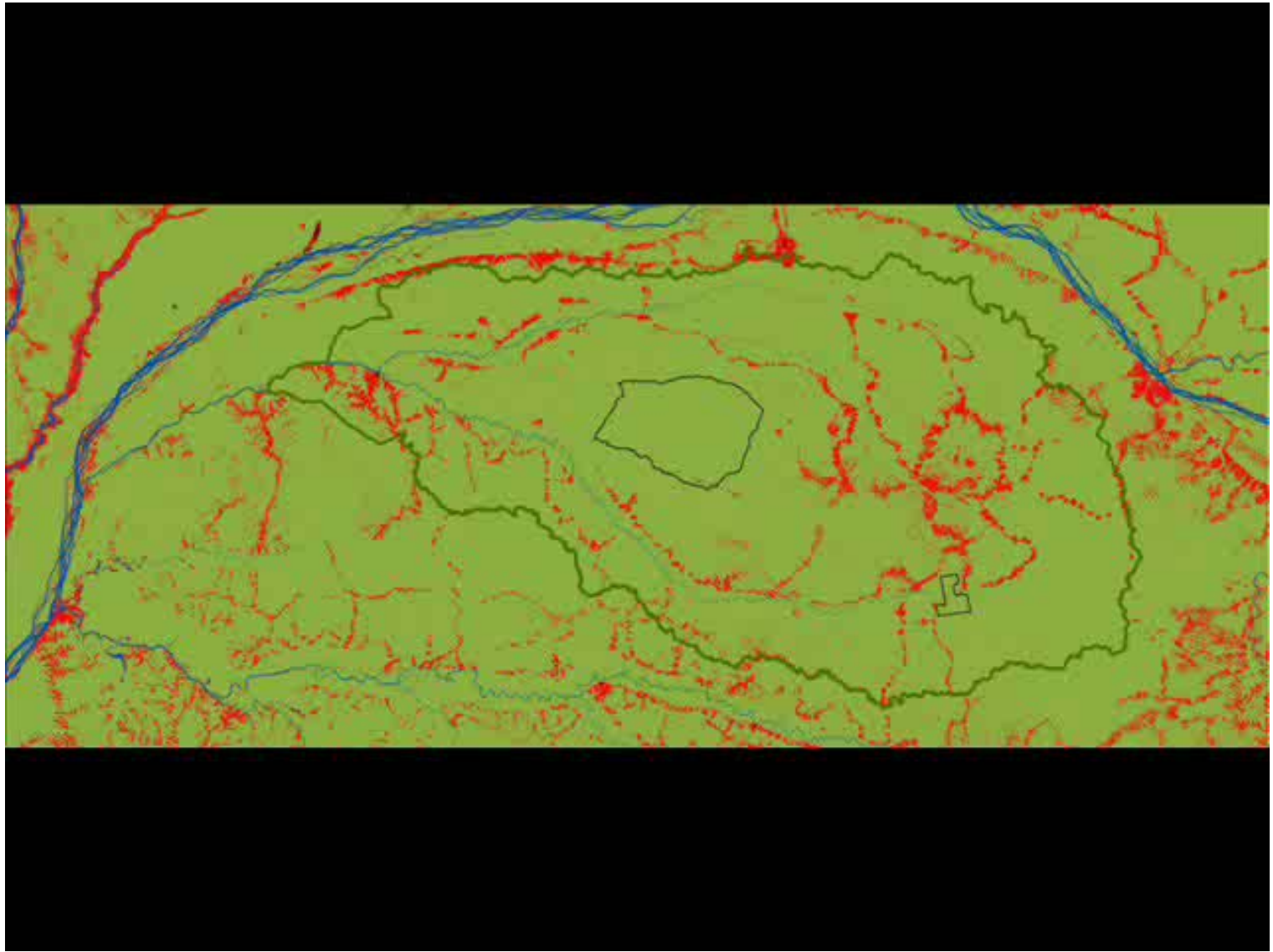
Salonga-Lukenie-  
Sankuru

Rwanda

Burundi

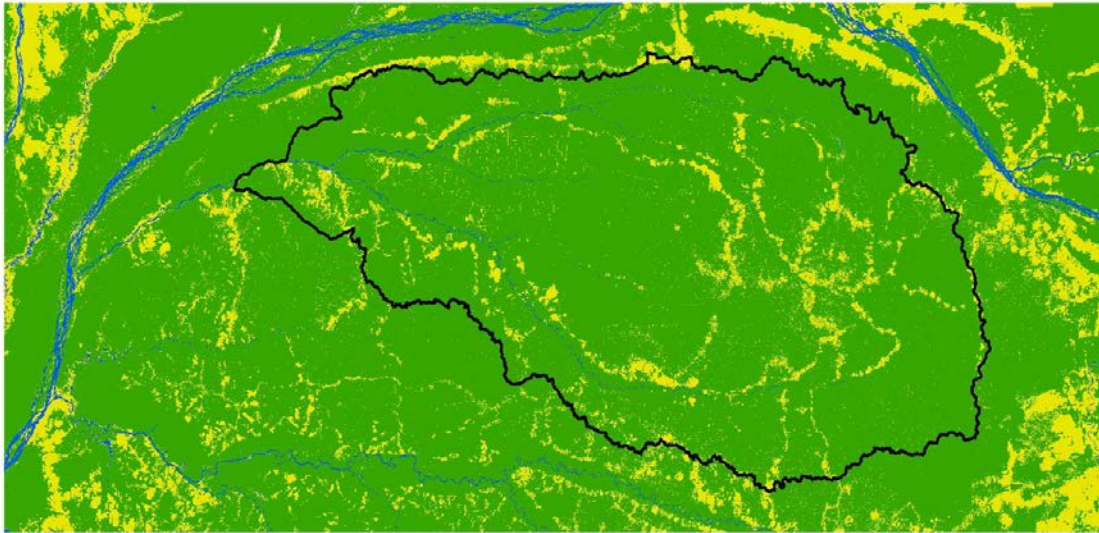
**STRATEGIC OBJECTIVE**  
**DECREASE DESTRUCTION OF HABITAT AND  
LOSS OF BIODIVERSITY THROUGH BETTER  
GOVERNANCE OF NATURAL RESOURCES WITH  
A FOCUS ON POVERTY REDUCTION**



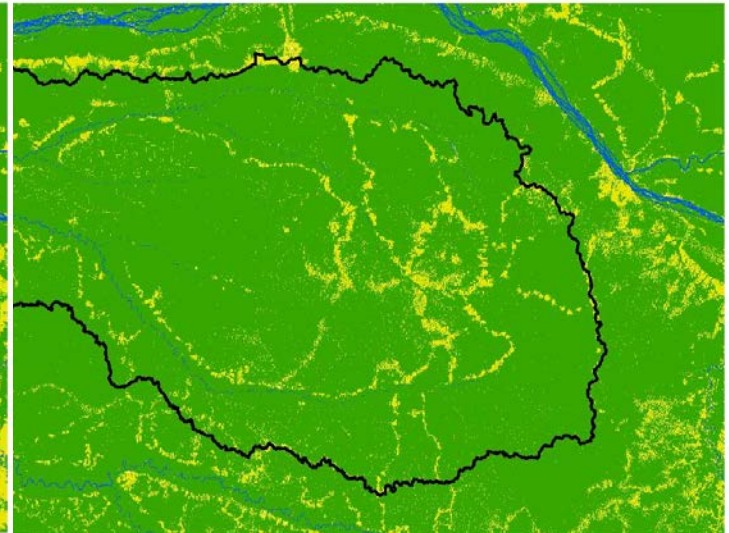


# Projected LUC MLW 2000-2050

## Idrisi's Land Change Modeler extension for ArcGIS



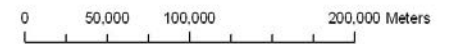
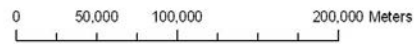
MLW: 2050



MLW: 2000

### Landcover

-  Forest
-  Rural Complex/Agriculture
-  Water



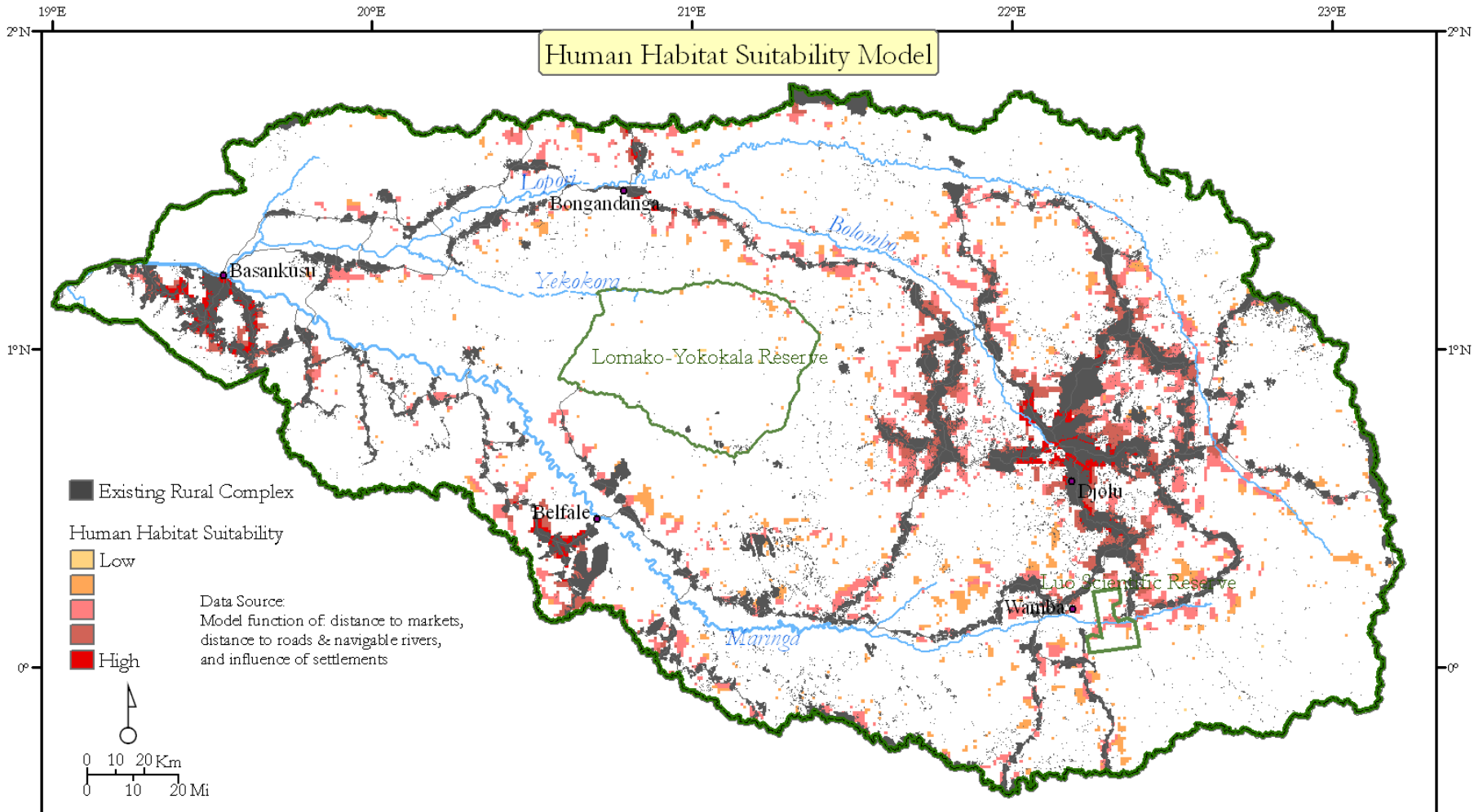
# Land Use Planning in MLW Landscape

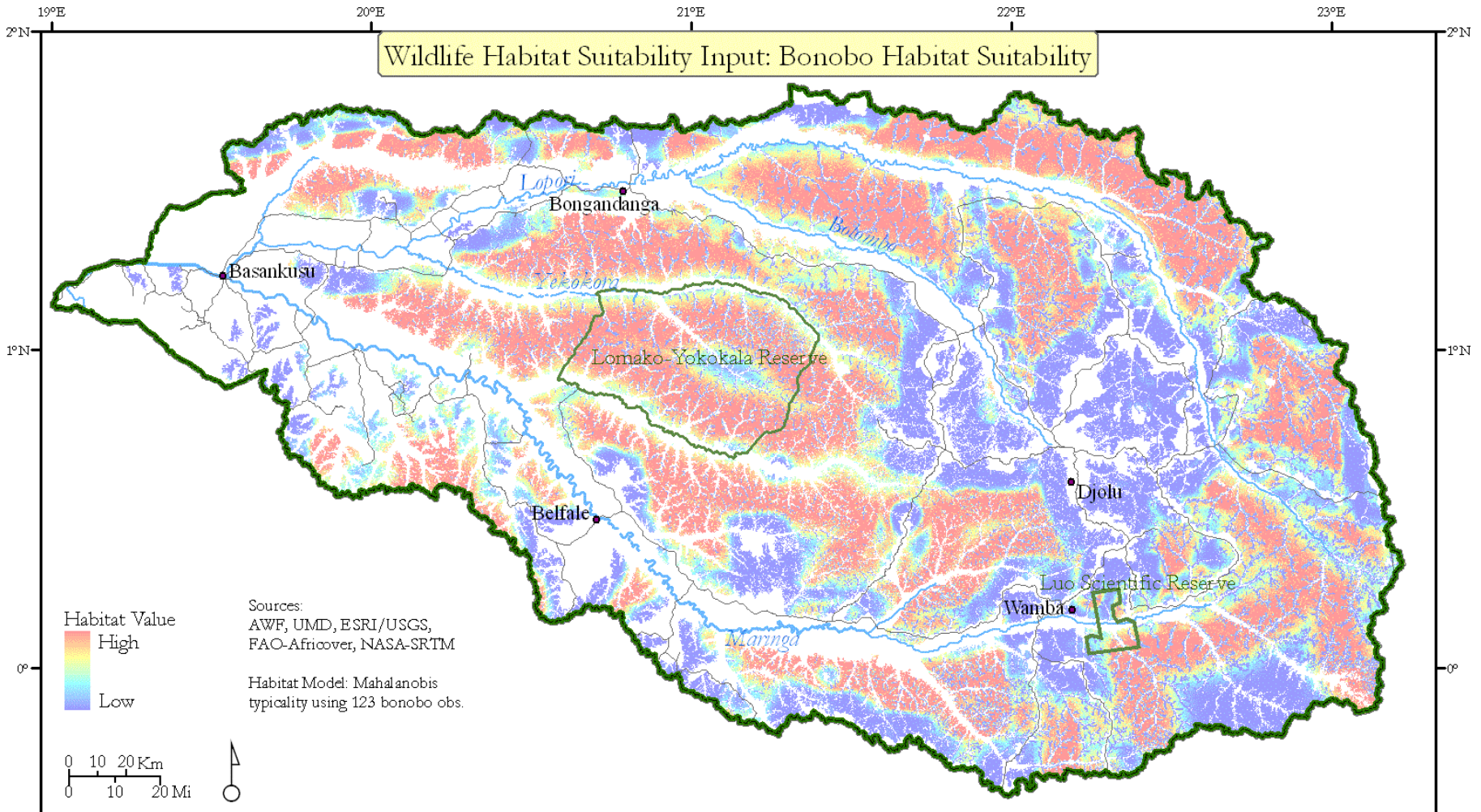


- The DRC government has formed a national-level Steering Committee to oversee the creation of a national-level land use plan (2009).
- MLW Landscape recognized as a pilot model for national-level planning

## Desired Outcomes of the MLW Land-use Planning Process

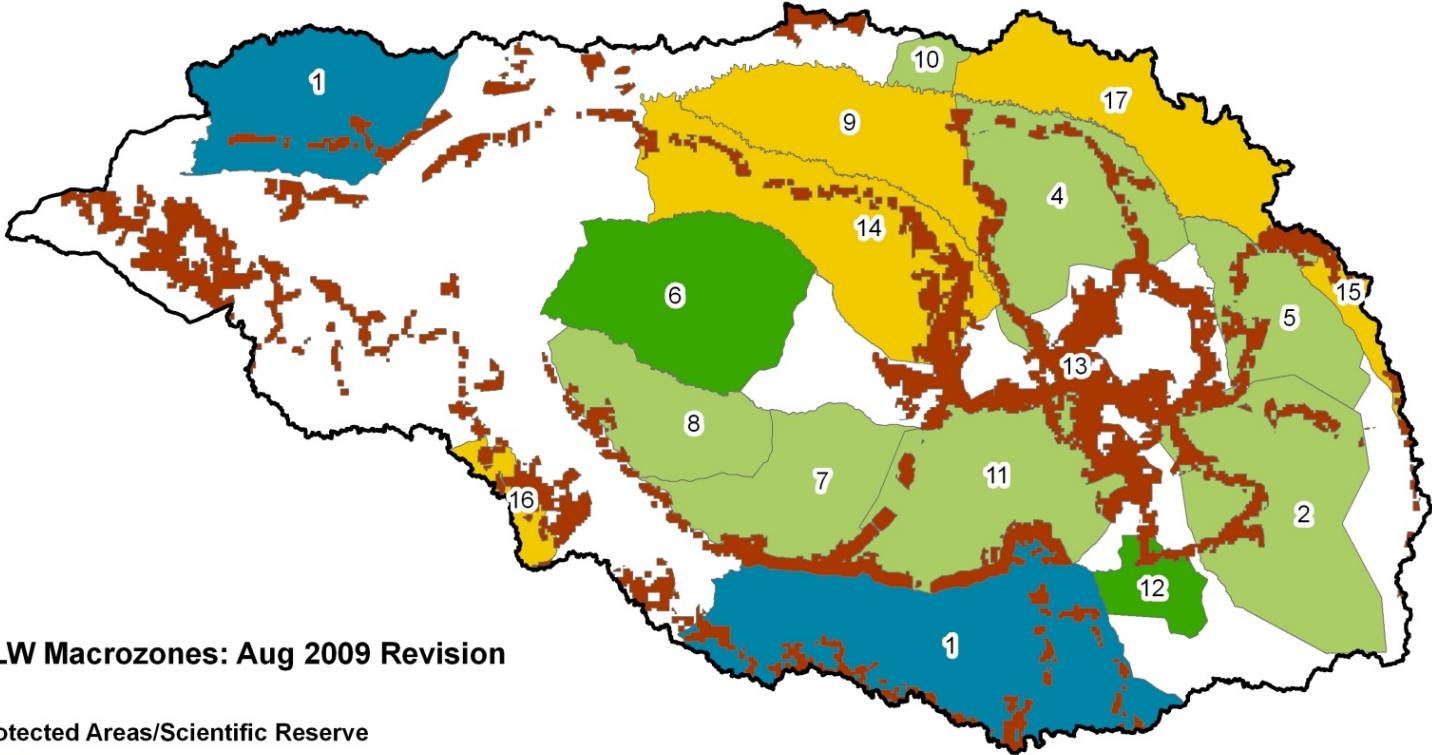
1. Create an **inter-connected network of protected areas** that ensures the viability of conservation targets;
2. Ensure enough **agricultural** land to satisfy the agricultural livelihood needs of local communities;
3. Ensure enough **forested** land to satisfy biodiversity habitat needs and sustain community NTFP livelihoods and social well-being.







# Zonage indicatif



**MLW Macrozones: Aug 2009 Revision**

**Protected Areas/Scientific Reserve**

- Lomako Faunal Reserve (6)
- Extension- Luo Scientific Reserve (12)

**Agricultural Zone**

- Sylvo-Agro Pastoral (13)

**Humid Zone**

- Wetlands (1)

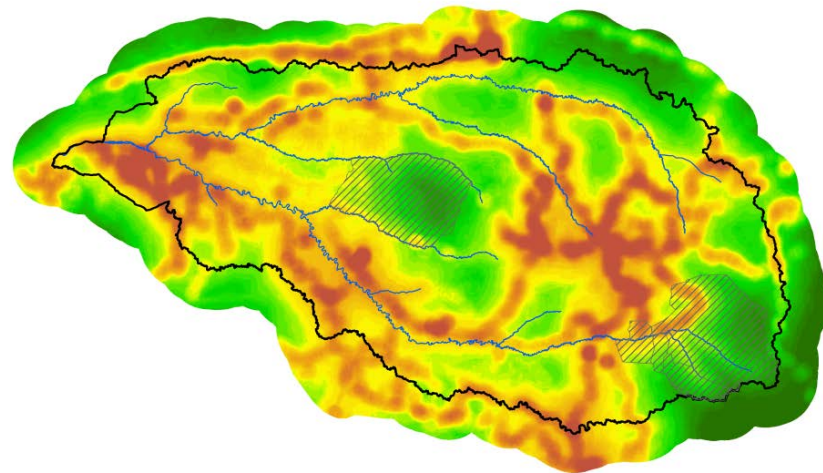
**Community Forests**

- Cadjobe CBNRMA (11)
- Corridor CBNRMA (7)
- Kokolopori (2)
- Lomako CBNRMA (8)
- Lopori Congo area (10)
- Yahuma area (5)
- Yala CBNRMA (4)

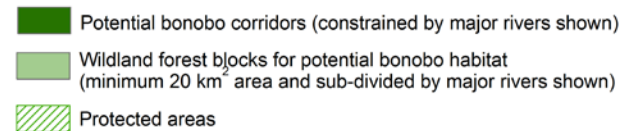
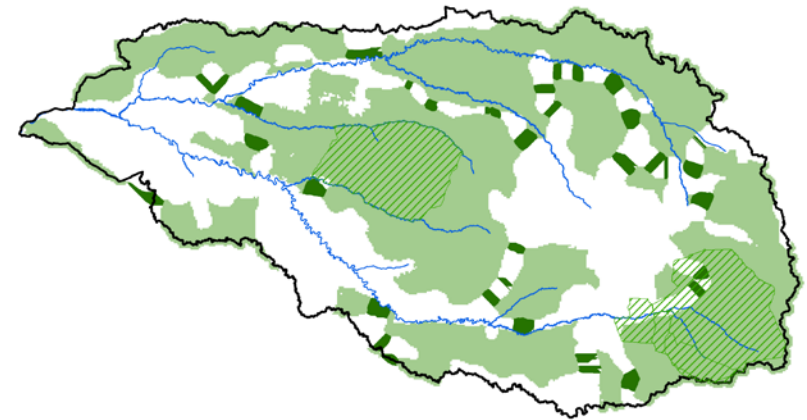
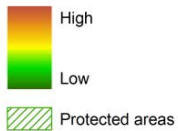
**Logging Concessions**

- CFT (15)
- SEDAFA (17)
- SIFORCO K7 (14)
- SIFORCO K2 (9)
- SOFORMA (16)

# Landscape-scale models inform conservation prioritization and planning



Intensity of human influence





Zone Sylvo-Agro-Pastoral  
Zone Développement Rural

Non permanente

Forêt protégée/CBNRMA

Permanente

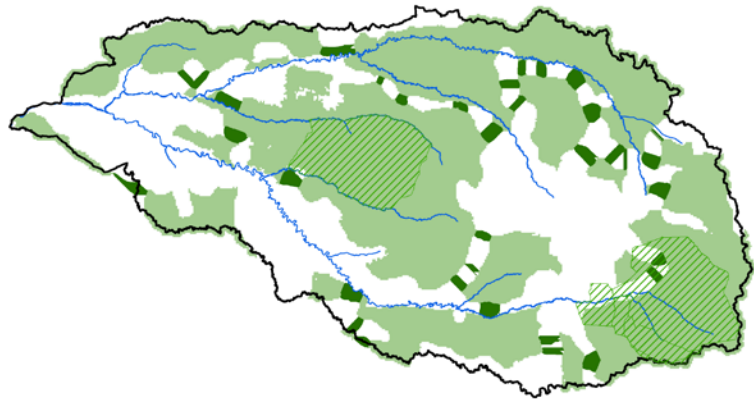
CBNRMA-fnp




Forêt à gestion communautaire  
CBNRMA-fp

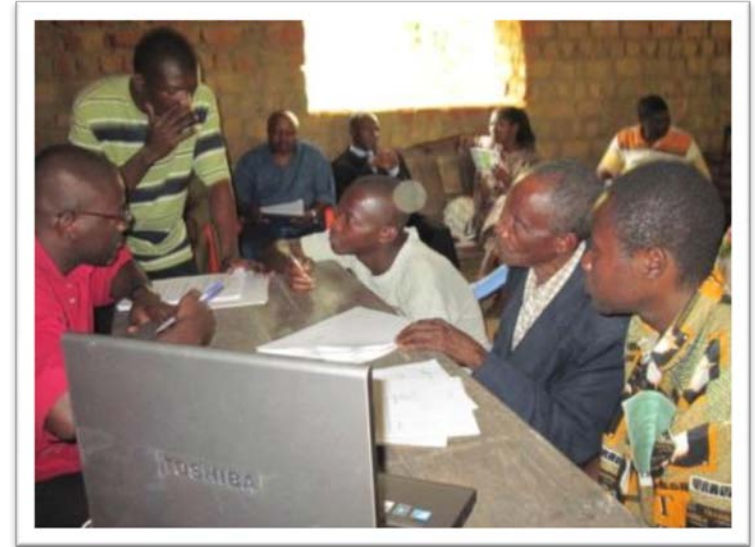


# Micro-Zoning in MLW Landscape: SOIL

Delineation of agriculture and permanent forest boundaries for local communities living around a key bonobo corridor between two protected areas.



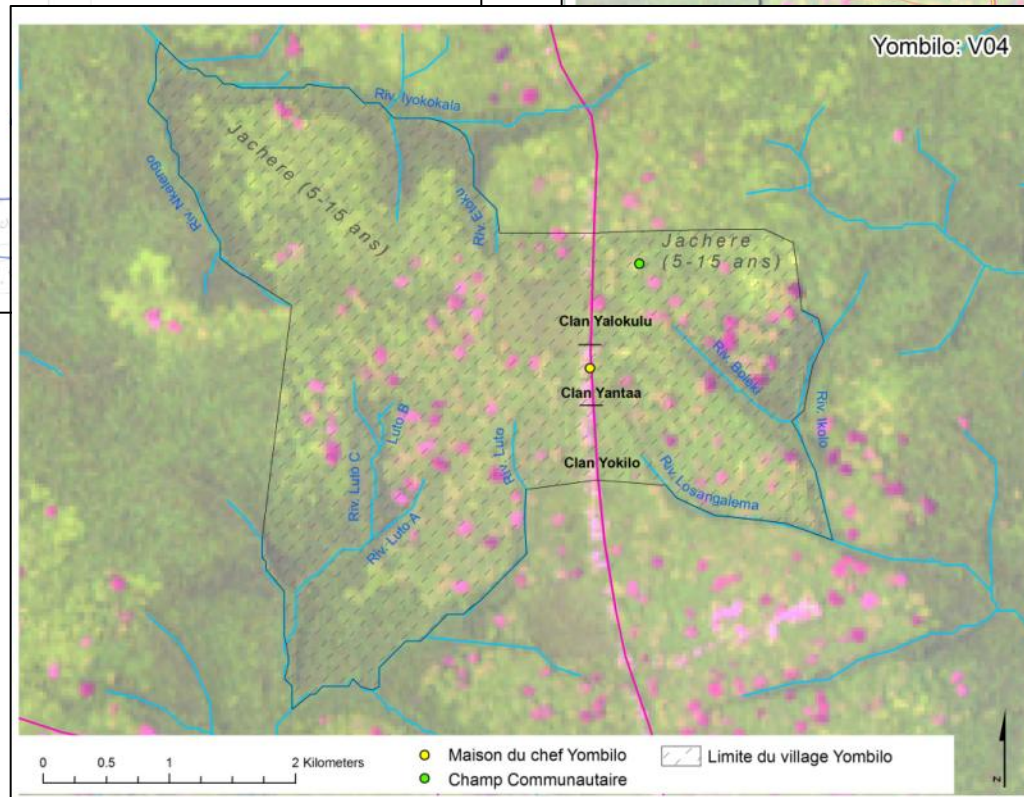
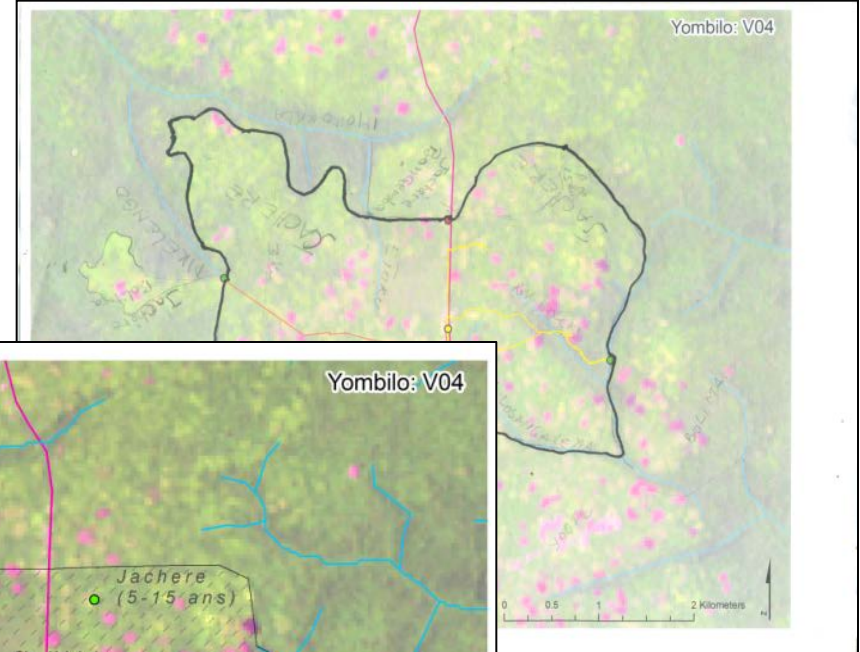
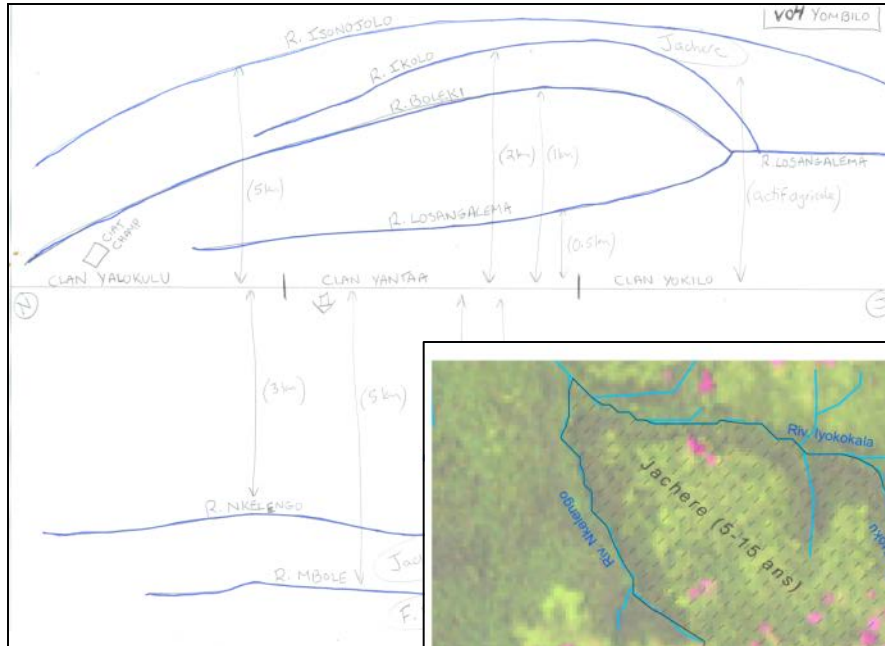
-  Potential bonobo corridors (constrained by major rivers shown)
-  Wildland forest blocks for potential bonobo habitat (minimum 20 km<sup>2</sup> area and sub-divided by major rivers shown)
-  Protected areas



- Village-level commitments through MOU process
- Livelihood improvement and poverty reduction: Quid-pro-quo (agricultural intensification, agro-forestry, access to markets)
- Formal recognition of zoning at national and sub-national levels

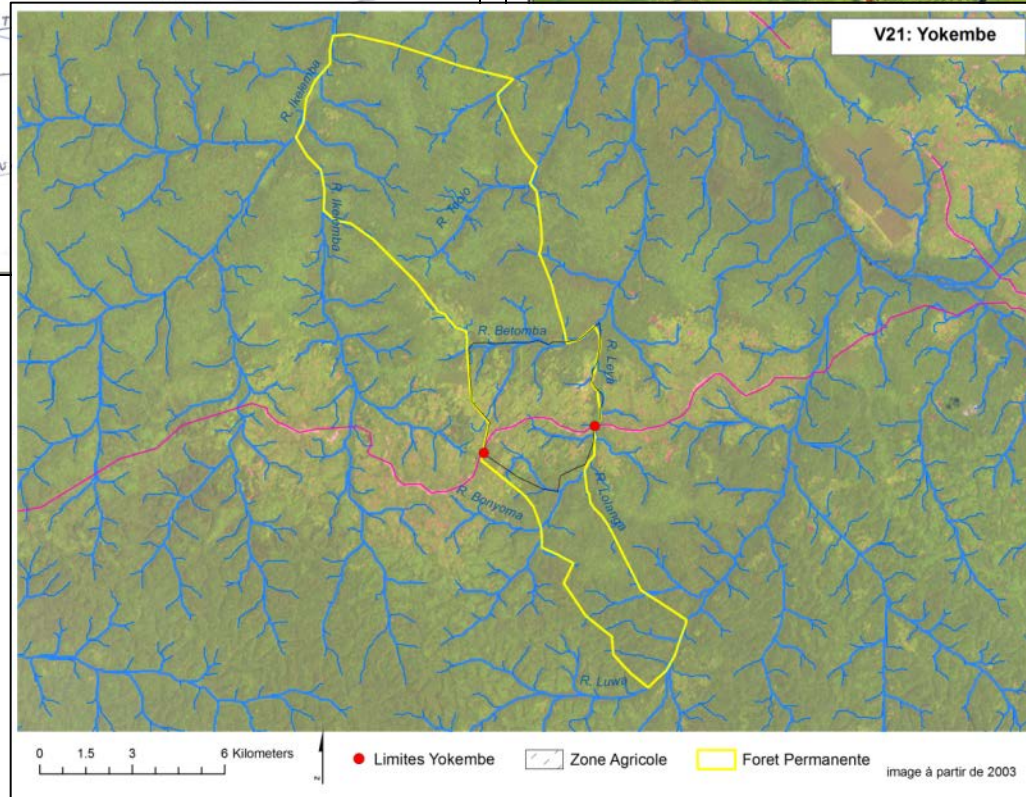
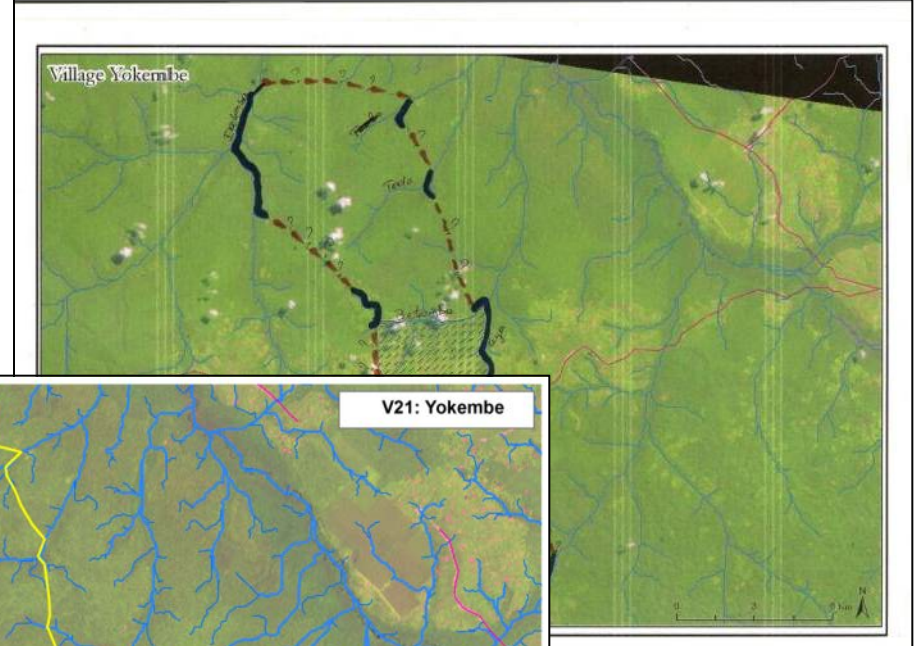
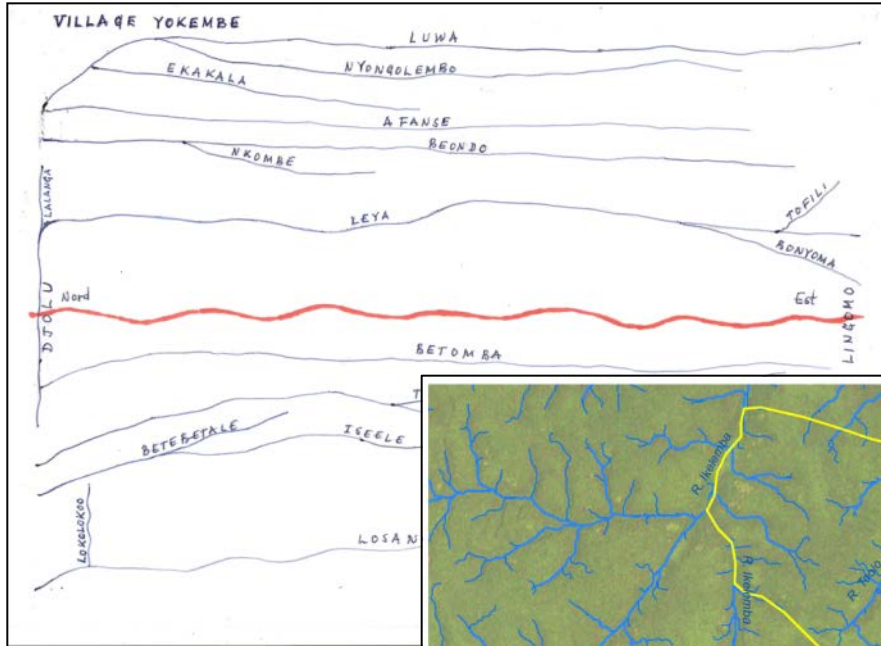
# Participatory Delineation of Micro-Zone Boundaries

## Agricultural Zoning

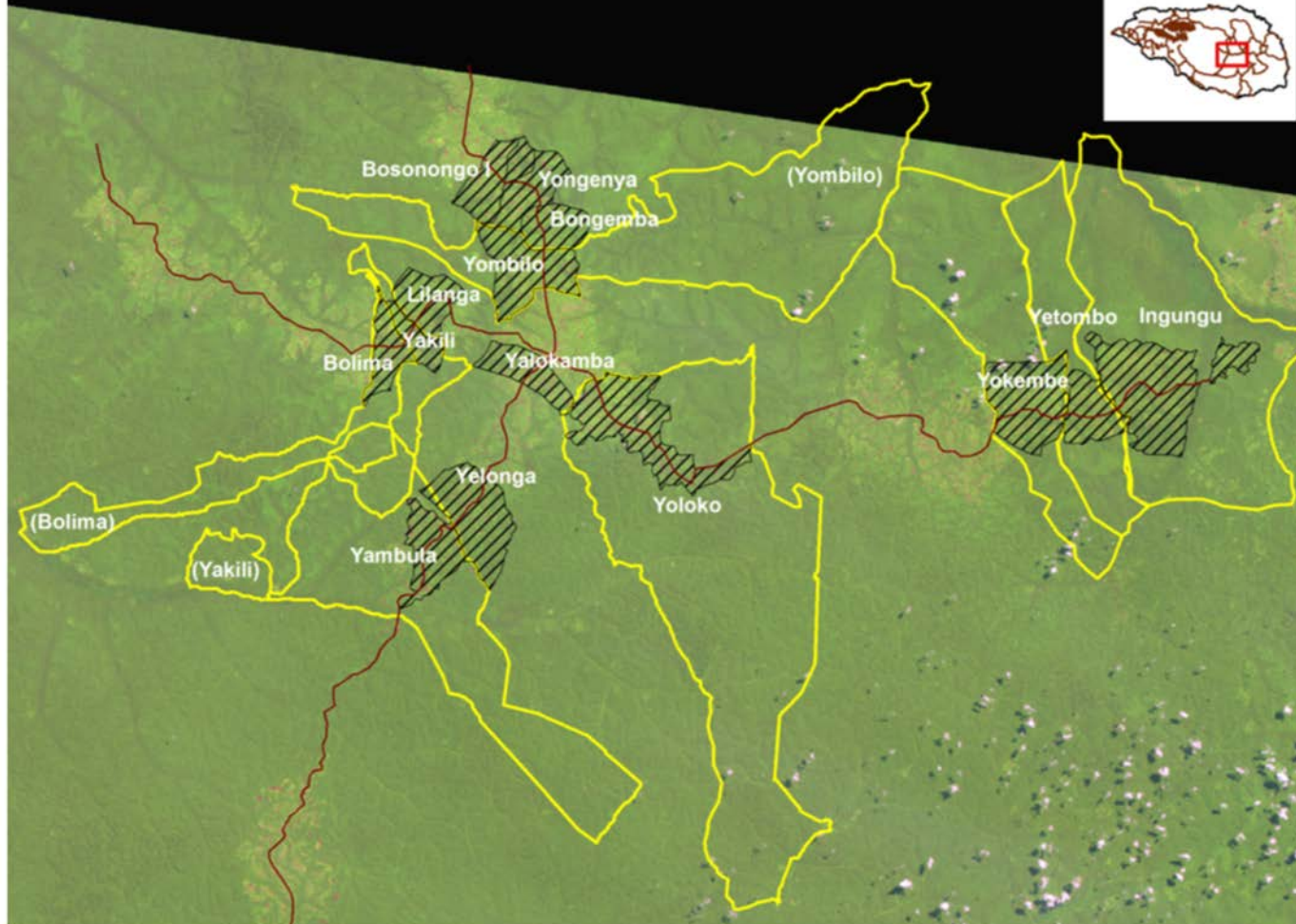


# Participatory Delineation of Micro-Zone Boundaries

## Permanent Forest Zoning



Lingomo and Yelota Groupements:  
Status of permanent- and non-permanent forest micro-zoning, June 2012

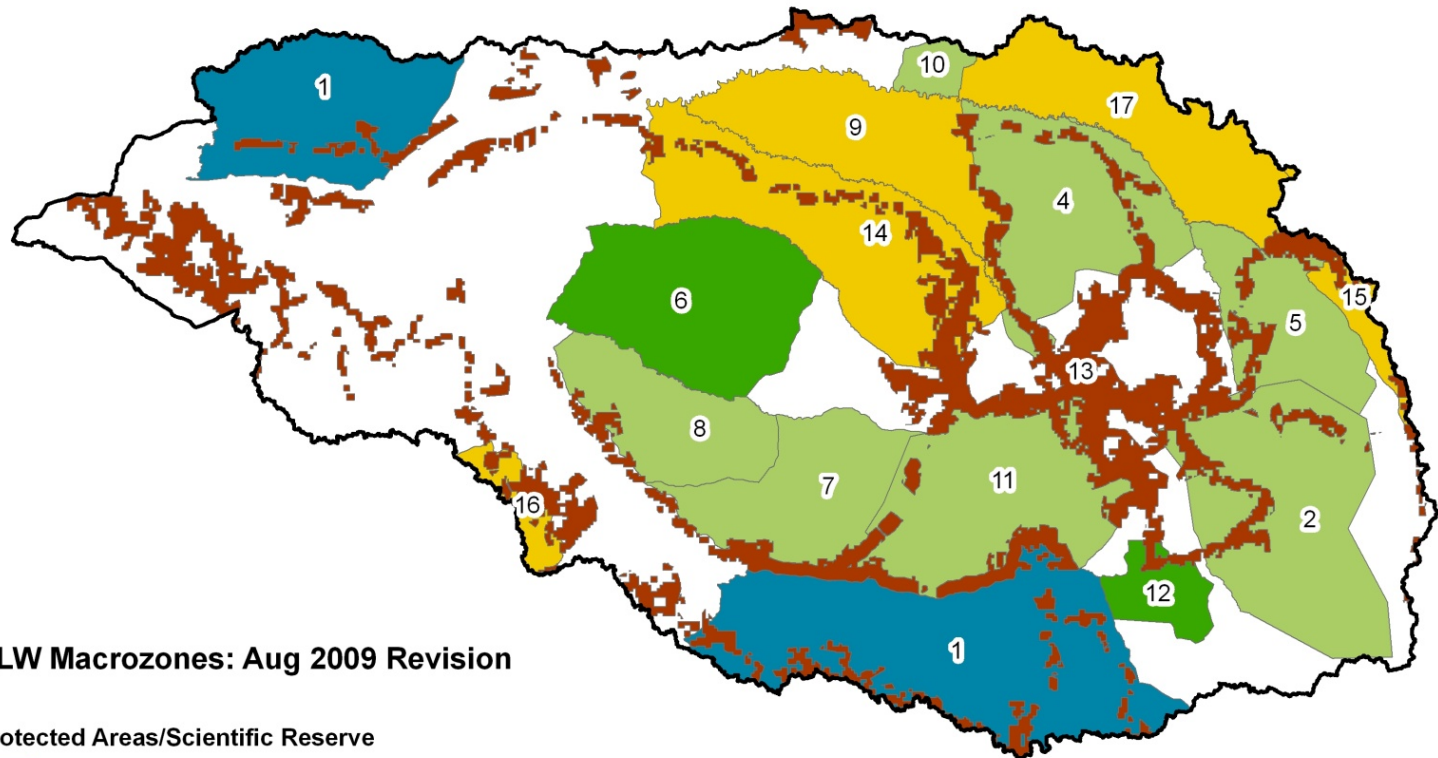


-  Zone Non-Permanent Forest (Zone Agricole)
-  Zone Permanent Forest (Zone Foret Permanente)

Background image: 2009 Landsat 5 TM satellite image (30 meters).





# Zonage indicatif



## MLW Macrozones: Aug 2009 Revision

### Protected Areas/Scientific Reserve

-  Lomako Faunal Reserve (6)
-  Extension- Luo Scientific Reserve (12)








### Agricultural Zone

-  Sylvo-Agro Pastoral (13)

### Humid Zone

-  Wetlands (1)

### Community Forests

-  Cadjobe CBNRMA (11)
-  Corridor CBNRMA (7)
-  Kokolopori (2)
-  Lomako CBNRMA (8)
-  Lopori Congo area (10)
-  Yahuma area (5)
-  Yala CBNRMA (4)

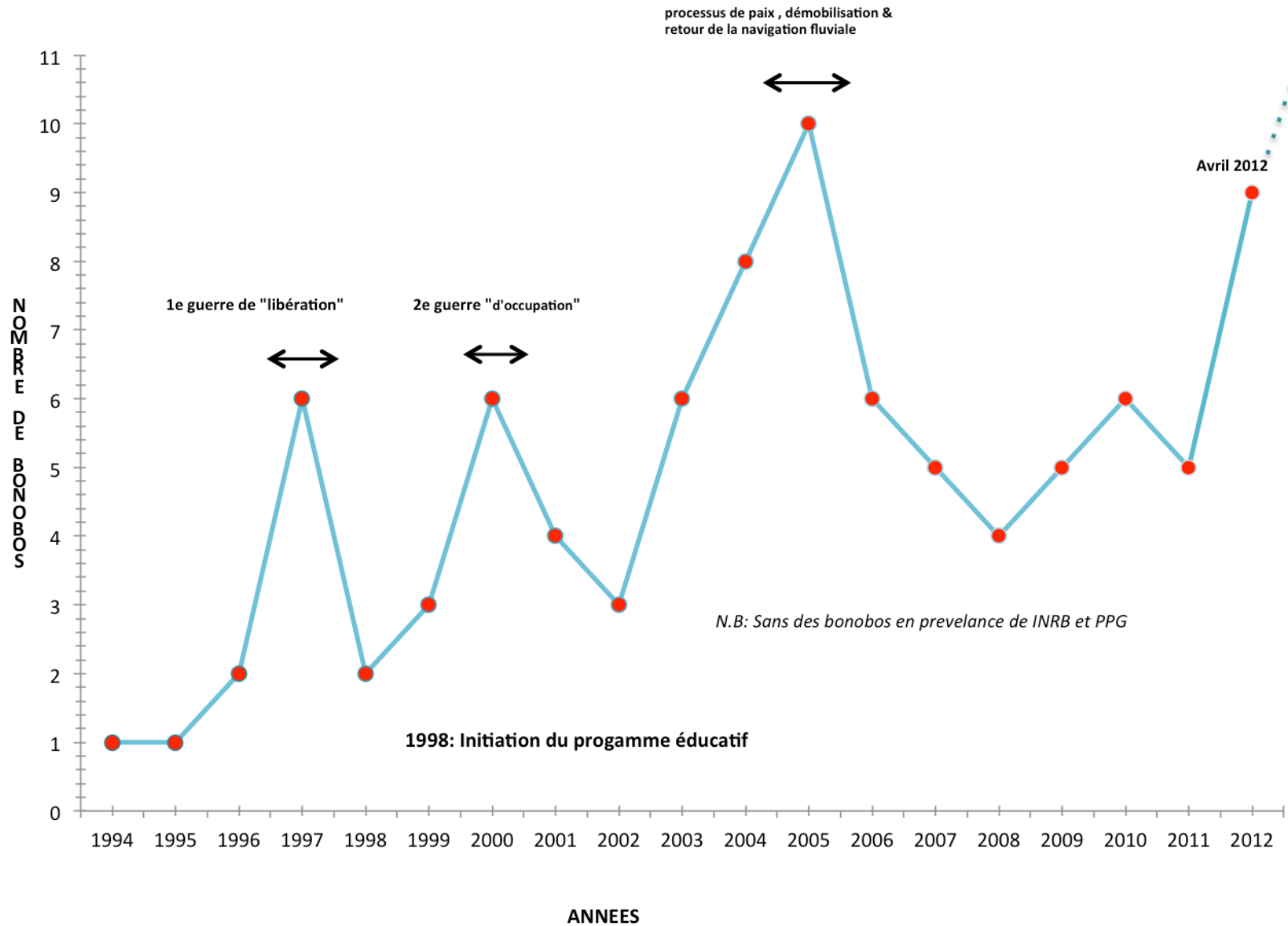
### Logging Concessions

-  CFT (15)
-  SEDAF (17)
-  SIFORCO K7 (14)
-  SIFORCO K2 (9)
-  SOFORMA (16)





Bushmeat Trade





  
UNEP

  
INTERPOL

A RAPID RESPONSE ASSESSMENT

# THE LAST STAND OF THE GORILLA

ENVIRONMENTAL CRIME AND CONFLICT IN THE CONGO BASIN







## THE CAIRO CONNECTION PART II

– APE TRAFFICKING –



Enforcement missions by CITES  
Part of the solution or part of the problem?

Karl Ammann & Pax Animalis

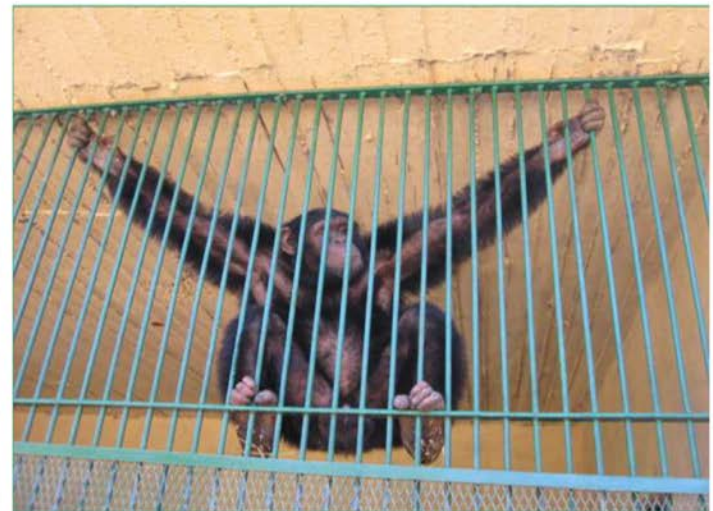
August 2011

## The Cairo Connection Part III

– Update on ape trafficking in and out of Egypt –

&

– The Guinea Ape Saga –



Karl Ammann & Pax Animalis

July 2012



**LAGA**  
Wildlife  
Law  
Enforcement



**PLAN D'ACTION SOUS-REGIONAL DES PAYS DE  
L'ESPACE COMIFAC POUR LE RENFORCEMENT DE  
L'APPLICATION DES LEGISLATIONS NATIONALES SUR  
LA FAUNE SAUVAGE(PAPECALF) 2012-2017**

Secrétariat Exécutif de la COMIFAC

# Gov't to prosecute 'blood' ivory traders

DENR: Priest should prove icons legally acquired



Top row: DENR officials inspect the collection of religious icons owned by Fr. Anthony C. Carvajal. Bottom row: DENR officials inspect the collection of religious icons owned by Fr. Anthony C. Carvajal.

Ex-Meneo head quits PLDT; Black stays

**By Paul G. Mendoza and Jordan W. Page**

**Ex-Meneo head quits PLDT; Black stays**

PLDT Chairman Manuel V. Pangalanan Jr. has announced his resignation from the telecommunications giant, effective Oct. 26, 2011. Pangalanan, who has led PLDT since 2008, will be replaced by former PLDT president and current PLDT chairman Manuel V. Pangalanan Jr. Pangalanan's resignation comes after a series of controversies surrounding the company's operations and financial performance.

**Inve me to your anniversary, P/Noy tells 'scarred' gov't agencies**

**By Nancy C. Carvajal**

President Benigno Aquino III has urged government agencies to celebrate their 50th anniversary by inviting the public to share their stories and experiences. He said that the government should be more open and transparent in its operations.

**Body not found but 58th victim recognized**

**By Jessica M. Alvarez**

The Philippine National Police (PNP) has announced that it has recognized the 58th victim of the Marikina City train crash. The victim was identified as a 35-year-old man who was traveling with his family.

**NEWS**  
**Ex-Media head Neri refuses to testify vs GMA/ A2**  
**SC stops showing of anti-Sides video/ A2**

**BUSINESS**  
**S&P raises growth forecast for PH/ B1**

**ENTERTAINMENT**  
**Hit and misses at the Emmys/ E1**

Monignor proud of 'matchless' collection

By Nancy C. Carvajal

Monignor is proud of his collection of religious icons, which he says is a "matchless" collection. He has spent years collecting these icons from various parts of the world.

Monignor is proud of his collection of religious icons, which he says is a "matchless" collection. He has spent years collecting these icons from various parts of the world.

Monignor is proud of his collection of religious icons, which he says is a "matchless" collection. He has spent years collecting these icons from various parts of the world.

Monignor is proud of his collection of religious icons, which he says is a "matchless" collection. He has spent years collecting these icons from various parts of the world.

Monignor is proud of his collection of religious icons, which he says is a "matchless" collection. He has spent years collecting these icons from various parts of the world.

Monignor is proud of his collection of religious icons, which he says is a "matchless" collection. He has spent years collecting these icons from various parts of the world.

Monignor is proud of his collection of religious icons, which he says is a "matchless" collection. He has spent years collecting these icons from various parts of the world.

Monignor is proud of his collection of religious icons, which he says is a "matchless" collection. He has spent years collecting these icons from various parts of the world.

Monignor is proud of his collection of religious icons, which he says is a "matchless" collection. He has spent years collecting these icons from various parts of the world.

Monignor is proud of his collection of religious icons, which he says is a "matchless" collection. He has spent years collecting these icons from various parts of the world.

Monignor is proud of his collection of religious icons, which he says is a "matchless" collection. He has spent years collecting these icons from various parts of the world.

help protect Namibia's rhinos  
 report any suspicious activity  
 that threatens the safety of our natural heritage



send an alert via sms  
 55555  
 toll-free

WIN STUNNING TRAVEL PRIZES WORTH MORE THAN R200 000

Going places, doing things in Africa

# Getaway

THE REAL BATTLE OF KRUGER

## Rhino poaching

Everything you want to know...  
 and a bunch of stuff you don't



Visit iSimangaliso  
 • Kosi Bay • Cape Vidal • Sodwana • St Lucia

MOZAMBIQUE GUIDE TO PONTA DO GURU  
 FORGOTTEN TOWNS DEAT THE DOLLS RUMORS & DISCOVER LIMPOPO  
 NAMIBIA BE WITH THE CROWDS

REVENING-RO | NERPS SECRET CAVES | MEXICAN REEF

# NATIONAL GEOGRAPHIC

Investigative Report

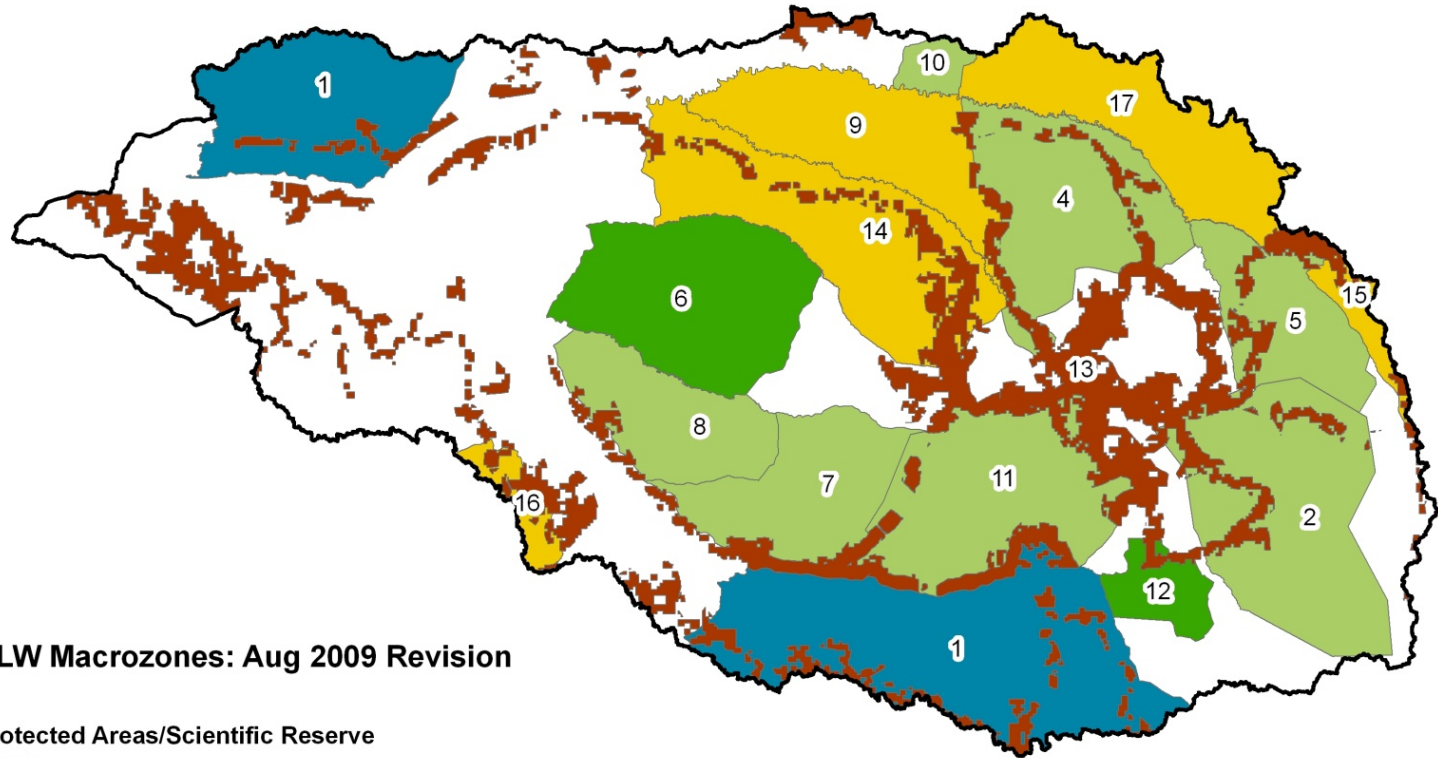
## Blood Ivory

25,000 ELEPHANTS WERE KILLED LAST YEAR





# Zonage indicatif



## MLW Macrozones: Aug 2009 Revision

### Protected Areas/Scientific Reserve

- Lomako Faunal Reserve (6)
- Extension- Luo Scientific Reserve (12)

### Agricultural Zone

- Sylvo-Agro Pastoral (13)

### Humid Zone

- Wetlands (1)

### Community Forests

- Cadjobe CBNRMA (11)
- Corridor CBNRMA (7)
- Kokolopori (2)
- Lomako CBNRMA (8)
- Lopori Congo area (10)
- Yahuma area (5)
- Yala CBNRMA (4)

### Logging Concessions

- CFT (15)
- SEDAF (17)
- SIFORCO K7 (14)
- SIFORCO K2 (9)
- SOFORMA (16)

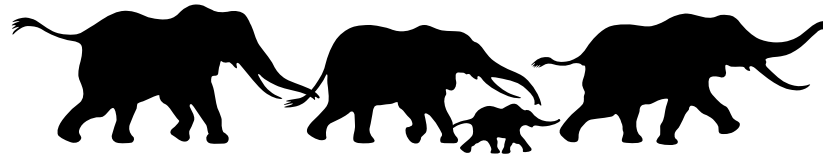
# Maringa Lopori Wamba landscape



## Pilot zone for land use planning and for complete stop of any bonobo and forest elephant hunting

1. Continue developing Land Use Plans: upscale micro zoning and create best network of interconnected PA's;
2. Continue supporting the ICCN for improved management of the PA's.
3. Focus on full protection and achieve “zero tolerance” with regard to killing of great apes and elephant throughout the landscape (MECNT). First focus will be on the populations at large and medium sized villages.
  - a. Train representatives of MECNT and implement control at markets and amongst hunter. Assure prosecution if needed.
  - b. Raise awareness (through radio, schools,...) in the same villages to inform and educate people on the ongoing the ongoing control and eventual prosecutions. Focus will be on the need to respect laws and regulations when it comes to endangered species, but equally e.g. on risk when it comes to trade and consumption of great ape pets and meat.
4. Develop partnership with like minded programs.
5. Contribute to efforts to include the African Apes in campaigns and law enforcement initiatives in the region.

Thank You



AFRICAN WILDLIFE FOUNDATION®