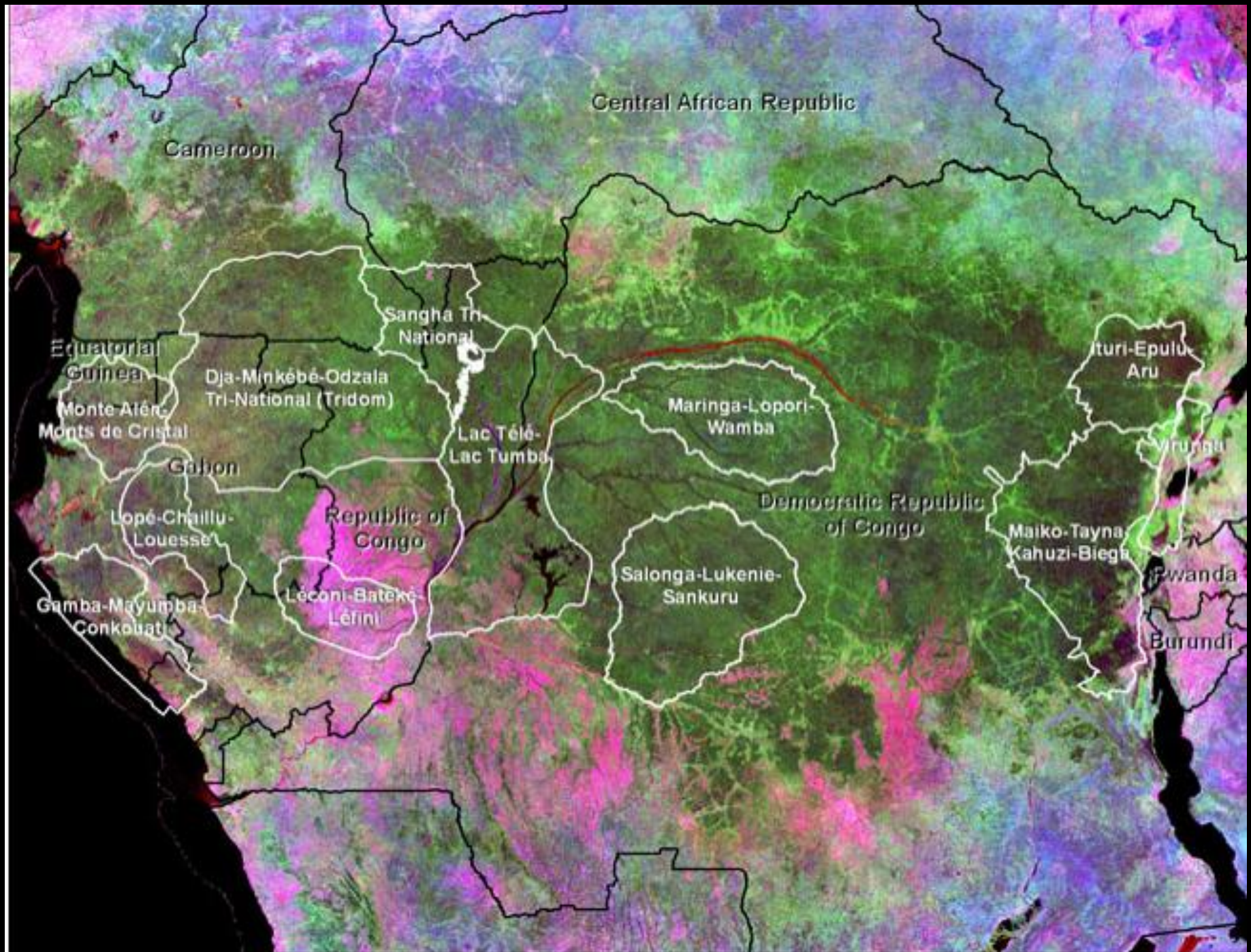


# Participatory Land Use Planning and Food Security in the Ituri Forest Conservation Landscape, DRC

ABCG Brown Bag  
Food Security and Conservation  
15 September 2011



Michael Painter  
Wildlife Conservation Society



# Ituri Forest Landscape

- 40,862 km<sup>2</sup> in northeastern DRC
- 300,000 people
- High biodiversity area for Central Africa
  - Largest remaining population of okapi
  - Forest elephants
  - 17 species of primates
  - 10 species of forest antelope
  - Forest buffalo
  - 300 bird species



# Agricultural expansion





# Poaching and unsustainable hunting



# Land management challenges



- Population growth
  - Immigrants attracted by road repair
  - Perceived land abundances
- Indiscriminate land grants and sales by chiefs
- Social and institutional conflicts



# Zoning Goals

- Meet the present and future needs of population (farmers and hunter-gatherers)
- Secure prior and legitimate land and resource access and use claims of OFR residents
- Reconcile land use interests of different stakeholders
- Construct shared vision and institutional mechanisms for landscape management



# Ituri Landscape

## Landuse Planning Progress

### Agglomerations

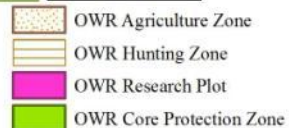


### ICCN

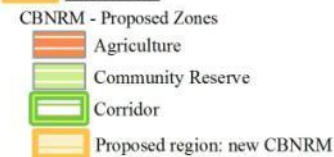


### Ituri Landscape Limits

### Protected Areas



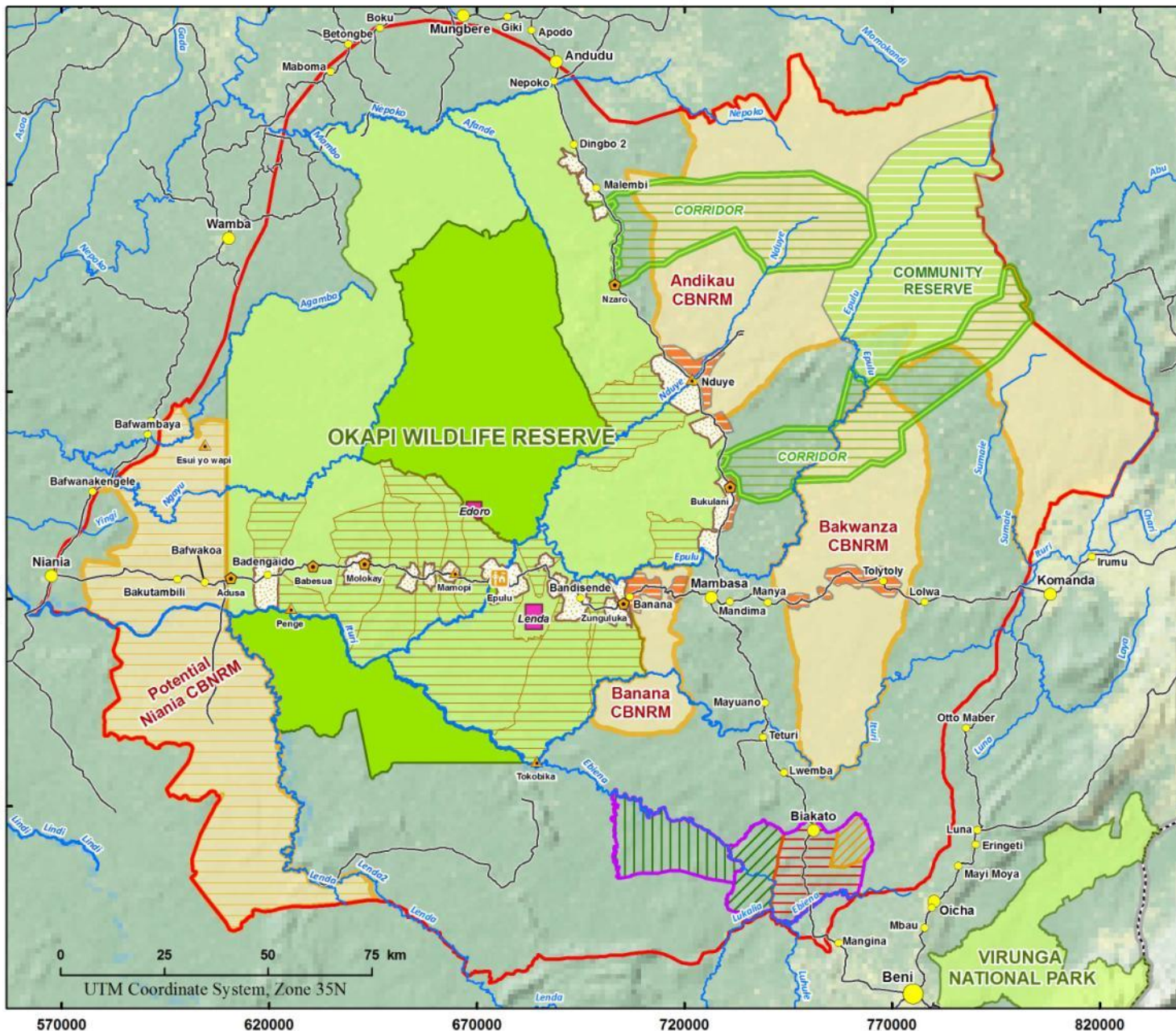
### CBNRMs



### ERZ - ENRA Concession



### Current LS Map - May 2010





# Zoning in OWR

- Began in 2000
- 65% of the OWF is available for human subsistence activities
- 10% for agriculture
- 55% for forest multi-use zones (hunting, gathering)
- 35% core conservation zone



# Issues to be Resolved in OWR



- Snares
- Perennial crops
- Rights to felled trees





# Two CBNRMs – Bakwanza and Andikau

- Agriculture
- Hunting
- Forestry
- Community Reserve
  - Adjoin one another and will be managed jointly
  - Forest elephant migration corridor



# Issues to be Addressed

- Buy-in from chiefs
- Institutional capacity to manage
  - Within individual CBNRMs
  - Across jurisdictions
- Landscape management
- Economic incentives/livelihood options
  - Marketing
  - Financial services





# Next Steps for ABCG and Members

- Best practices improving farm production sustainably
- Indicators of resilience and sustainability
- Horizontal exchanges among farmers/farmer-led innovation



Thank you.

