

Building Resilience for Wildlife and Livelihoods in Kenya



Conservancies: “Milking the Elephant”





USAID
FROM THE AMERICAN PEOPLE

Biodiversity Analysis and Technical Support (BATS) program

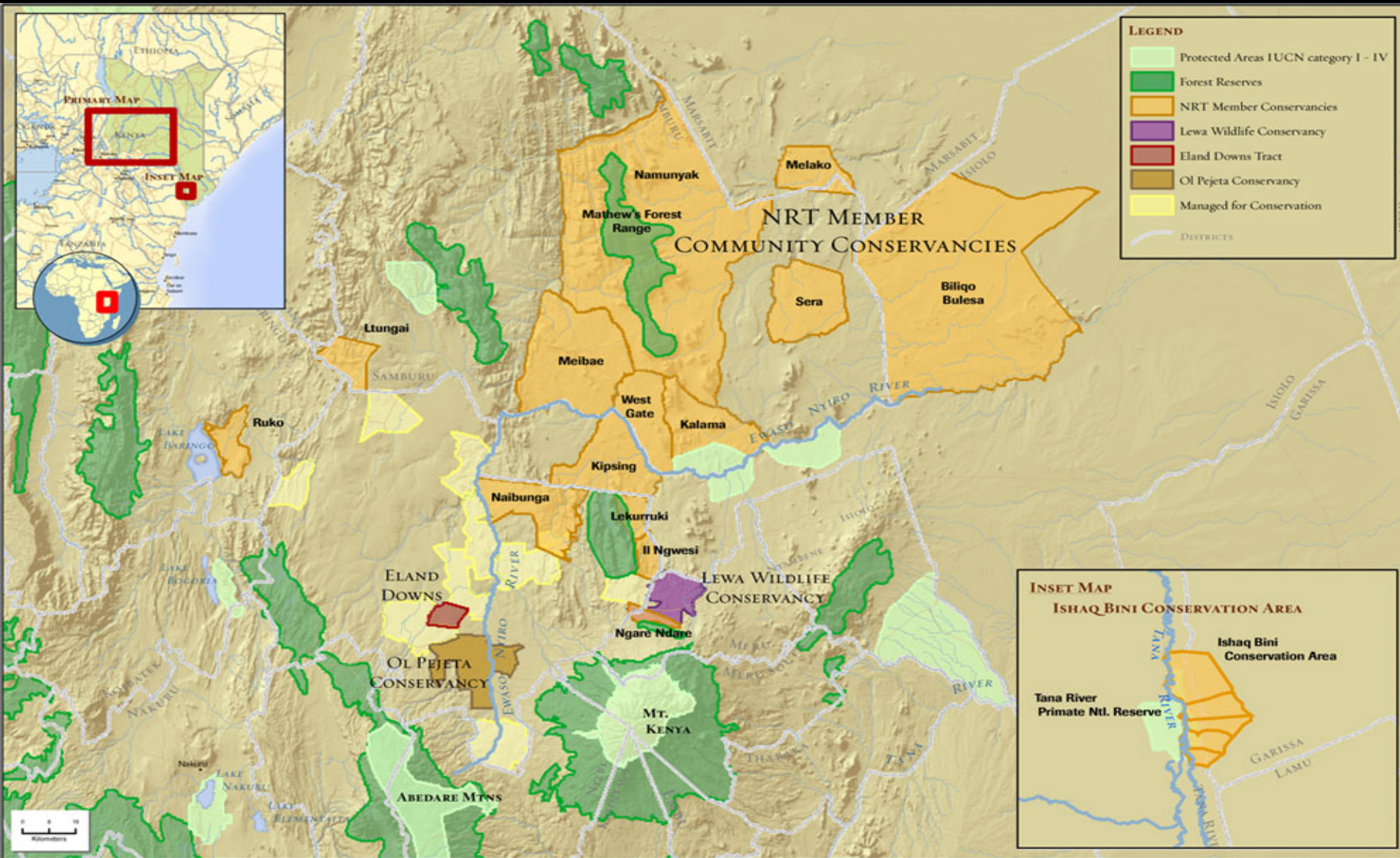
AFRICA BIODIVERSITY COLLABORATIVE GROUP



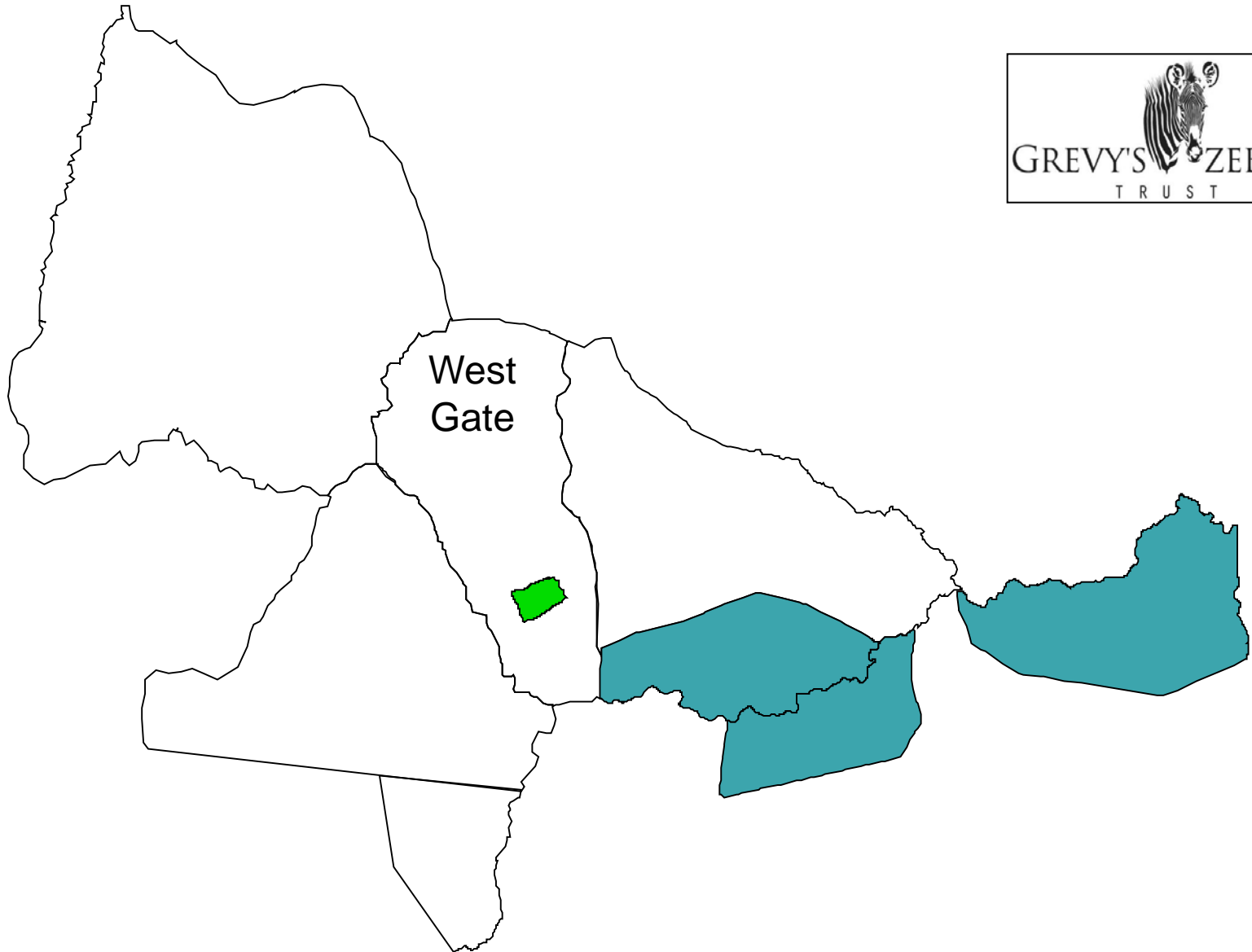
ABCG Project: Grazing Management

Goal: To better understand how *holistic planned grazing* can be rolled out across multiple *community conservancies*; and to determine the extent of *rangeland improvement* and soil carbon sequestration.

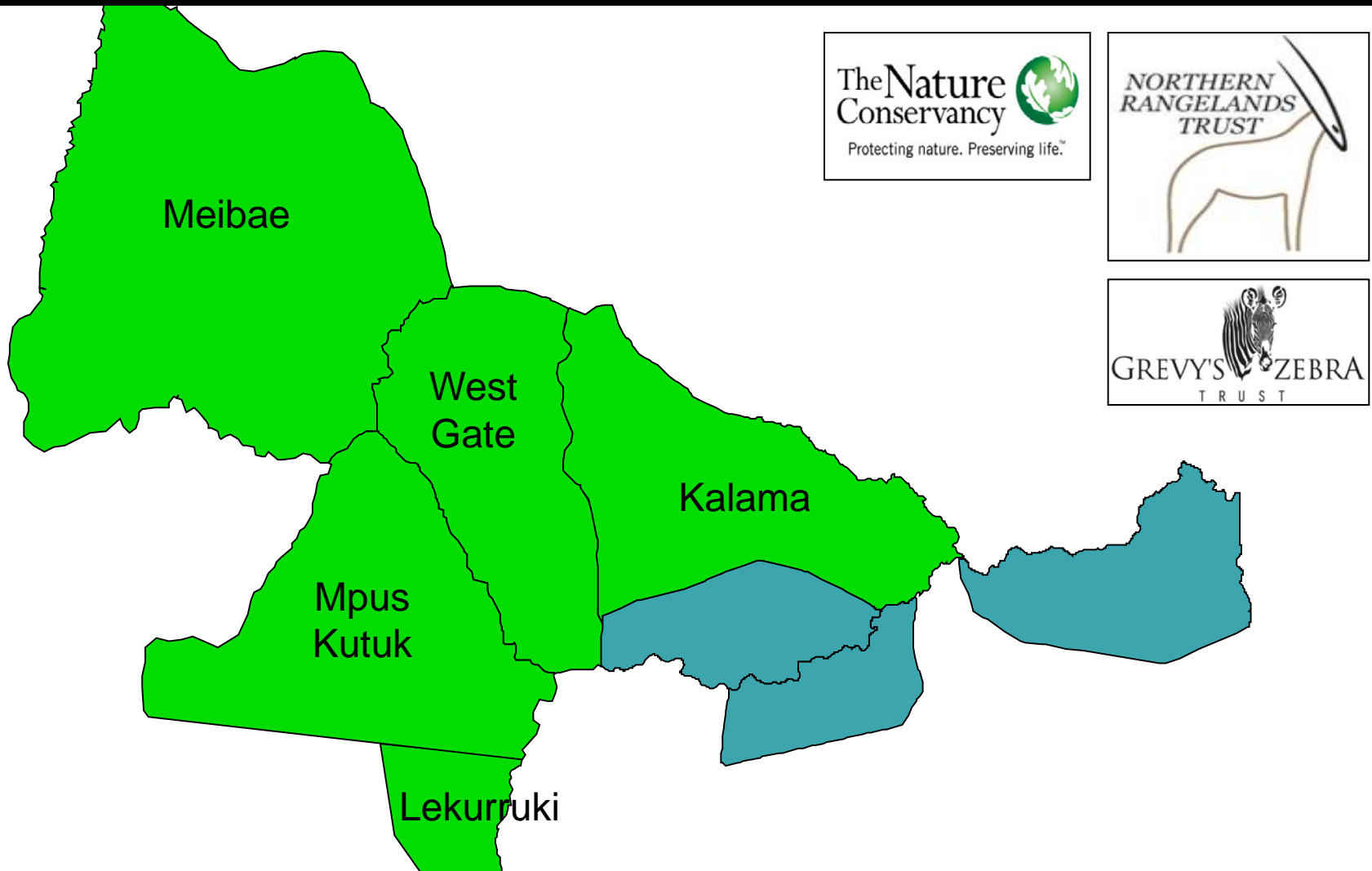
Project Area: NRT Conservancies



Westgate Community Conservancy



5 Community Wildlife Conservancies



255,062 Hectares / 26,200 People



Acacia Savanna



Outputs from ABCG Grant to Date



Building Capacity: 5 Conservancies TOT

Outputs from ABCG Grant to Date



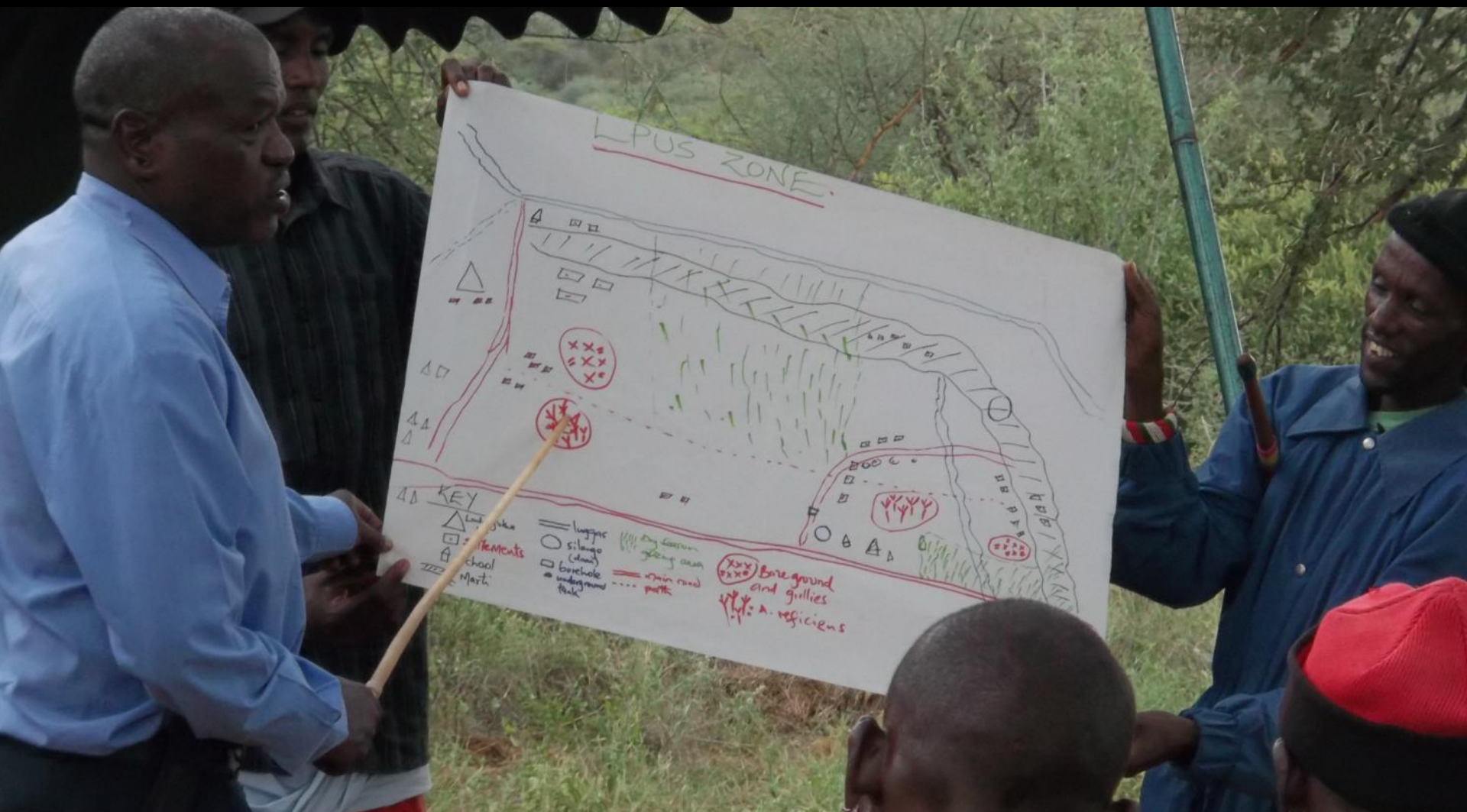
5 Trained Grazing Coordinators With
Logistical and Technical Support

Outputs from ABCG Grant to Date



324+ People Participated In Holistic Planned Grazing

Outputs from ABCG Grant to Date



71,419 Hectares Dry Season Planning

Outputs from ABCG Grant to Date

Area and Population Served

Total Area (hectares)	Total Pop	Conservancy	Hectares Under Grazing Plan	Participants
40,548	3,500	Westgate	6,925	58
46,371	6,000	Kalama	15,915	58
11,952	3,700	Lekurruki	8,885	38
52,594	3,000	Mpus Putuk	4,678	90
103,597	10,000	Meibae	35,016	92
255,062	26,200	Total	71,419	324



Overview of Holistic Grazing Planning



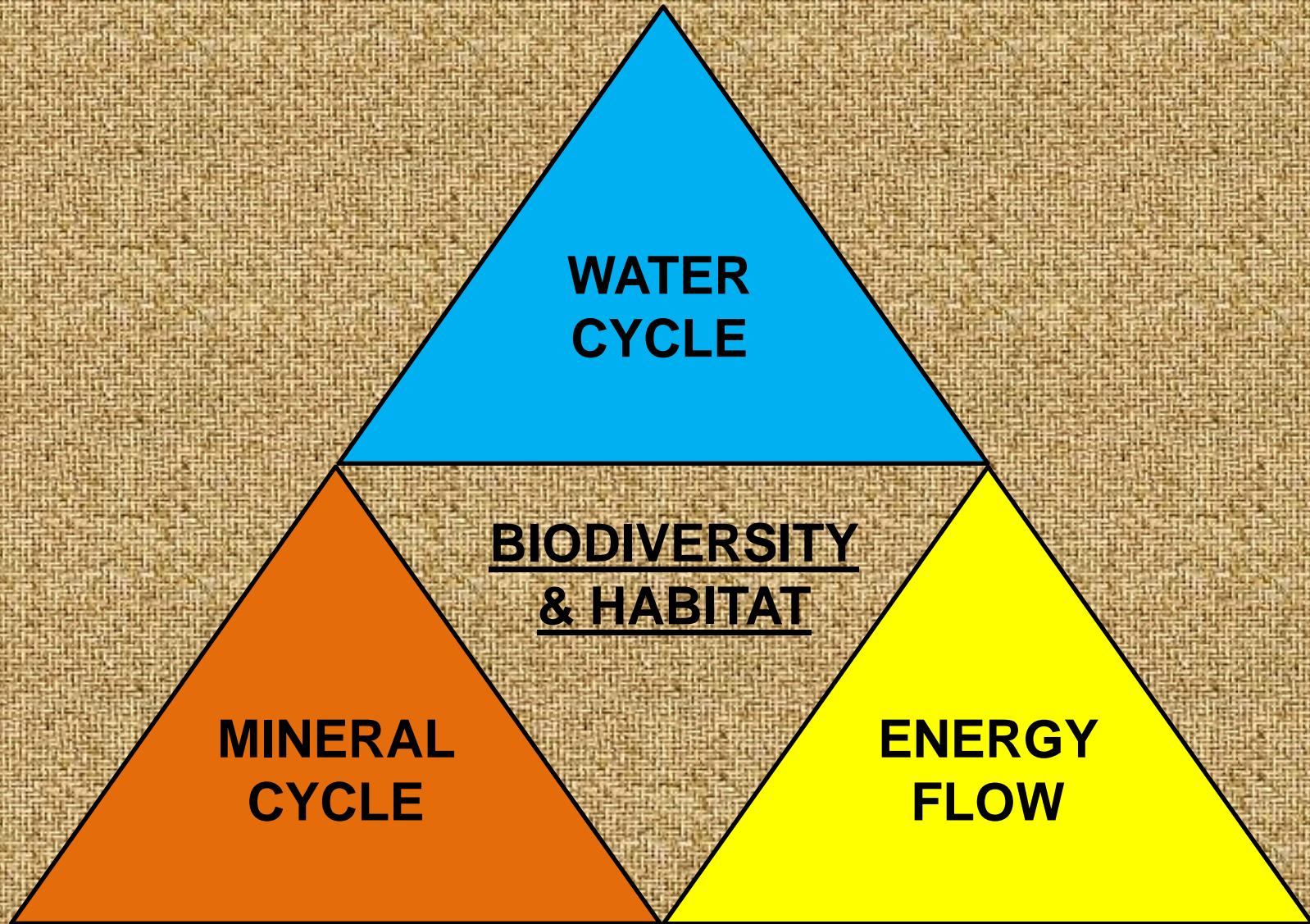
How Do You Plan Grazing Holistically?



Direction: Describing Collective Vision



Manage the Ecosystem Processes



Demonstrating Water Cycle



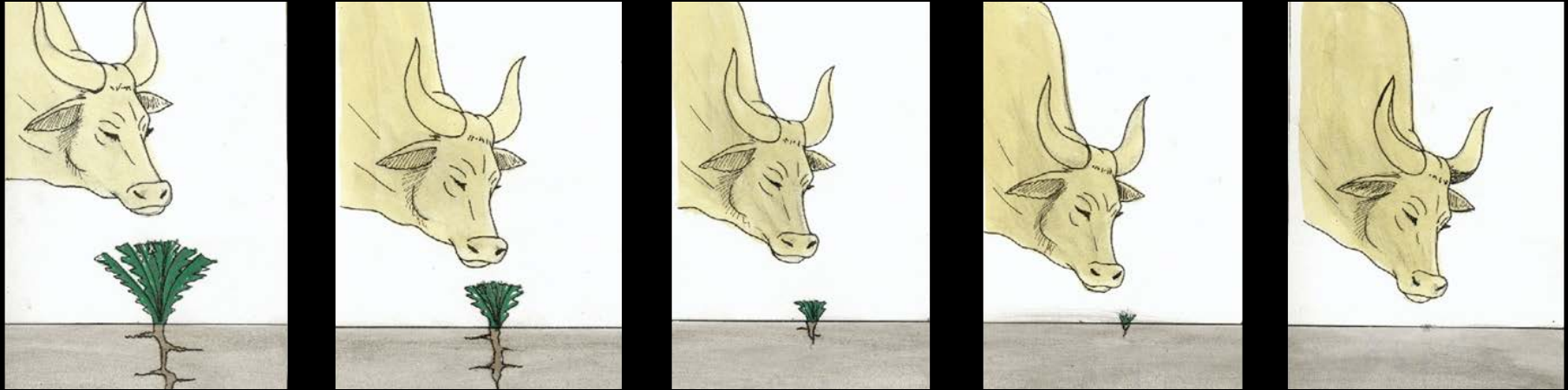
Demonstrating Energy Flow



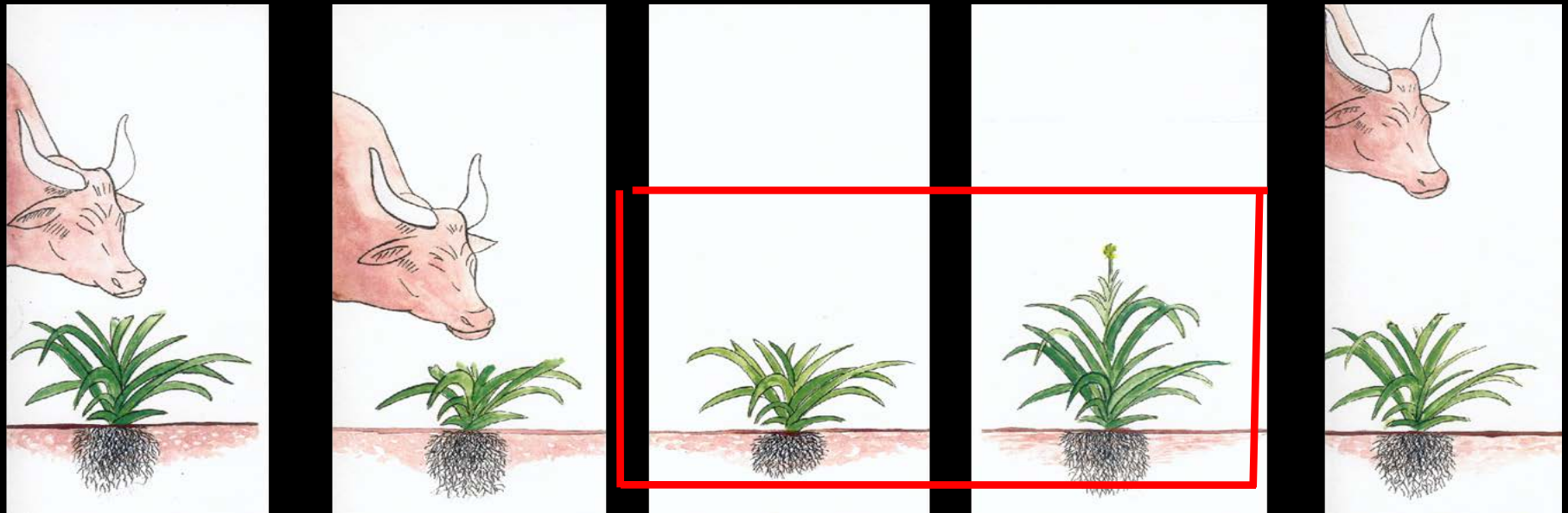
Demonstrating Biodiversity & Resilience



Tools: Proper Grazing



Time – Not Numbers of Animals





Tools: Animal Impact > Bunching & Bomas



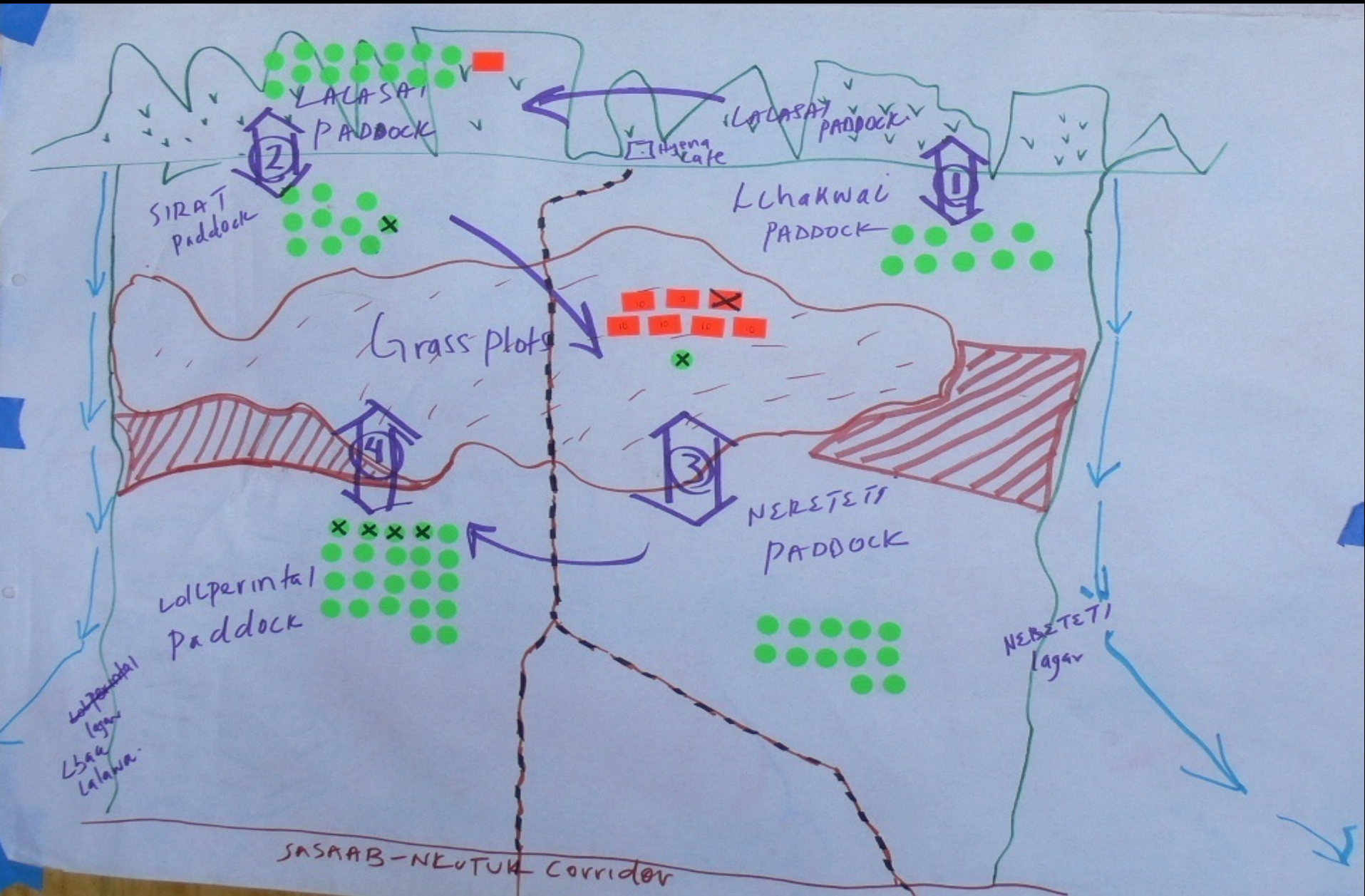
Assessing Forage



Mapping Grazing Blocks in a Zone



Final Grazing Map



Planned Grazing Herd



Extras: NRT Cattle Purchases



10,200,000 Kenya Shillings

Resilience: Strengthening Connections



*“We shall never speak of drought or rainfall
again because that is what we cannot control.
We shall start planning for what we can control.”*

- a community elder

Boma on Severely Degraded Site



Herd just left

Boma Site After Rains



Establishment and Growth of Forage

Integrating Management of Interventions



Clearing & Seeding Site

Maintained through Planned Grazing



Managed Grass Seeding Site



