



ENGAGING STAKEHOLDERS TO MAINSTREAM LAND USE PLANNING IN AFRICA FOR SUSTAINABLE DEVELOPMENT

Williams, David¹, Hedley Grantham², Kendall Jones², Bruno Rajaspera³, Gautam Surya², Anne Trainor⁴, Ayesha Tulloch⁵

1. African Wildlife Foundation, 2. Wildlife Conservation Society, 3. Conservation International, 4. The Nature Conservancy, 5. University of Sydney



INTRODUCTION

Over the last decade, NGO partners in the [Africa Biodiversity Collaborative Group](#) (ABCG) applied a common land use planning (LUP) framework in sites across Africa. The framework emphasized spatial scenarios that minimized conflict between land uses while considering ecosystem services and conservation. With Africa's rapid development increasing the need for LUP, ABCG created and implemented a course to help enable key stakeholders to apply the framework.

ABCG LAND USE PLANNING COURSE

Designed for African governments, NGOs, and other stakeholders, the training course introduces the theory and starting points of integrating conservation into LUP. The course features 12 modules with exercises ranging from LUP principles to climate considerations. As Covid-19 derailed plans to hold in-person trainings, we pivoted to online and hybrid (remotely connected in-person) formats in Madagascar, Gabon,

Republic of Congo and Tanzania.

Participation of vulnerable groups like women emerged as a significant challenges in initial LUP processes. Course design and rollout aimed to mainstream gender participation. Women comprised 35% and 55% of participants in the Madagascar and Tanzania courses respectively. Government stakeholders dominated both (Fig. 2).

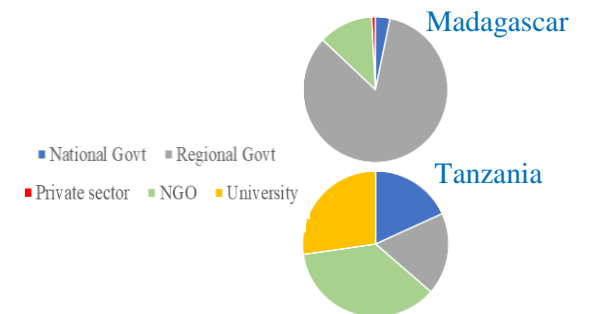


Figure 2: ABCG Course Stakeholder Group Distribution

ABCG LAND USE PLANNING PROCESS

The ABCG LUP process centers on a structured decision-making cycle for exploring potential land use strategies and scenarios towards conservation-compatible recommendations. The SDM cycle (Fig. 1) caters to a careful and organized analysis of natural resource management decisions. Since 2012, ABCG applied versions of it at eight sites at landscape to national scales. Several sites demonstrated significant LUP implementation.

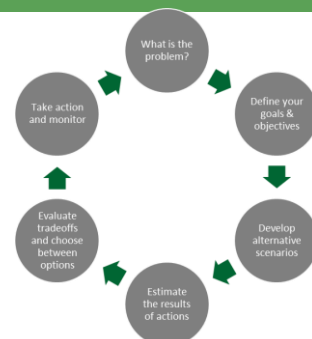


Figure 1: ABCG Structured Decision Making for land use planning

TRAINING IMPACT AND NEXT STEPS

ABCG aims to expand access to the course by refining the “packaging” (e.g., more voice-ove with presentations, video demonstrations of exercises) to streamline delivery.

- [View or download](#) the course
- [Participant testimonial](#)
- Contacts: dwilliams@awf.org; abcg.org

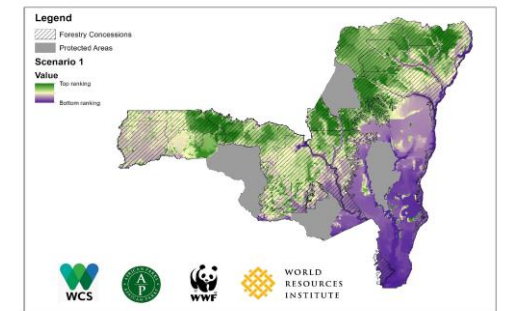


Figure 3: Rep of Congo scenario to identify forestry set-asides for carbon